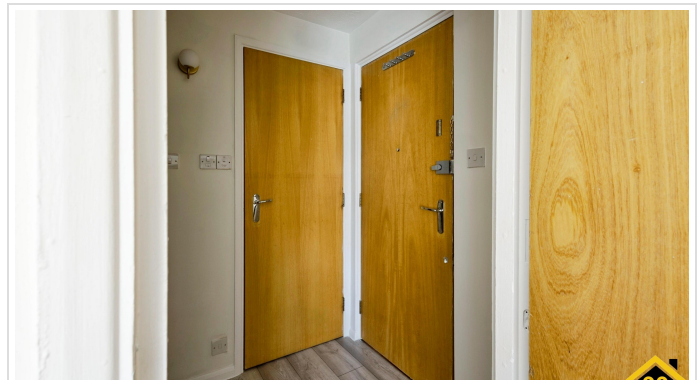




99Home Ltd.
99Home Ltd,
Sutton Business Centre,
Restmor Way,
Wallington,
SM6 7AH,
Phone :0203 5000 999
Email
:info@99home.co.uk

1 Bed Studio In Pasteur Close , London, NW9 5HQ

£1,450 Monthly





SHORT DESCRIPTION

Property Ref: 10160 We are pleased to present an exceptional studio completely refurbished located at 9 Pasteur Close, London, NW9. This wonderful residence boasts 1 bedroom-living room with separate bathroom, offering ample space for comfortable living. It features a fully-fitted kitchen, ideal for culinary enthusiasts, along with the convenience of allocated parking. Positioned in a prime location, this property offers easy access to a range of local amenities and public transportation, (1 minute walk from Colindale tube station) ensuring convenience for residents. This residence embodies the perfect blend of comfort, convenience, and quality living, making it an ideal choice for a discerning individual or couple. Property Type: Full Renting price: £1450.00 Pricing Options: Fixed Price Tenure: 12 months Council tax band: B EPC rating: E Measurement: 312.153 sq.ft. Outside Space: Communal Garden Parking: Allocated Heating Type: Electric Heating

1

Bed Room(s)

1

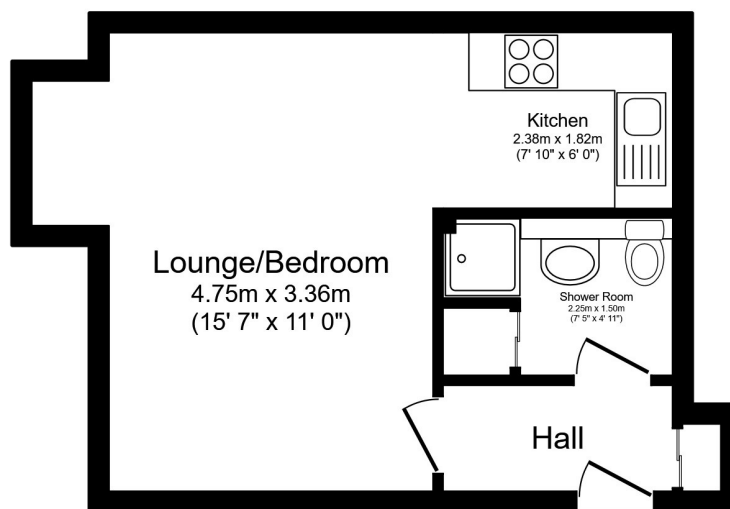
Bath Room(s)

0

Living Room(s)

FLOOR PLAN

Illustrations are for identification purposes only and are not to scale. All measurements are a maximum and include wardrobes and bay windows where applicable.



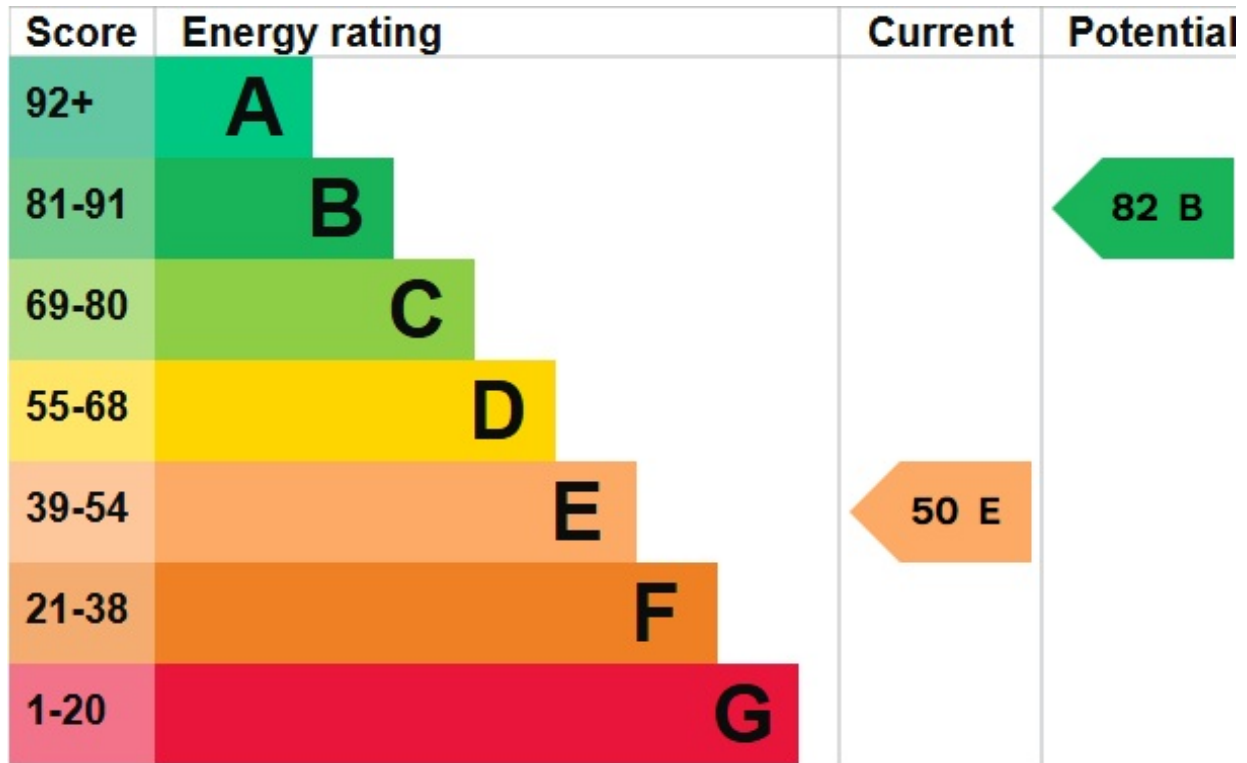
Floor Plan

Total floor area 29.3 sq.m. (315 sq.ft.) approx

This floor plan is for illustrative purposes only. It is not drawn to scale. Any measurements, floor areas (including any total floor area), openings and orientation are approximate. No details are guaranteed, they cannot be relied upon for any purpose and they do not form part of any agreement. No liability is taken for any error, omission or misstatement. A party must rely upon its own inspection(s). Powered by www.focalagent.com

EPC GRAPH

Illustrations are for identification purposes only and are not to scale.
All measurements are a maximum and include wardrobes and bay windows where applicable.



Disclaimer: The information displayed about this property comprises a property advertisement. 99home.co.uk (<http://www.99home.co.uk/>) will not make no warranty for the accuracy or completeness of the advertisement or any linked or associated information, and 99home has no control over the content. This property advertisement does not constitute property particulars, the property may offer to tenants in same condition as they have seen on time of the viewing. The information is provided and maintained by 99home.co.uk (<http://www.99home.co.uk/>)

Company registration number in England : 10469887 VAT: 263 3023 36
Copyright © 99Home Limited 2017. All rights reserved.