

1 Bed Flat In Saxon Court 5 York Way, London, N1C 4AN

£150,000





SHORT DESCRIPTION

Property Ref: 11916 ****Property Description:** 1 Bedroom Flat at Flat, Saxon Court, 5 York Way, London, N1C****** ***Discover Your Urban Oasis*** Welcome to Saxon Court, a sophisticated and contemporary residential development nestled in the heart of London's vibrant urban landscape. Offering an exceptional 1-bedroom flat, Flat presents an extraordinary opportunity to experience luxurious city living at its finest. ****Key Features:**** - ****Stylish Interiors:**** As you step into the Flat, you are greeted by a modern and thoughtfully designed interior that exudes elegance and comfort. The living area is a perfect blend of chic aesthetics and functionality, creating an inviting space for relaxation and entertainment. - ****Abundant Natural Light:**** Large windows in the living room and bedroom flood the apartment with natural light, creating a bright and airy atmosphere throughout the day. The interplay of light and space enhances the overall ambiance, making it a tranquil retreat from the bustling city. - ****Sleek Kitchen:**** The open-plan kitchen boasts contemporary fittings and high-end appliances, providing a seamless cooking experience for the aspiring home chef. The sleek design ensures both efficiency and style, making it a joy to prepare meals and entertain guests. - ****Serene Bedroom:**** The bedroom offers a private sanctuary where you can unwind and recharge. With ample space and a calming ambiance, it serves as a perfect escape from the city's hustle and bustle, promoting restful nights and energizing mornings. - ****Modern Bathroom:**** The well-appointed bathroom features modern fixtures and a relaxing bathtub. Its clean and minimalist design ensures a spa-like experience, adding an extra touch of luxury to your daily routines. - ****Prime Location:**** Situated in the vibrant area of London-N1C, Saxon Court enjoys excellent connectivity to the city's most iconic attractions and business hubs. With King's Cross St. Pancras Station just a stone's throw away, accessing other parts of London and beyond couldn't be more convenient. - ****Amenities:**** Residents of Saxon Court benefit from a range of amenities, including a concierge service, secure entry system, and well-maintained communal areas, elevating your living experience to a new level of convenience and security. - ****Local Delights:**** The neighborhood surrounding Saxon Court offers an array of cultural venues, trendy eateries, and boutique shops. Whether you seek a leisurely stroll along Regent's Canal or wish to explore the cultural gems

of the British Library and The British Museum, this location has it all. ****Experience London Living at Its Best**** Flat, Saxon Court, 5 York Way, London N1C, presents an exceptional opportunity to embrace contemporary city living with style and convenience. With its refined interiors, enviable location, and host of amenities, this 1-bedroom flat promises an unparalleled urban oasis that you can call home. Don't miss your chance to experience the best of London living – schedule a viewing today and let this remarkable property capture your heart...



Bed Room(s)



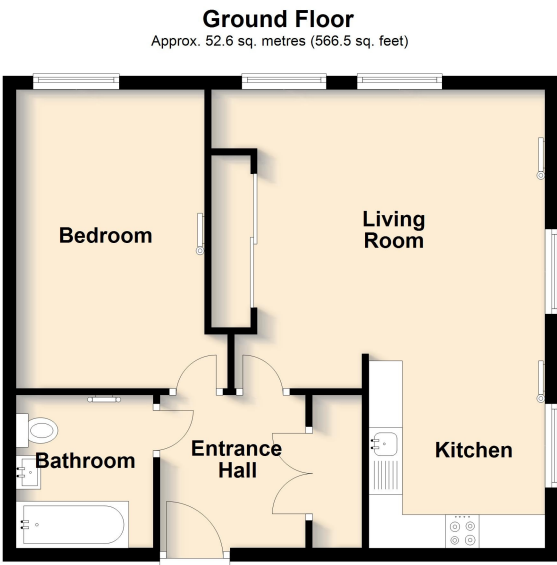
Bath Room(s)



Living Room(s)

FLOOR PLAN

Illustrations are for identification purposes only and are not to scale.
All measurements are a maximum and include wardrobes and bay windows where applicable.



Total area: approx. 52.6 sq. metres (566.5 sq. feet)

Floor Plans are for illustrative purposes only. Measurements and areas shown are approximate. These plans will not show the correct wall thicknesses, especially in older properties. We will aim to provide plans that are accurate and correctly represent the rooms within the property. We do not, however, provide any guarantees, warranty or representation as to the total accuracy and completeness of the floor plan. Anyone relying on the information provided in the property details (and floor plans) should conduct a careful, independent investigation of the property to determine the suitability of the property for their requirements.
Plan produced using PlanUp.

EPC GRAPH

Illustrations are for identification purposes only and are not to scale.
All measurements are a maximum and include wardrobes and bay windows where applicable.

Energy rating and score

This property's current energy rating is C. It has the potential to be C.

[See how to improve this property's energy efficiency.](#)

Score	Energy rating	Current	Potential
92+	A		
81-91	B		
69-80	C	72 C	72 C
55-68	D		
39-54	E		
21-38	F		
1-20	G		

The graph shows this property's current and potential energy rating.

Properties get a rating from A (best) to G (worst) and a score. The better the rating and score, the lower your energy bills are likely to be.

For properties in England and Wales:

the average energy rating is D
the average energy score is 60

Disclaimer: The information displayed about this property comprises a property advertisement. 99home.co.uk (/) will not make no warranty for the accuracy or completeness of the advertisement or any linked or associated information, and 99home has no control over the content. This property advertisement does not constitute property particulars, the property may offer to tenants in same condition as they have seen on time of the viewing. The information is provided and maintained by 99home.co.uk (/)