

2 Bed Detached Bungalow In Eldon Villas 13 Eldon Road, Walthamstow, E17 7BZ

£2,250 Monthly





SHORT DESCRIPTION

Property Ref: 12107 A rare opportunity to rent a detached home within a 5 minute stroll of Walthamstow tube station. This stunning bungalow defines exclusive; Completely hidden away at the back of a fine pair of period London yellow brick semi's with its own outdoor space and independent entrance. Number three Eldon Villas is the only detached house in this development of just four homes which are owned and maintained by the same family. This detached property has been 7 years in the making and is full of reclaimed brickwork and stone to give it the character and charm that most new builds lack. Highlights include vaulted ceilings and skylights to all rooms, stone mullion windows, lacquered raw steel radiators and curtain poles for a modern industrial feel, exposed brick walls and fully tiled victorian style bathrooms. The accommodation comprises : Storm porch with feature lantern Spacious hallway with exposed brick walls throughout, engineered wood floor, and solid oak doors to all rooms. Main shower room accessed from the central hallway is fully tiled and features a spacious walk in wetroom shower. Open plan living kitchen dining area with 3 meter high vaulted ceilings, fitted modern handleless kitchen with high end integrated Siemens appliances and Corian worktops, feature stone window and warehouse style steel patio doors leading to the rear courtyard garden area. There are 2 double bedrooms, the master benefitting from dressing area and ensuite with fully tiled wetroom shower. Externally there is a rear courtyard patio area with central olive tree feature, outdoor lighting and power. Internal floor space approximately 62 square meters. Property Type: Detached Bungalow Full Renting price: £2250.00 Pricing Options: No Status Tenure: 12 months Council tax band: D EPC rating: C Measurement: 645.835 sq.ft. Outside Space: Enclosed Garden Parking: Permit Heating Type: Gas Central Heating -----

2

Bed Room(s)

2

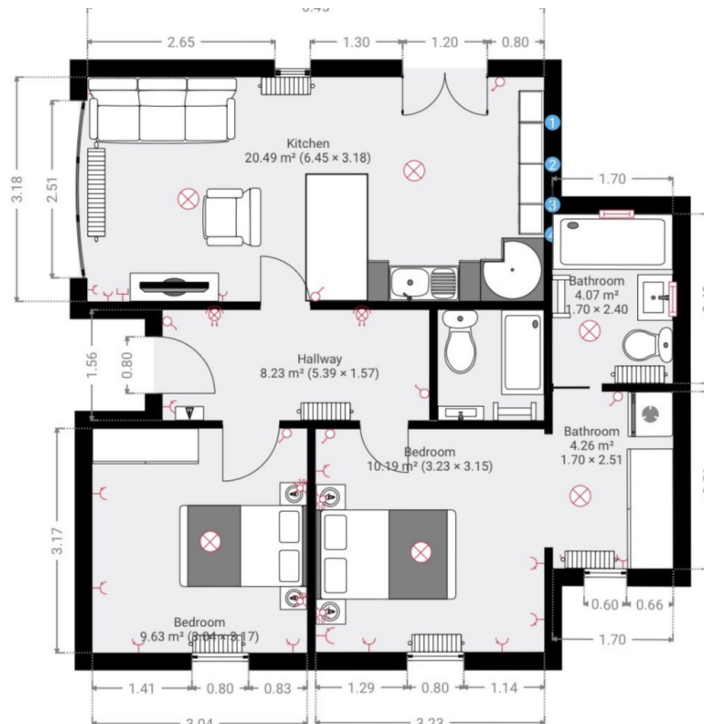
Bath Room(s)

1

Living Room(s)

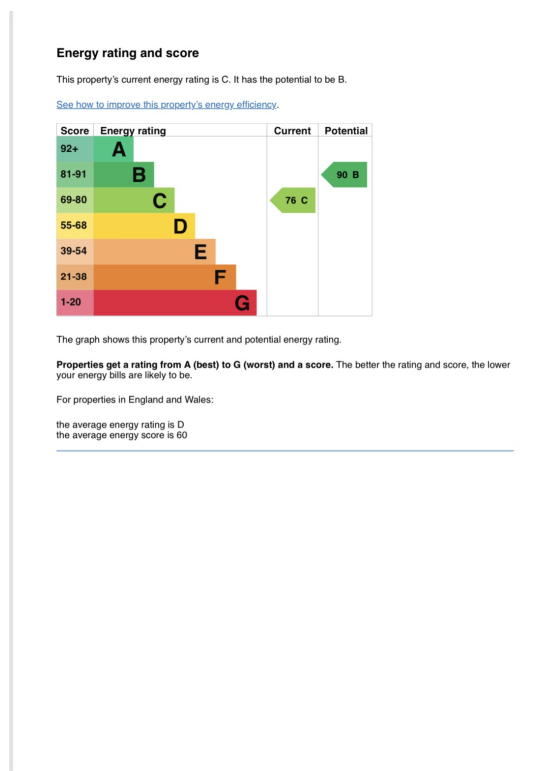
FLOOR PLAN

Illustrations are for identification purposes only and are not to scale.
All measurements are a maximum and include wardrobes and bay windows where applicable.



EPC GRAPH

Illustrations are for identification purposes only and are not to scale.
All measurements are a maximum and include wardrobes and bay windows where applicable.



Disclaimer: The information displayed about this property comprises a property advertisement. 99home.co.uk (/) will not make no warranty for the accuracy or completeness of the advertisement or any linked or associated information, and 99home has no control over the content. This property advertisement does not constitute property particulars, the property may offer to tenants in same condition as they have seen on time of the viewing. The information is provided and maintained by 99home.co.uk (/)

