

5 Bed Detached In Broomhill Drive , Bramhall, Stockport, SK7 3NJ £1,180,000





SHORT DESCRIPTION

Property Ref: 12731 EXECUTIVE FIVE BEDROOM DETACHED HOUSE ... DOUBLE GARAGE & PRIVATE DRIVE... IN A CUL DE SAC... OPEN PLAN KITCHEN / DINING ROOM... Situated in the greenery of Bramhall. Great location with tennis courts a stone throw away, Bramhall Park nearby and a golf course a short walk away. Plenty of schools nearby to choose from. All 5 bedrooms are double with plenty of built in storage space and two with on suites. Wide drive and double garage with ample parking. Entrance Hall - With tiled floor and built in closet and powder room. Office/reception room with carpeted covering to the left. Lounge With fairly new carpet covering, fire surround with wood fire, looking into the green vast back garden. Under stair storage cupboard. Spacious bright kitchen with recent built extension leading into an open space dining room/family room with a modern efficient gas fireplace. Built with three very wide sliding doors, which can be slide into one, leading into the back garden and fresh air. Stairs & Landing - With carpeted floor covering, cylinder cupboard and loft access. Master bedroom - 4.86m x 4.61 m. With fairly new carpeted floor covering, his and her closets, leading into a five piece on suite. Bedroom two - 4.47 m x 3.22 m. With carpeted floor covering, two built in closets and three piece on suite. Bedroom three, four and five have built in closets and carpeted floor covering. The main bathroom has five pieces with double sinks. There are 3.5 bathroom. Gardens-To the front of the property there is a private drive leading to the double garage and a nice garden with plants and shrubs. To the rear of the property there is a large very private fenced green South/West garden with leafy mature trees. Very quiet cul de sac and very ideal for the growing family. A must see to feel the flow of the home.....

5

Bed Room(s)

3

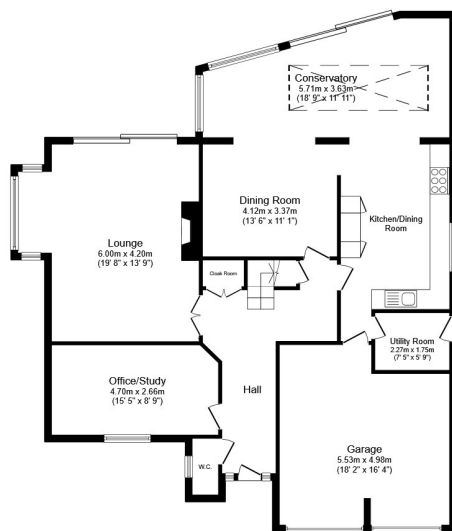
Bath Room(s)

3

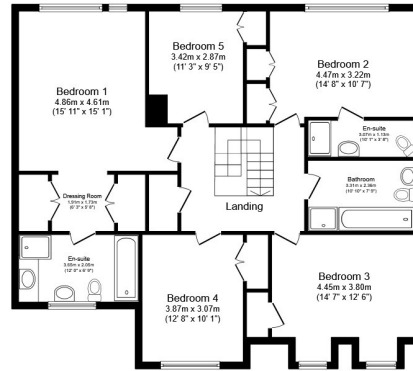
Living Room(s)

FLOOR PLAN

Illustrations are for identification purposes only and are not to scale.
All measurements are a maximum and include wardrobes and bay windows where applicable.



Ground Floor



First Floor

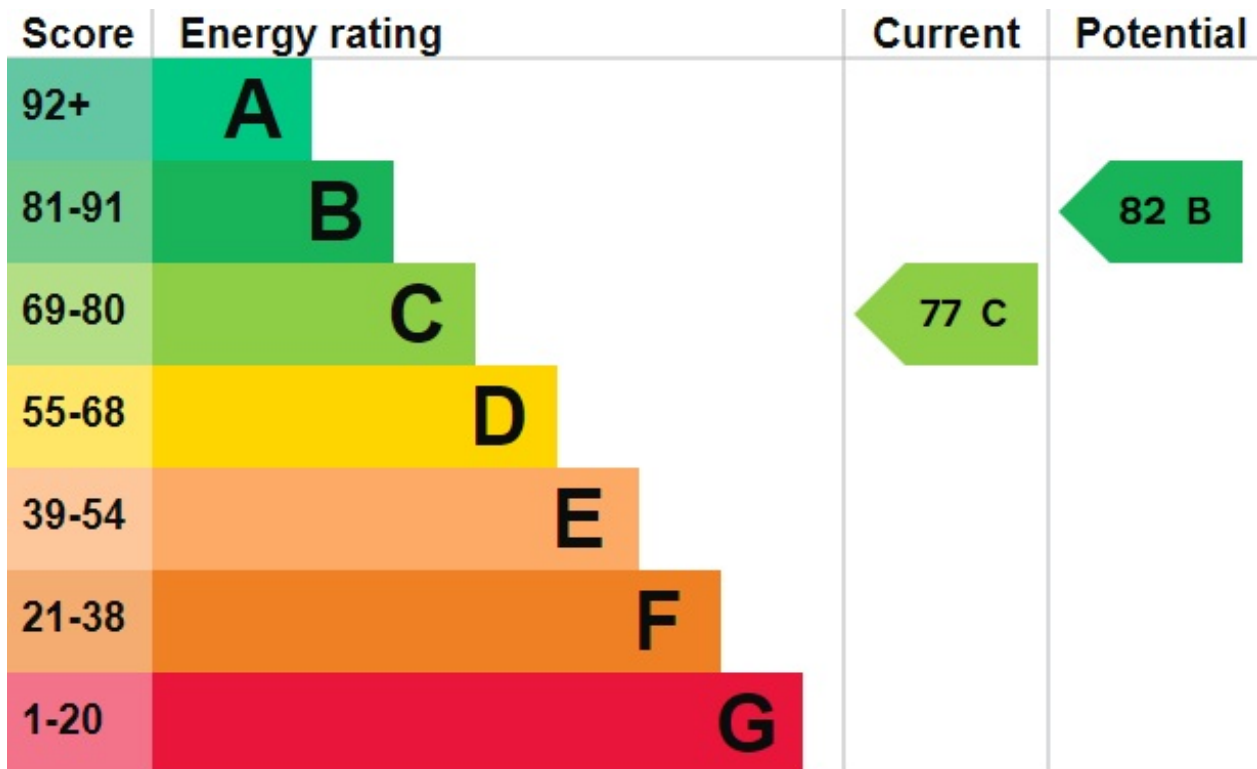
Total floor area 270.8 m² (2,915 sq.ft.) approx

This floor plan is for illustrative purposes only. It is not drawn to scale. Any measurements, floor areas (including any total floor area), openings and orientation are approximate. No details are guaranteed, they cannot be relied upon for any purpose and they do not form part of any agreement. No liability is taken for any error, omission or misstatement. A party must rely upon its own inspection(s). Powered by www.focalagent.com

EPC GRAPH

Illustrations are for identification purposes only and are not to scale.

All measurements are a maximum and include wardrobes and bay windows where applicable.



Disclaimer: The information displayed about this property comprises a property advertisement. 99home.co.uk (/) will not make no warranty for the accuracy or completeness of the advertisement or any linked or associated information, and 99home has no control over the content. This property advertisement does not constitute property particulars, the property may offer to tenants in same condition as they have seen on time of the viewing. The information is provided and maintained by 99home.co.uk (/)

