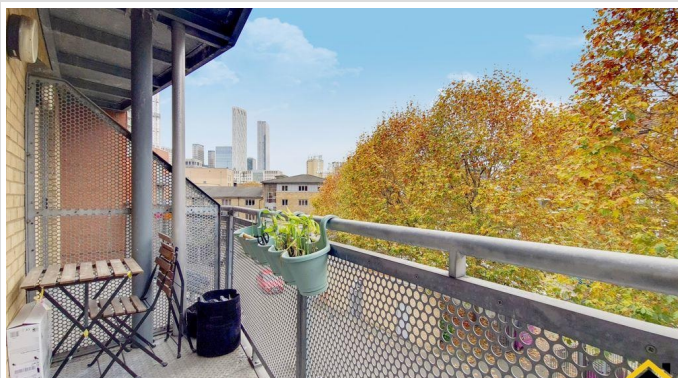


## 1 Bed Flat In Rich Street , London, E14 8AL

£1,650 Monthly





## SHORT DESCRIPTION

Property Ref: 12989 Council Tax Band: C Weekly Rent: £380.77 EPC: C Deposit: £1903.85 Available Immediately. Unfurnished. A stunningly presented one bed apartment located in the Westferry Area, moments from DLR station and Canary Wharf stations (incl. Elizabeth Line) This apartment comprises of one double bedrooms, a modern fully fitted kitchen, modern bathroom, spacious reception room and is decorated to a very high standard throughout. \* Spacious bedroom \* Modern, integrated, open plan kitchen <--- Brand new appliances \* Full size contemporary bathroom \* Balcony \* Excellent location \* High end finish This great area is surrounded by various shops, restaurants, bars and many more amenities. Ideal for professionals. Book your viewing now! Summary & Exclusions: - Deposit / Bond: 5 weeks - Property comes unfurnished - Available to move in immediately - Minimum tenancy term is 24 months - Maximum number of tenants is 2 - No Students - No Smokers - Not Suitable for Families / Children Fees: You will not be charged any admin fees. References will be sought....

1

Bed Room(s)

1

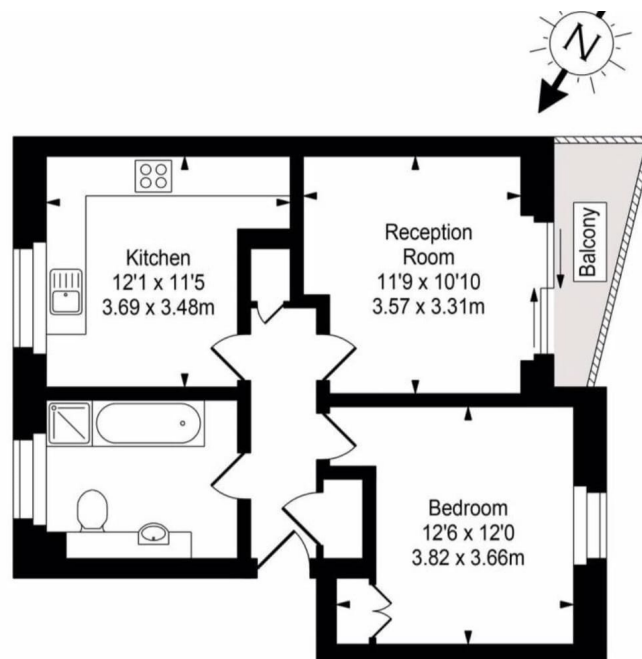
Bath Room(s)

1

Living Room(s)

## FLOOR PLAN

Illustrations are for identification purposes only and are not to scale.  
All measurements are a maximum and include wardrobes and bay windows where applicable.



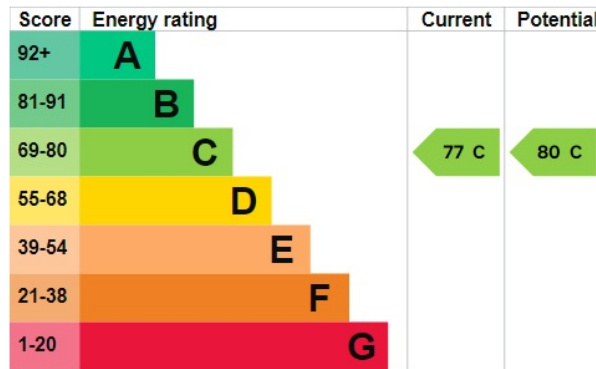
Second Floor

Approx Gross Internal Area 543 Sq Ft - 50.44 Sq M

# EPC GRAPH

Illustrations are for identification purposes only and are not to scale.  
All measurements are a maximum and include wardrobes and bay windows where applicable.

[See how to improve this property's energy efficiency.](#)



The graph shows this property's current and potential energy rating.

**Properties get a rating from A (best) to G (worst) and a score.** The better the rating and score, the lower your energy bills are likely to be.

For properties in England and Wales:

- the average energy rating is D
- the average energy score is 60

**Disclaimer:** The information displayed about this property comprises a property advertisement. 99home.co.uk (/) will not make no warranty for the accuracy or completeness of the advertisement or any linked or associated information, and 99home has no control over the content. This property advertisement does not constitute property particulars, the property may offer to tenants in same condition as they have seen on time of the viewing. The information is provided and maintained by 99home.co.uk (/)

Company registration number in England : 10469887 VAT: 263 3023 36  
Copyright © 99Home Limited 2017. All rights reserved.