

# 1 Bed Apartment In Lightford House, 105 Loughborough Park, Brixton, SW9 8FS

£105,000







## SHORT DESCRIPTION

Property Type: Apartment Full selling price: £430000.00 Pricing Options: Shared ownership Tenure: Leasehold Percentage to be sold: 25% Share price: £107500.00 Monthly rent based on 25% share: £680.13 Rent Review Period: N/A Staircasing allowable: N/A Remaining lease (In Year): 118 Yearly Ground Rent Cost: £0.00 Yearly Management Cost: £1745.40 Council tax band: C EPC rating: B Measurement: Bedrooms, Bathrooms and Living room Outside Space: Rear Garden, Patio Parking: Private Heating Type: Electric Heating Chain Sale or Chain Free: N/A Possession of the property: Occupied -----  
----- Property Ref: 13509 Council Tax:C A spacious one-bedroom apartment situated in heart of Brixton (zone 2) at the Electric Quarter estate. The property boasts a large bedroom with built-in wardrobe, an open plan kitchen and living room, and a generous patio area. The property is a few minutes' walk from Brixton town centre and its thriving nightlife. Brixton tube station is just an 8-minute walk away, and is a 9-minute walk to Loughborough Junction overground. Parking is private run, and is free once you obtain a permit. It is also just a short walk from Brockwell Park, which offers glorious views of the the skyline and views of Central London.



**Bed Room(s)**



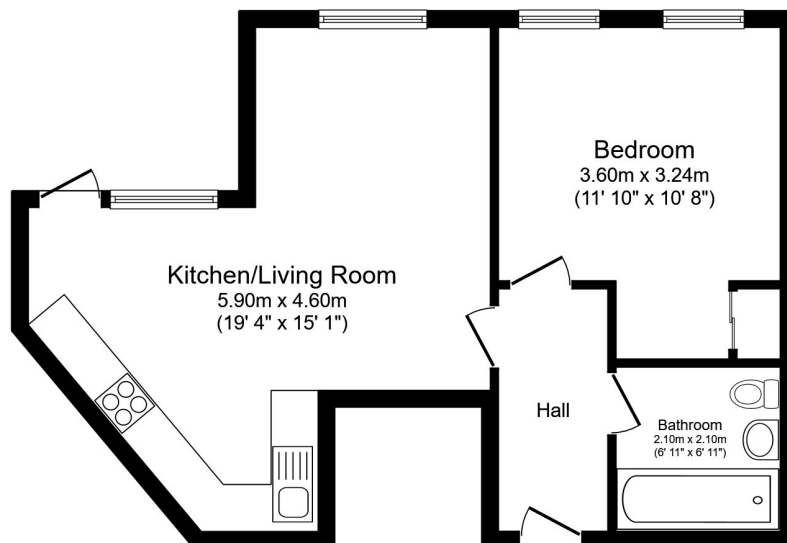
**Bath Room(s)**



**Living Room(s)**

## FLOOR PLAN

Illustrations are for identification purposes only and are not to scale.  
All measurements are a maximum and include wardrobes and bay windows where applicable.

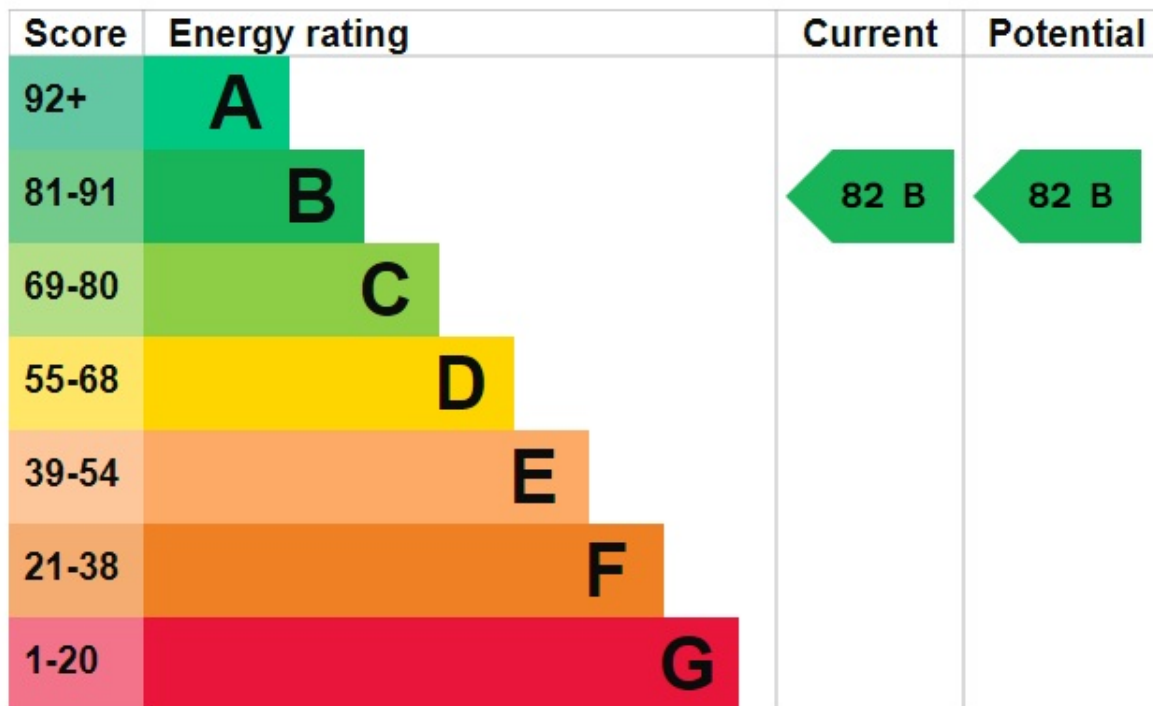


Total floor area 48.1 m<sup>2</sup> (518 sq.ft.) approx

This floor plan is for illustrative purposes only. It is not drawn to scale. Any measurements, floor areas (including any total floor area), openings and orientation are approximate. No details are guaranteed, they cannot be relied upon for any purpose and they do not form part of any agreement. No liability is taken for any error, omission or misstatement. A party must rely upon its own inspection(s). Powered by [www.focalagent.com](http://www.focalagent.com)

# EPC GRAPH

Illustrations are for identification purposes only and are not to scale.  
All measurements are a maximum and include wardrobes and bay windows where applicable.



**Disclaimer:** The information displayed about this property comprises a property advertisement. 99home.co.uk (/) will not make no warranty for the accuracy or completeness of the advertisement or any linked or associated information, and 99home has no control over the content. This property advertisement does not constitute property particulars, the property may offer to tenants in same condition as they have seen on time of the viewing. The information is provided and maintained by 99home.co.uk (/)

Company registration number in England : 10469887 VAT: 263 3023 36  
Copyright © 99Home Limited 2017. All rights reserved.