



99Home Ltd.

99Home Ltd,
Sutton Business Centre,
Restmor Way,
Wallington,
SM6 7AH,
Phone :0203 5000 999
Email
:info@99home.co.uk

4 Bed Barn Conversion In Gatehouse Of Fleet , Castle Douglas, DG7 2HA

£285,000



Ref:13726





SHORT DESCRIPTION

Property Ref no- 13726.. Exceptional Barn Conversion completed in 2019, located at Southview, Gatehouse of Fleet, DG7 . It has wonderful sea views, ultra fast fibre Broadband and Digital telephone. There are 4 bedrooms, 2 bathrooms and 1 living room also a fully-fitted kitchen and utility room, all insulated to the highest standards. It has an enclosed rear Garden with allocated Driveway and Rear Off Street parking. All kitchen appliances go with the house. Positioned on a quiet back road but within 2 miles from the A75, it offers easy access to local amenities at Gatehouse and Kirkcudbright (the Scottish artist town). There is a primary school at Gatehouse and a secondary school at Kirkcudbright, both highly respected. The sea views are exceptional, you can see from the Isles of Fleet round to the Isle of Man. There are wonderful sandy beaches within a 15 minute cycle ride. The Home Report valuation is of the bricks and mortar of the house only and does not reflect the idyllic situation. Property Type: Barn conversion Full selling price: £285000.00 Pricing Options: Offers in excess of Tenure: Freehold Council tax band: D EPC rating: D Measurement: 1323.96 sq.ft. Outside Space: Rear Garden, Enclosed Garden Parking: Allocated, Driveway, Rear, Off street Heating Type: Gas Central Heating Chain Sale or Chain Free:Chain Free Possession of the property: Self-Occupied... -----

4

Bed Room(s)

2

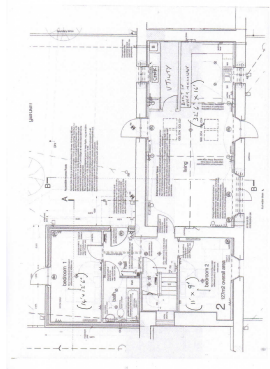
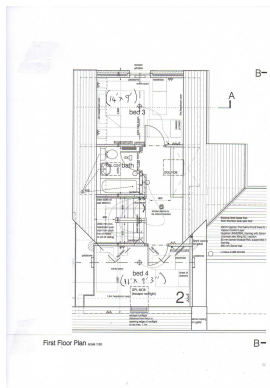
Bath Room(s)

1

Living Room(s)

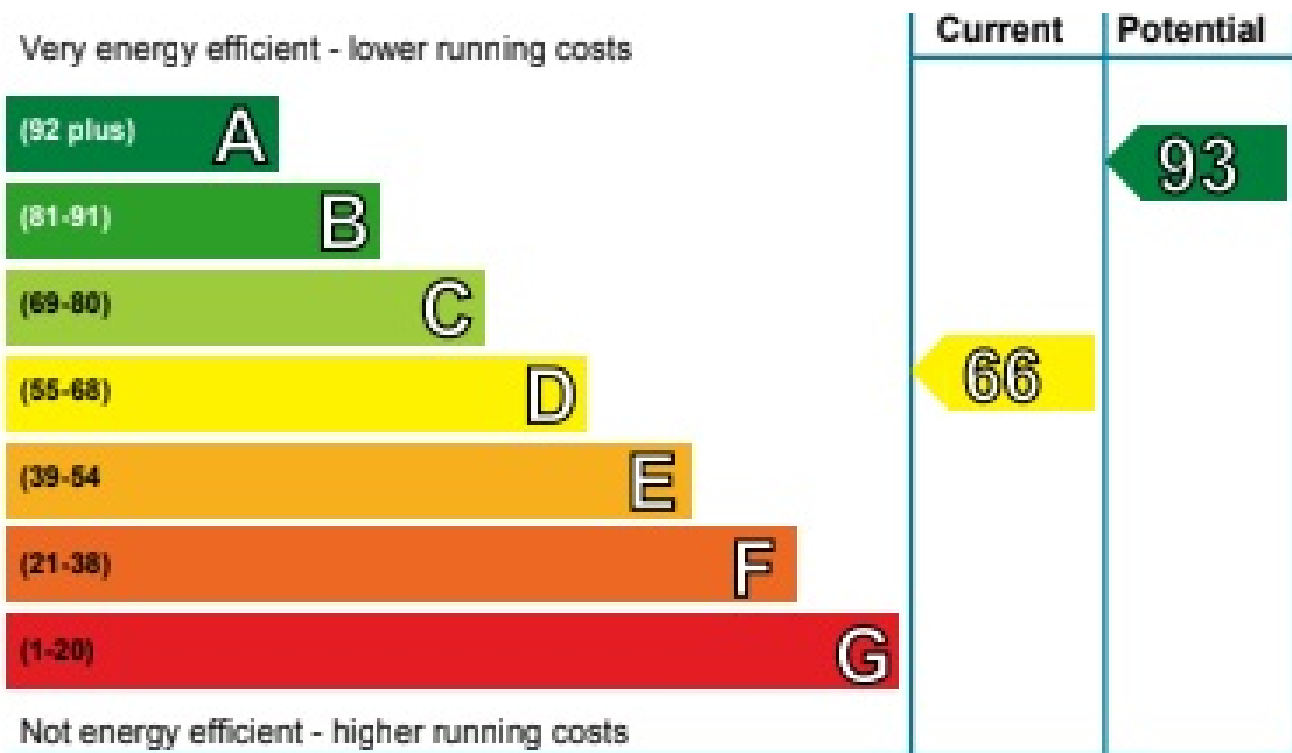
FLOOR PLAN

Illustrations are for identification purposes only and are not to scale.
All measurements are a maximum and include wardrobes and bay windows where applicable.



EPC GRAPH

Illustrations are for identification purposes only and are not to scale.
All measurements are a maximum and include wardrobes and bay windows where applicable.



Disclaimer: The information displayed about this property comprises a property advertisement. 99home.co.uk (<http://www.99home.co.uk/>) will not make no warranty for the accuracy or completeness of the advertisement or any linked or associated information, and 99home has no control over the content. This property advertisement does not constitute property particulars, the property may offer to tenants in same condition as they have seen on time of the viewing. The information is provided and maintained by 99home.co.uk (<http://www.99home.co.uk/>)

