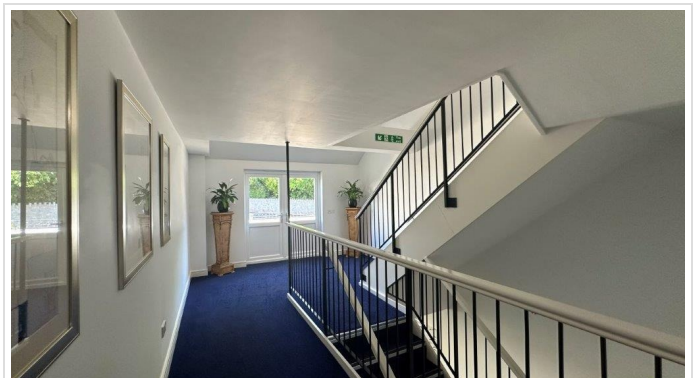
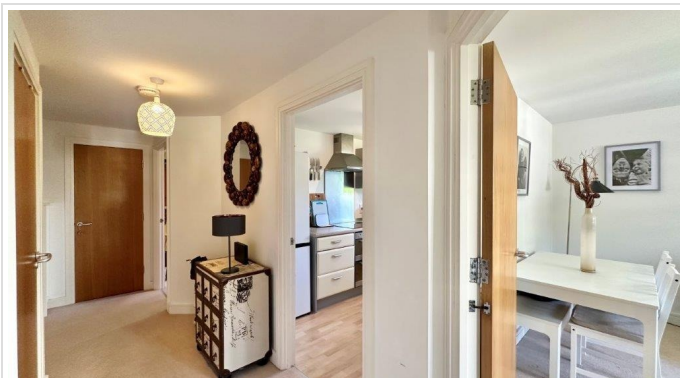


## 2 Bed Apartment In Fonthill Lower Warberry Road, Torquay, TQ1 1QP

£1,050 Monthly





## SHORT DESCRIPTION

Property Ref: 14125 LONG LET PREFERRED Located in the very desirable location of Wellwood and a short walk to the local shops is this luxurious apartment. Communal Entrance Hall with access to the apartment via stairs or lift. Secure Door Entry System. Two Double Bedrooms with lovely views from both Windows. Spacious Sitting/Dining Room with dual aspect. Modern fitted kitchen with some sea glimpses in the distance. Good Size Family Bathroom. No Pets allowed. Sitting Room 3.96m x 3.81m Kitchen 3.18m x 2.24m Bedroom 1 4.27m and 2.97m Bedroom 2 4.14m x 3.3m Bathroom 2.54m x 2.11m Property Type: Apartment Full Renting price: £1050.00 Pricing Options: No Status Tenure: 12 months Council tax band: C EPC rating: B Measurement: 721.182 sq.ft. Outside Space: Communal Garden Parking: Residents Heating Type: Electric Heating -----

2

Bed Room(s)

1

Bath Room(s)

1

Living Room(s)

## FLOOR PLAN

Illustrations are for identification purposes only and are not to scale.  
All measurements are a maximum and include wardrobes and bay windows where applicable.



## EPC GRAPH

Illustrations are for identification purposes only and are not to scale.  
All measurements are a maximum and include wardrobes and bay windows where applicable.

Score	Energy rating	Current	Potential
92+	A		
81-91	B	84 B	85 B
69-80	C		
55-68	D		
39-54	E		
21-38	F		
1-20	G		

**Disclaimer:** The information displayed about this property comprises a property advertisement. 99home.co.uk (/) will not make no warranty for the accuracy or completeness of the advertisement or any linked or associated information, and 99home has no control over the content. This property advertisement does not constitute property particulars, the property may offer to tenants in same condition as they have seen on time of the viewing. The information is provided and maintained by 99home.co.uk (/)