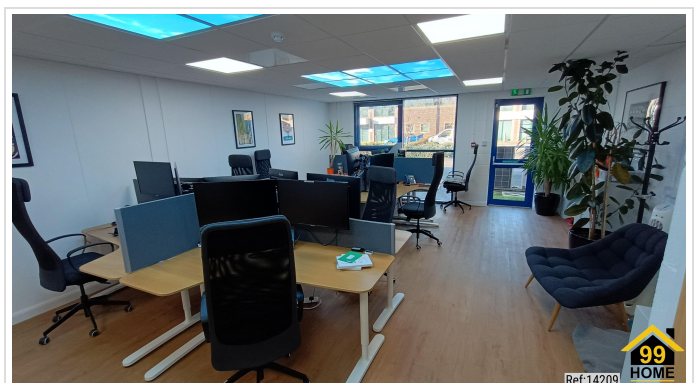
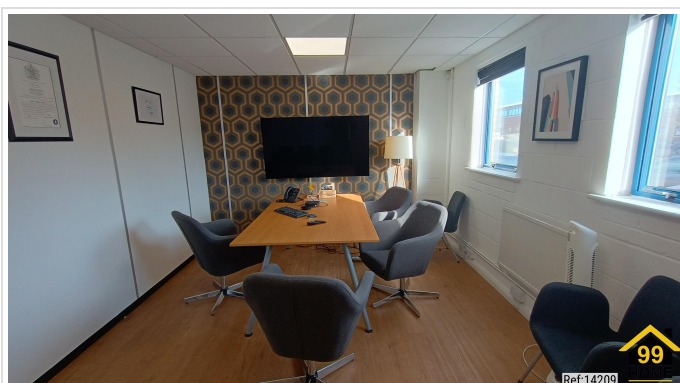


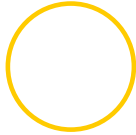
Office In Shrivenham Hundred Business Park, Majors Road , Watchfield,
Swindon, SN6 8TY

£1,890 Monthly

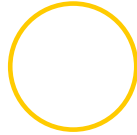


SHORT DESCRIPTION

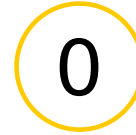
Property Ref: 14209 A ground floor business unit offering flexible office and meeting room space, plus a kitchen and staff lounge area, which has all been finished to a very high standard. There are 7 parking spaces to the rear, and 4 EV car charging points. Shrivenham Hundred Business Park is located adjacent to the A420 Swindon to Oxford road, approximately 9 miles to the east of Swindon. The A419 dual carriageway provides direct access to Junction 15 of the M4 to the south and the M5 to the north. The adjoining villages of Shrivenham and Watchfield provide local facilities and services and the Park is also served by a nearby Co-Operative, opticians and hair salon. Total Sq ft 2300. Property Type: Office Full Renting price: £1890.00 Pricing Options: Fixed Price Parking: Allocated Heating Type: Electric Heating -----



Bed Room(s)



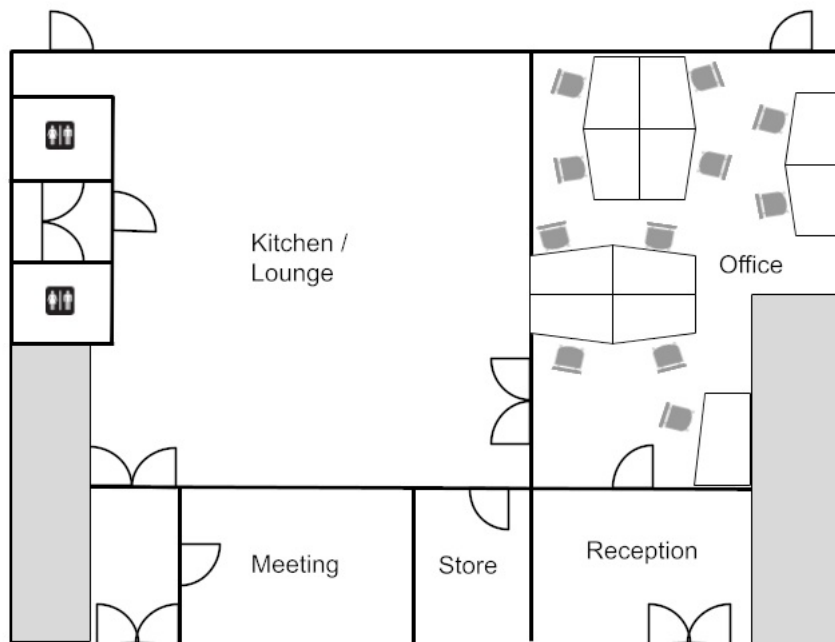
Bath Room(s)



Living Room(s)

FLOOR PLAN

Illustrations are for identification purposes only and are not to scale.
All measurements are a maximum and include wardrobes and bay windows where applicable.



EPC GRAPH

Illustrations are for identification purposes only and are not to scale.
All measurements are a maximum and include wardrobes and bay windows where applicable.

Disclaimer: The information displayed about this property comprises a property advertisement. 99home.co.uk (/) will not make no warranty for the accuracy or completeness of the advertisement or any linked or associated information, and 99home has no control over the content. This property advertisement does not constitute property particulars, the property may offer to tenants in same condition as they have seen on time of the viewing. The information is provided and maintained by 99home.co.uk (/)