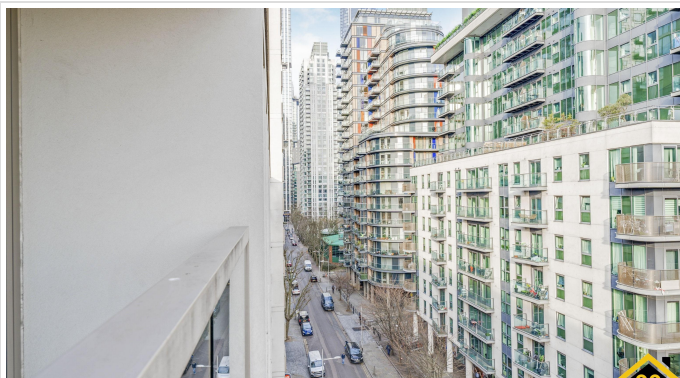


2 Bed Flat In Westwood House 54 Millharbour, London, E14 9DJ £144,000





## SHORT DESCRIPTION

Property Ref: 14350 We are pleased to present an exceptional Flat located at Westwood House, 54 Millharbour Lane, E14. This wonderful residence boasts 2 bedrooms, 1 bathroom, and 1 combined living/kitchen/dining room, offering ample space for comfortable living. Additionally, it features a fully-fitted kitchen, which is ideal for culinary enthusiasts. Positioned in a prime location, this property offers easy access to a range of local amenities and public transportation, ensuring convenience for residents. Its proximity to esteemed schools and a college enhances its appeal, providing families with access to excellent educational opportunities. This residence embodies the perfect blend of comfort, convenience, and quality living, making it an ideal choice for discerning individuals or families seeking a place to call home. It includes a Heat Exchange System.

2

Bed Room(s)

1

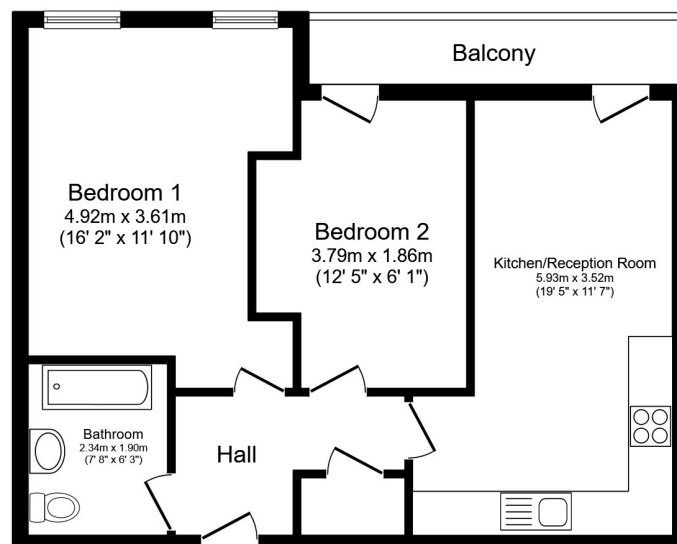
Bath Room(s)

1

Living Room(s)

## FLOOR PLAN

Illustrations are for identification purposes only and are not to scale.  
All measurements are a maximum and include wardrobes and bay windows where applicable.



Total floor area 55.6 m<sup>2</sup> (598 sq.ft.) approx

This floor plan is for illustrative purposes only. It is not drawn to scale. Any measurements, floor areas (including any total floor area), openings and orientation are approximate. No details are guaranteed, they cannot be relied upon for any purpose and they do not form part of any agreement. No liability is taken for any error, omission or misstatement. A party must rely upon its own inspection(s). Powered by [www.focalagent.com](http://www.focalagent.com)

## EPC GRAPH



Illustrations are for identification purposes only and are not to scale.  
All measurements are a maximum and include wardrobes and bay windows where applicable.

Score	Energy rating	Current	Potential
92+	A		
81-91	B		
69-80	C	80 C	80 C
55-68	D		
39-54	E		
21-38	F		
1-20	G		

The graph shows this property's current and potential energy rating.

**Properties get a rating from A (best) to G (worst) and a score.** The better the rating and score, the lower your energy bills are likely to be.

For properties in England and Wales:

- the average energy rating is D
- the average energy score is 60

---

**Disclaimer:** The information displayed about this property comprises a property advertisement. 99home.co.uk (/) will not make no warranty for the accuracy or completeness of the advertisement or any linked or associated information, and 99home has no control over the content. This property advertisement does not constitute property particulars, the property may offer to tenants in same condition as they have seen on time of the viewing. The information is provided and maintained by 99home.co.uk (/)

---

Company registration number in England : 10469887 VAT: 263 3023 36  
Copyright © 99Home Limited 2017. All rights reserved.