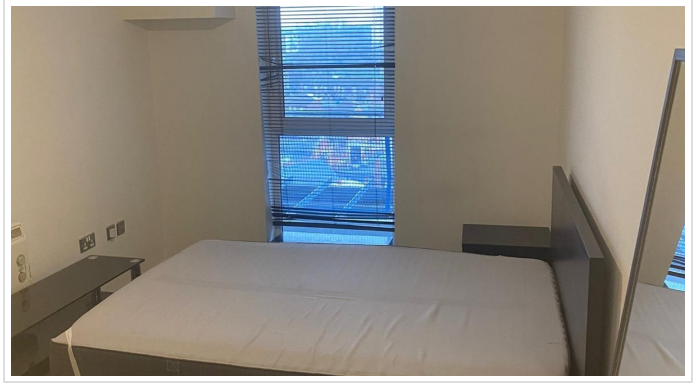


## 2 Bed Flat In The Vista Building 30 Calderwood Street, London, SE18 6JH

£1,750 Monthly





## SHORT DESCRIPTION

Property Ref: 14442 We are pleased to present an exceptional located at The Vista Building, London, SE18. This wonderful residence boasts 2 bedrooms, 2 bathrooms, and 1 living room, offering ample space for comfortable living. Additionally, it features a fully-fitted kitchen, ideal for culinary enthusiasts, along with the convenience of parking by separate negotiation. Positioned in a prime location with views of the Thames, this property offers easy access to a range of local amenities and public transportation, ensuring convenience for residents. Its proximity to esteemed schools and a college enhances its appeal, providing families with access to excellent educational opportunities. This residence embodies the perfect blend of comfort, convenience, and quality living, making it an ideal choice for discerning individuals or families seeking a place to call home. Property Type: Flat Total Renting amount: £1750.00 Pricing Options: Fixed Price Council tax band: C EPC rating: B Measurement: Total 764.238 sq.ft. Outside Space: N/A Parking: Off street Heating Type: Oil -----

2

Bed Room(s)

2

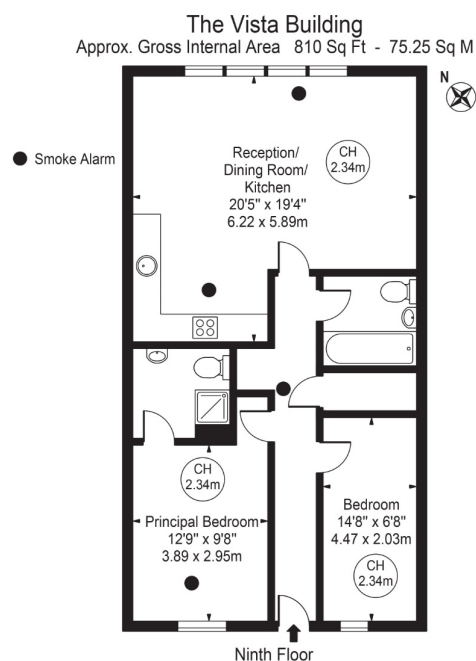
Bath Room(s)

1

Living Room(s)

## FLOOR PLAN

Illustrations are for identification purposes only and are not to scale.  
All measurements are a maximum and include wardrobes and bay windows where applicable.



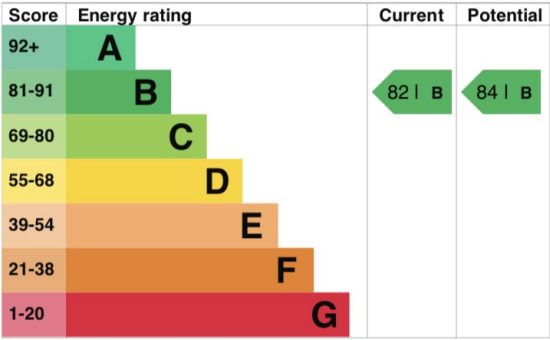
# EPC GRAPH

Illustrations are for identification purposes only and are not to scale.  
All measurements are a maximum and include wardrobes and bay windows where applicable.

## Energy efficiency rating for this property

This property's current energy rating is B. It has the potential to be B.

[See how to improve this property's energy performance.](#)



The graph shows this property's current and potential energy efficiency.

Properties are given a rating from A (most efficient) to G (least efficient).

Properties are also given a score. The higher the number the lower your fuel bills are likely to be.

For properties in England and Wales:

the average energy rating is D  
the average energy score is 60

**Disclaimer:** The information displayed about this property comprises a property advertisement. 99home.co.uk (/) will not make no warranty for the accuracy or completeness of the advertisement or any linked or associated information, and 99home has no control over the content. This property advertisement does not constitute property particulars, the property may offer to tenants in same condition as they have seen on time of the viewing. The information is provided and maintained by 99home.co.uk (/)