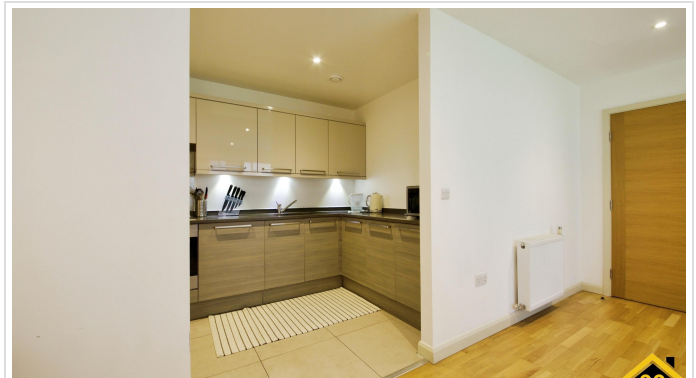


2 Bed Apartment In Tulip Court Alpine Road, London, NW9 9BS £2,000 Monthly





## SHORT DESCRIPTION

Property Ref: 14562 Discover this stylish and well-presented two-bedroom flat in Tulip Court, situated in the heart of NW9. Offering a bright and spacious living environment, this property is perfect for only small family(1 couple and 1 child only). Key Features: PART Furnished Two generously sized bedrooms with ample natural light Modern open-plan living area with space for dining Fully fitted kitchen with integrated appliances Contemporary bathroom with sleek finishes Private balcony for outdoor relaxation Secure entry system for peace of mind Excellent transport links - close to Colindale & Kingsbury stations Local amenities nearby - supermarkets, restaurants, and parks Property Type: Apartment Full selling price: £2000.00 Pricing Options: Fixed Price Council tax band: D EPC rating: B Measurement:914.932 sq.ft. Outside Space: Balcony Parking: Allocated Heating Type: Gas Central Heating ----- This fantastic flat is available immediately. Don't miss out on this great opportunity!!

2

Bed Room(s)

2

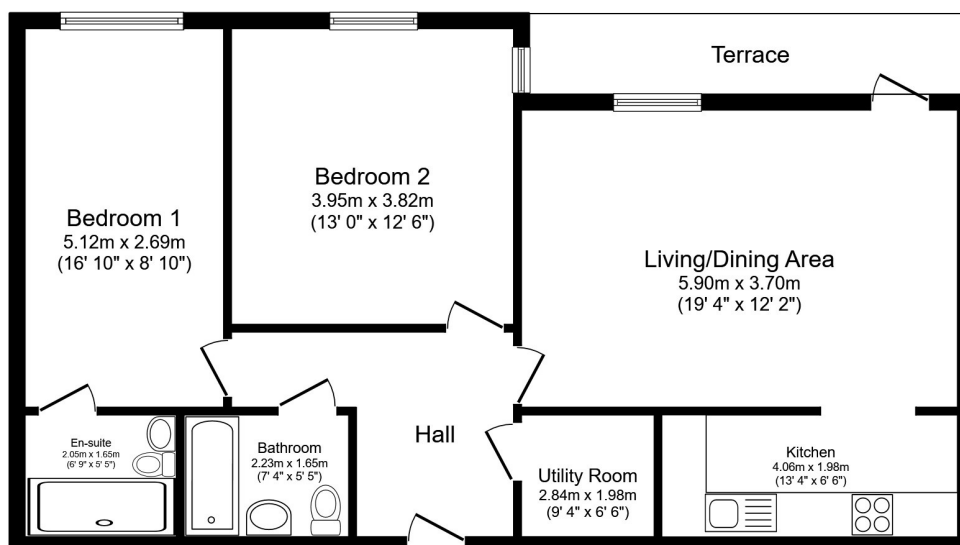
Bath Room(s)

1

Living Room(s)

## FLOOR PLAN

Illustrations are for identification purposes only and are not to scale.  
All measurements are a maximum and include wardrobes and bay windows where applicable.



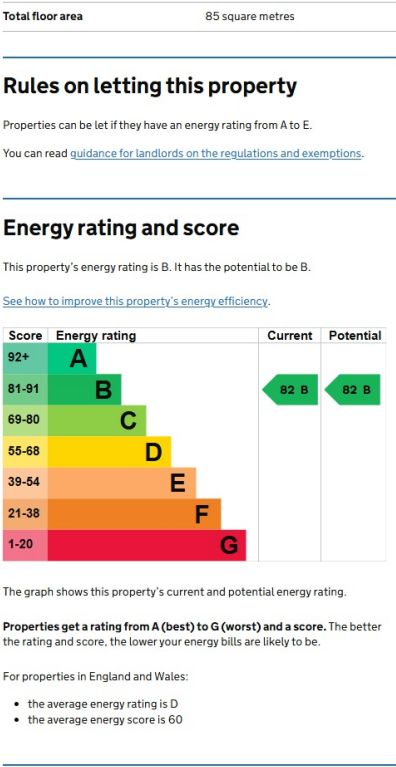
Total floor area 80.0 m<sup>2</sup> (862 sq.ft.) approx

This floor plan is for illustrative purposes only. It is not drawn to scale. Any measurements, floor areas (including any total floor area), openings and orientation are approximate. No details are guaranteed, they cannot be relied upon for any purpose and they do not form part of any agreement. No liability is taken for any error, omission or misstatement. A party must rely upon its own inspection(s). Powered by [www.focalagent.com](http://www.focalagent.com)



# EPC GRAPH

Illustrations are for identification purposes only and are not to scale.  
All measurements are a maximum and include wardrobes and bay windows where applicable.



**Disclaimer:** The information displayed about this property comprises a property advertisement. 99home.co.uk (/) will not make no warranty for the accuracy or completeness of the advertisement or any linked or associated information, and 99home has no control over the content. This property advertisement does not constitute property particulars, the property may offer to tenants in same condition as they have seen on time of the viewing. The information is provided and maintained by 99home.co.uk (/)