



**99Home Ltd.**

99Home Ltd,  
Sutton Business Centre,  
Restmor Way,  
Wallington,  
SM6 7AH,  
Phone :0203 5000 999  
Email  
:info@99home.co.uk

---

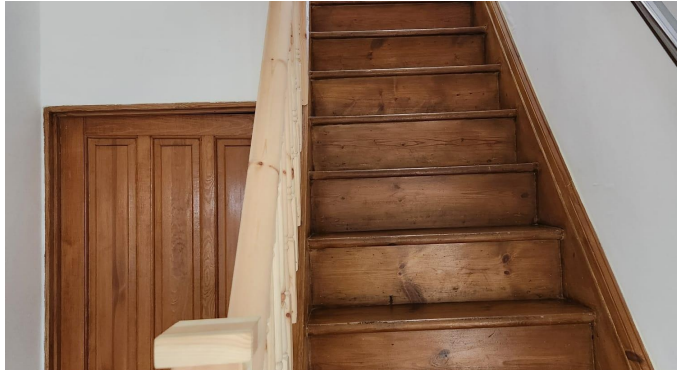
3 Bed Semi-Detached In Knighton Road , Romford, RM7 9BU

£2,250 Monthly



Ref:14630





## SHORT DESCRIPTION

**\*\*Property Ref: 14630\*\*** Charming Three-Bedroom Semi-Detached Home - Knighton Road, Romford RM7 Discover the perfect blend of comfort and convenience in this delightful three-bedroom semi-detached home, nestled in a peaceful Romford neighborhood. **Key Features** **Spacious Bedrooms** - Three generously sized rooms provide ample space for rest and relaxation, ideal for families or professionals. **Modern Bathrooms** - Two well-appointed bathrooms ensure practicality and ease for your daily routine. **Welcoming Reception Area** - A cozy and inviting space, perfect for entertaining guests or unwinding after a long day. **Stylish Kitchen & Dining** - A chef's dream with ample counter space and modern appliances. The adjoining dining area is perfect for family meals and social gatherings. **Private Garden** - A spacious outdoor retreat, ideal for gardening, entertaining, or simply soaking up the sun. **Convenient Parking** - On-street parking provides hassle-free access for residents and visitors. **Prime Location** - Enjoy easy access to shops, schools, parks, public transport, and healthcare facilities, making everyday life a breeze. Don't miss out on this fantastic opportunity to call Knighton Road, Romford your home! Contact us today to arrange a viewing. **Property Type:** Semi-Detached **Full Letting price:** £2250.00 **Pricing Options:** Fixed Price **Tenure:** 12 months **Council tax band:** D **EPC rating:** D **Measurement:** Total Floor Area: 114.3 sq.m. **Parking:** On Street **Heating Type:** Gas Central Heating **Let Type:** Long term **Furnishing Type:** Fully furnished **Asking Deposit:** £2596 **Weekly Deposit:** £519 **Term:** 12 months contract **Bills:** Excluded **Let Available Date:** 05/03/2025 **Min. Tenancy:** 12 months

3

**Bed Room(s)**

2

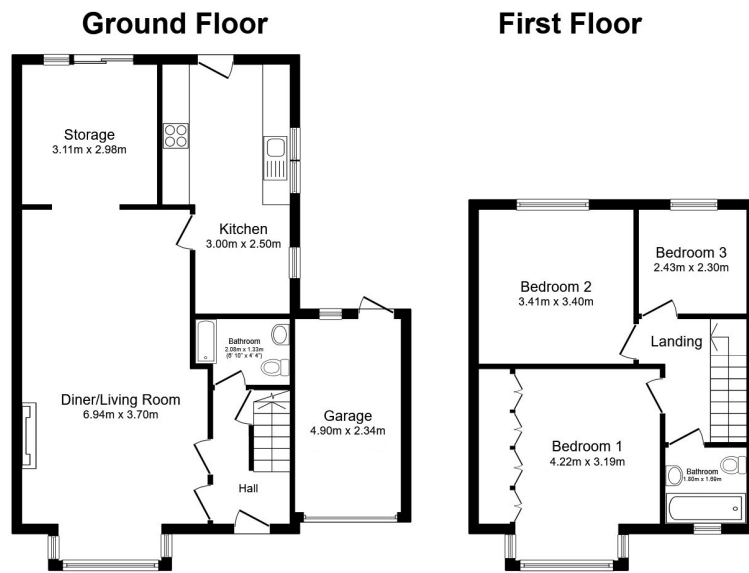
**Bath Room(s)**

2

**Living Room(s)**

## FLOOR PLAN

Illustrations are for identification purposes only and are not to scale.  
All measurements are a maximum and include wardrobes and bay windows where applicable.



Total floor area 114.3 m<sup>2</sup> (1,230 sq.ft.) approx

This floor plan is for illustrative purposes only. It is not drawn to scale. Any measurements, floor areas (including any total floor area), openings and orientation are approximate. No details are guaranteed, they cannot be relied upon for any purpose and they do not form part of any agreement. No liability is taken for any error, omission or misstatement. A party must rely upon its own inspection(s). Powered by [www.focalagent.com](http://www.focalagent.com)

## EPC GRAPH

Illustrations are for identification purposes only and are not to scale.

All measurements are a maximum and include wardrobes and bay windows where applicable.

Property type	Semi-detached house
Total floor area	93 square metres

### Rules on letting this property

Properties can be let if they have an energy rating from A to E.

You can read [guidance for landlords on the regulations and exemptions](#).

### Energy rating and score

This property's energy rating is D. It has the potential to be B.

[See how to improve this property's energy efficiency.](#)

Score	Energy rating	Current	Potential
92+	A		
81-91	B		86 B
69-80	C		
55-68	D	67 D	
39-54	E		
21-38	F		
1-20	G		

The graph shows this property's current and potential energy rating.

**Disclaimer:** The information displayed about this property comprises a property advertisement. 99home.co.uk (/) will not make no warranty for the accuracy or completeness of the advertisement or any linked or associated information, and 99home has no control over the content. This property advertisement does not constitute property particulars, the property may offer to tenants in same condition as they have seen on time of the viewing. The information is provided and maintained by 99home.co.uk (/)

