

## 5 Bed Semi-Detached In The Green , Richmond, TW9 1QF

£3,900,000







## SHORT DESCRIPTION

Property Ref: 14742 A Rare Opportunity in the Heart of Richmond – 5-Bedroom Semi-Detached Home on The Green Positioned on the highly sought-after The Green in Richmond, this distinguished five-bedroom semi-detached residence presents a unique opportunity to create your dream home in one of London’s most desirable locations. With its classic façade, spacious driveway, and charming front and rear gardens, this home is brimming with character and untapped potential. Located moments from Richmond Green, the River Thames, and the array of boutique shops, restaurants, and cafés in the town centre, this property also enjoys excellent transport links and proximity to highly regarded schools. A home of this stature, in such an enviable location, is a rare find. Viewing is highly recommended to fully appreciate its charm, potential, and exceptional setting. Property Type: Semi-detached Full selling price: £3900000.00 Pricing Options: Guide Price Tenure: Freehold Council tax band: H EPC rating: F Measurement: 3522 sq.ft. Outside Space: Front Garden, Rear Garden Parking: Garage, Driveway Heating Type: Solar Powered, Double Glazing Chain Sale or Chain Free:Chain Free Possession of the property: Self-Occupied -----

5

Bed Room(s)

3

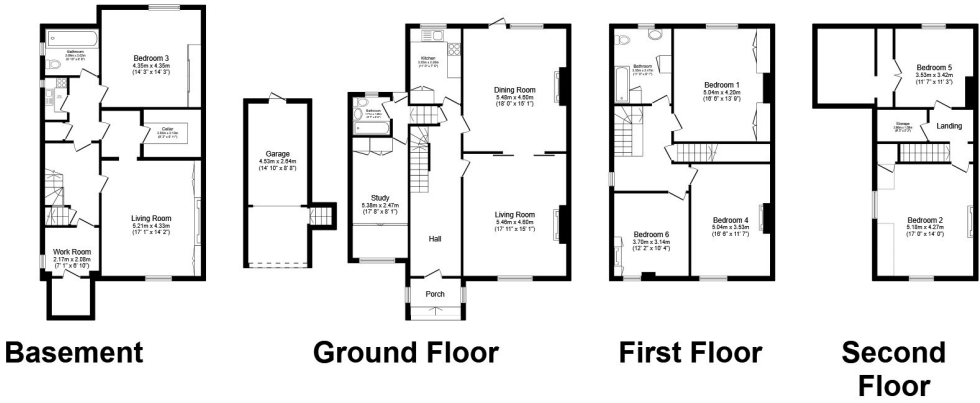
Bath Room(s)

2

Living Room(s)

## FLOOR PLAN

Illustrations are for identification purposes only and are not to scale.  
All measurements are a maximum and include wardrobes and bay windows where applicable.

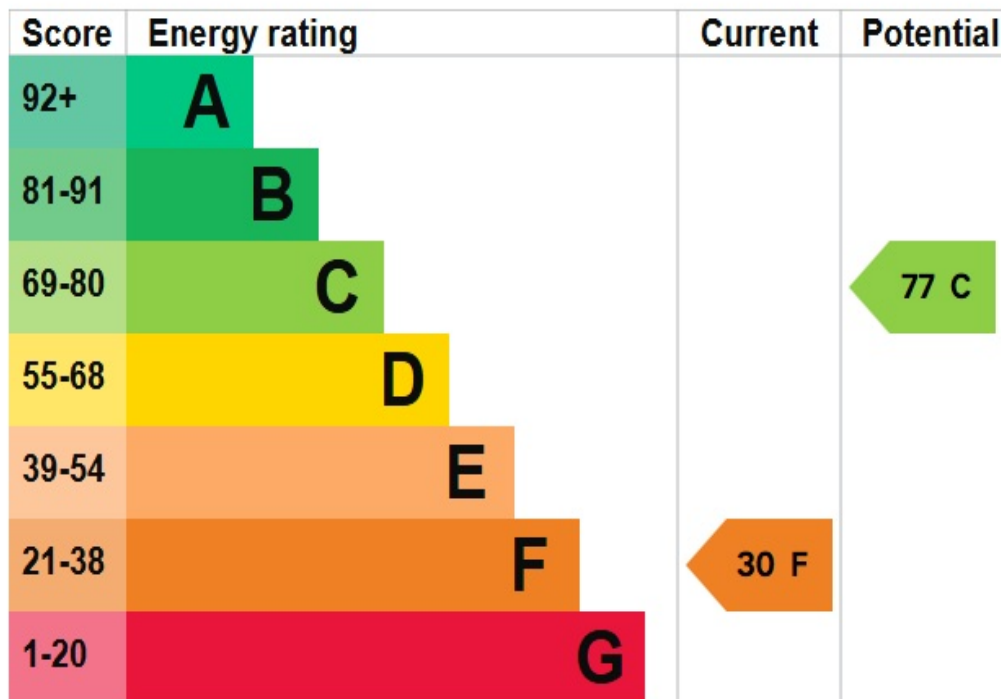


Total floor area 327.2 sq.m. (3,522 sq.ft.) approx

This floor plan is for illustrative purposes only. It is not drawn to scale. Any measurements, floor areas (including any total floor area), openings and orientation are approximate. No details are guaranteed, they cannot be relied upon for any purpose and they do not form part of any agreement. No liability is taken for any error, omission or misstatement. A party must rely upon its own inspection(s). Powered by [www.focalagent.com](http://www.focalagent.com)

# EPC GRAPH

Illustrations are for identification purposes only and are not to scale.  
All measurements are a maximum and include wardrobes and bay windows where applicable.



**Disclaimer:** The information displayed about this property comprises a property advertisement. 99home.co.uk (/) will not make no warranty for the accuracy or completeness of the advertisement or any linked or associated information, and 99home has no control over the content. This property advertisement does not constitute property particulars, the property may offer to tenants in same condition as they have seen on time of the viewing. The information is provided and maintained by 99home.co.uk (/)

Company registration number in England : 10469887 VAT: 263 3023 36  
Copyright © 99Home Limited 2017. All rights reserved.