

4 Bed Flat In Jewell House Weir Road, London, SW12 0NJ

£3,700 Monthly





SHORT DESCRIPTION

Property Ref: 14772 Spacious 4-Bedroom Flat to Let. Presenting this generously sized 4-bedroom flat located in the sought-after Jewell House development on Weir Road, SW12. Perfectly positioned in a quiet residential area yet close to the vibrant heart of Balham, this well-presented property offers ample space and comfort for families or professional sharers alike. The property comprises: Four well-proportioned bedrooms, ideal for families or housemates Two modern bathrooms A bright and airy living room, perfect for relaxing or entertaining A separate fitted kitchen with ample storage and worktop space Double glazing and gas central heating throughout for year-round comfort Located within walking distance to Balham Station (Northern Line and National Rail), this flat offers excellent transport links into Central London. The area also benefits from a wide range of local amenities, including supermarkets, cafes, restaurants, gyms, and the open green spaces of Tooting Common. There is car parking with a permit. This flat offers ample storage throughout and with its brilliant location it would be PERFECT FOR PROFESSIONAL SHARERS! Property Type: Flat Letting Price: £3700.00 Pricing Options: Fixed Price Deposit: 5 weeks Council tax band: C EPC rating: D Outside Space: Communal Garden, Balcony Parking: Permit Heating Type: Gas Central Heating -----

4

Bed Room(s)

2

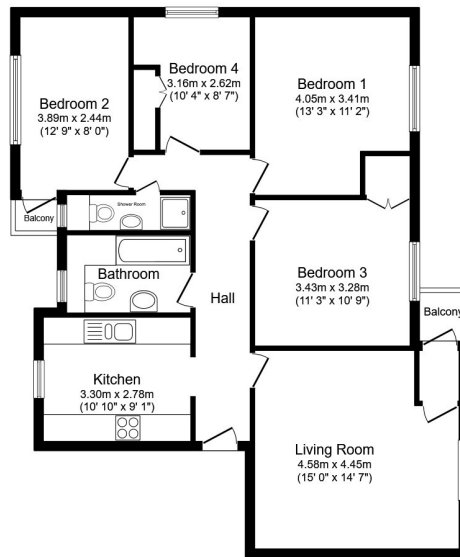
Bath Room(s)

1

Living Room(s)

FLOOR PLAN

Illustrations are for identification purposes only and are not to scale.
All measurements are a maximum and include wardrobes and bay windows where applicable.



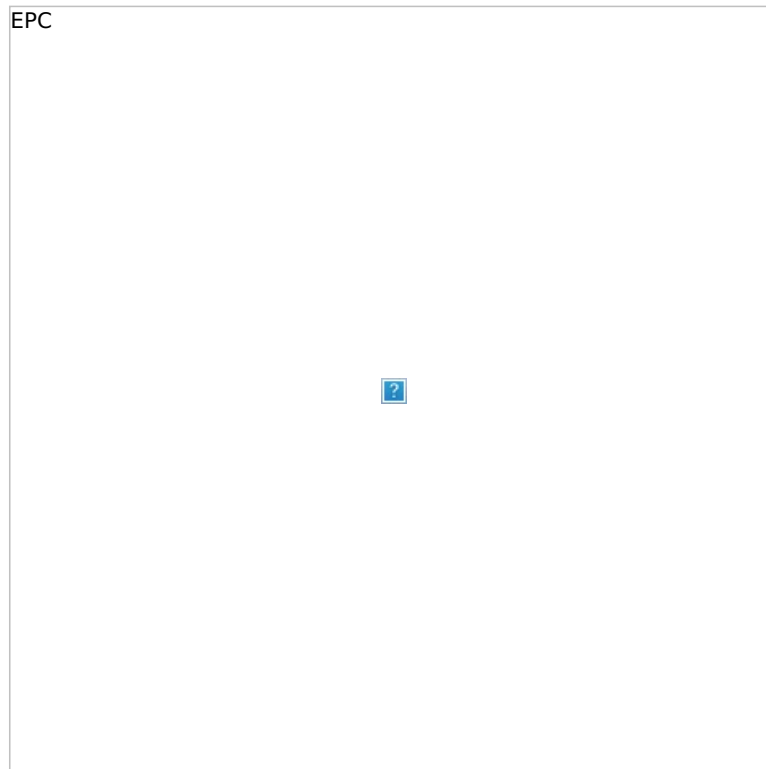
Total floor area 92.0 sq.m. (991 sq.ft.) approx

This floor plan is for illustrative purposes only. It is not drawn to scale. Any measurements, floor areas (including any total floor area), openings and orientation are approximate. No details are guaranteed, they cannot be relied upon for any purpose and they do not form part of any agreement. No liability is taken for any error, omission or misstatement. A party must rely upon its own inspection(s). Powered by www.focalagent.com

EPC GRAPH

Illustrations are for identification purposes only and are not to scale.

All measurements are a maximum and include wardrobes and bay windows where applicable.



Disclaimer: The information displayed about this property comprises a property advertisement. 99home.co.uk (/) will not make no warranty for the accuracy or completeness of the advertisement or any linked or associated information, and 99home has no control over the content. This property advertisement does not constitute property particulars, the property may offer to tenants in same condition as they have seen on time of the viewing. The information is provided and maintained by 99home.co.uk (/)

