

2 Bed Apartment In Oakwood House Oakwood Close, Otterbourne, Winchester,  
SO21 2EX

£279,000







## SHORT DESCRIPTION

Property Ref: 14879 This spacious first floor (top floor) two bedroom apartment, full of natural light, sits within a manor house converted in the 1990s and set amongst manicured lawns and gardens giving a high level of tranquility and privacy, situated at the end of a cul-de-sac. A welcoming entrance hall leads through to a sitting/dining room with large windows and a kitchen with an integrated electric oven and hob with extractor fan. There are two double bedrooms, a modern luxury bathroom with heated towel racks, a utility cupboard as well as plentiful built-in storage. The apartment has a new boiler, installed in the last 5 years. The apartment comes with residents, off-street parking as well as visitor spaces. It is surrounded by lovely nature trails and walking opportunities. It is within a 5-10 minute walking distance to a local pub and supermarket. - Grand Entrance - High Ceilings - Large Hallway - Storage Room - Living Room - Kitchen, Bathroom - Two Double Bedrooms - Attractive Communal Gardens - Off Road Parking - Telephone Entry Maintenance Charge: £3314 PA (Includes grounds maintenance, outside of building maintenance, communal areas and insurance) Property Type: Apartment Full selling price: £279000.00 Pricing Options: Guide Price Tenure: Share of Freehold Council tax band: C EPC rating: D Measurement:1054.86 sq.ft. Outside Space: Communal Garden, Front Garden, Rear Garden Parking: Communal, Residents, Off-street Heating Type: Electric Heating, Oil Chain Sale or Chain Free: Chain Free Possession of the property: Self-occupied..



**Bed Room(s)**



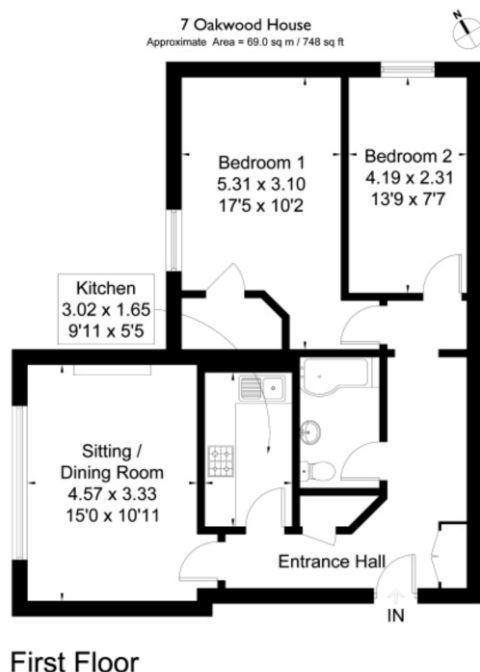
**Bath Room(s)**



**Living Room(s)**

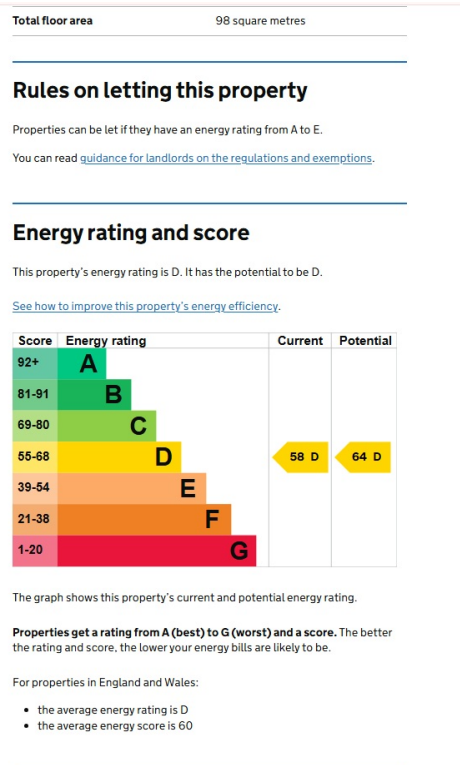
## FLOOR PLAN

Illustrations are for identification purposes only and are not to scale.  
All measurements are a maximum and include wardrobes and bay windows where applicable.



## EPC GRAPH

Illustrations are for identification purposes only and are not to scale.  
All measurements are a maximum and include wardrobes and bay windows where applicable.



**Disclaimer:** The information displayed about this property comprises a property advertisement. 99home.co.uk (/) will not make no warranty for the accuracy or completeness of the advertisement or any linked or associated information, and 99home has no control over the content. This property advertisement does not constitute property particulars, the property may offer to tenants in same condition as they have seen on time of the viewing. The information is provided and maintained by 99home.co.uk (/)

