

Office In 68-72 Rochester Place , Camden, NW1 9JX

£1,275 Monthly



## SHORT DESCRIPTION

Property Ref: 14931 A bright modern and private office, situated off Kentish Town Road. A very good sized private office room in a

nice office environment on the 1st floor. There is only one other private office in the building and the space on offer is circa 300 sq ft with plenty of windows and 24/7 access. It is probably large enough for approximately of 6 - 8 desks The office is on Rochester Place, which is a quaint cobblestone street that is approximately 7 minutes walk from Kentish Town Road Underground Station (Northern Line) and Kentish Town national rail station, 8 minutes walk to Camden Town Underground Station (Northern Line). Kentish Town Road West and Camden Road (Overground service) stations are a 3/4 minutes away. We can offer a flexible terms. The monthly rent covers service charge, business rates, and utilities (it does not cover the cost of setting up your own internet). THERE IS NO VAT TO PAY There is the use of a kitchen, sitting area and toilets which is shared with one other office. Property Type: Office Full Renting price: £1275.00 Pricing Options: Fixed Price EPC rating: C Measurement:300 sq.ft. Parking: No Parking Heating Type: Electric Heating -----

Bed Room(s)

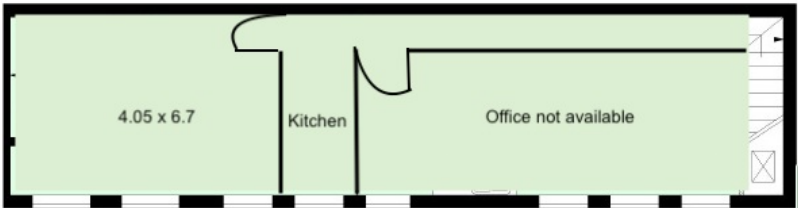
Bath Room(s)

0

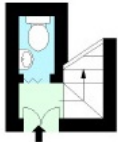
Living Room(s)

## FLOOR PLAN

Illustrations are for identification purposes only and are not to scale.  
All measurements are a maximum and include wardrobes and bay windows where applicable.



First Floor



Ground Floor Entrance

For Illustration Purposes Only - Not To Scale

## EPC GRAPH

Illustrations are for identification purposes only and are not to scale.  
All measurements are a maximum and include wardrobes and bay windows where applicable.

Property type	Offices and Workshop Businesses
Total floor area	109 square metres

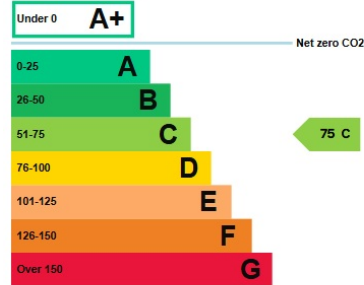
## Rules on letting this property

Properties can be let if they have an energy rating from A+ to E.

You can read [guidance for landlords on the regulations and exemptions](#).

## Energy rating and score

This property's energy rating is C.



Properties get a rating from A+ (best) to G (worst) and a score.

The better the rating and score, the lower your property's carbon emissions are likely to be.

**Disclaimer:** The information displayed about this property comprises a property advertisement. 99home.co.uk (/) will not make no warranty for the accuracy or completeness of the advertisement or any linked or associated information, and 99home has no control over the content. This property advertisement does not constitute property particulars, the property may offer to tenants in same condition as they have seen on time of the viewing. The information is provided and maintained by 99home.co.uk (/)

Company registration number in England : 10469887 VAT: 263 3023 36  
Copyright © 99Home Limited 2017. All rights reserved.