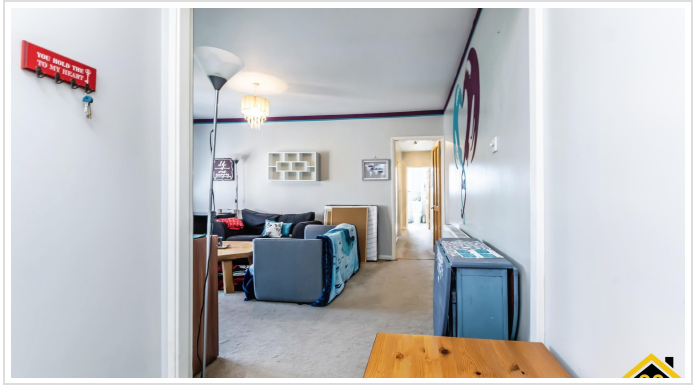


## 2 Bed Flat In Marlborough Court Croydon Road, Westerham, TN16 1EU

£1,300 Monthly







## SHORT DESCRIPTION

Property Ref- 15012 We are pleased to present this spacious and well-appointed 2 bedroom flat located at Marlborough Court, Croydon Road, Westerham, TN16. Situated in a sought-after area, this modern property is perfect for professionals or small families looking for a comfortable and convenient living space.. Key Features Two Generously Sized Bedrooms- Ideal for couples, small families, or housemates. Bright and Airy Living Room- A spacious living area offering ample natural light, perfect for relaxation and entertaining. Modern Fitted Kitchen- Equipped with all essential appliances, providing an efficient space for cooking. Contemporary Bathroom- Featuring modern fixtures and fittings, offering both style and comfort. Allocated Parking- Convenient off-road parking for residents. Well-Maintained Building- Set within a well-kept block, offering a peaceful and secure environment. Excellent Location- Situated in a prime location with easy access to local amenities, transport links, and nearby countryside for those who enjoy outdoor activities. The property is ideal for those seeking a comfortable and easy-to-maintain home with the added benefit of being within close proximity to Westerham village and its excellent amenities. Available for immediate let. Contact us to arrange a viewing.

2

Bed Room(s)

1

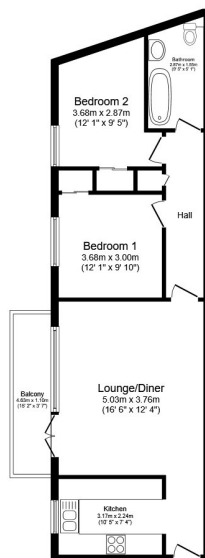
Bath Room(s)

1

Living Room(s)

## FLOOR PLAN

Illustrations are for identification purposes only and are not to scale.  
All measurements are a maximum and include wardrobes and bay windows where applicable.

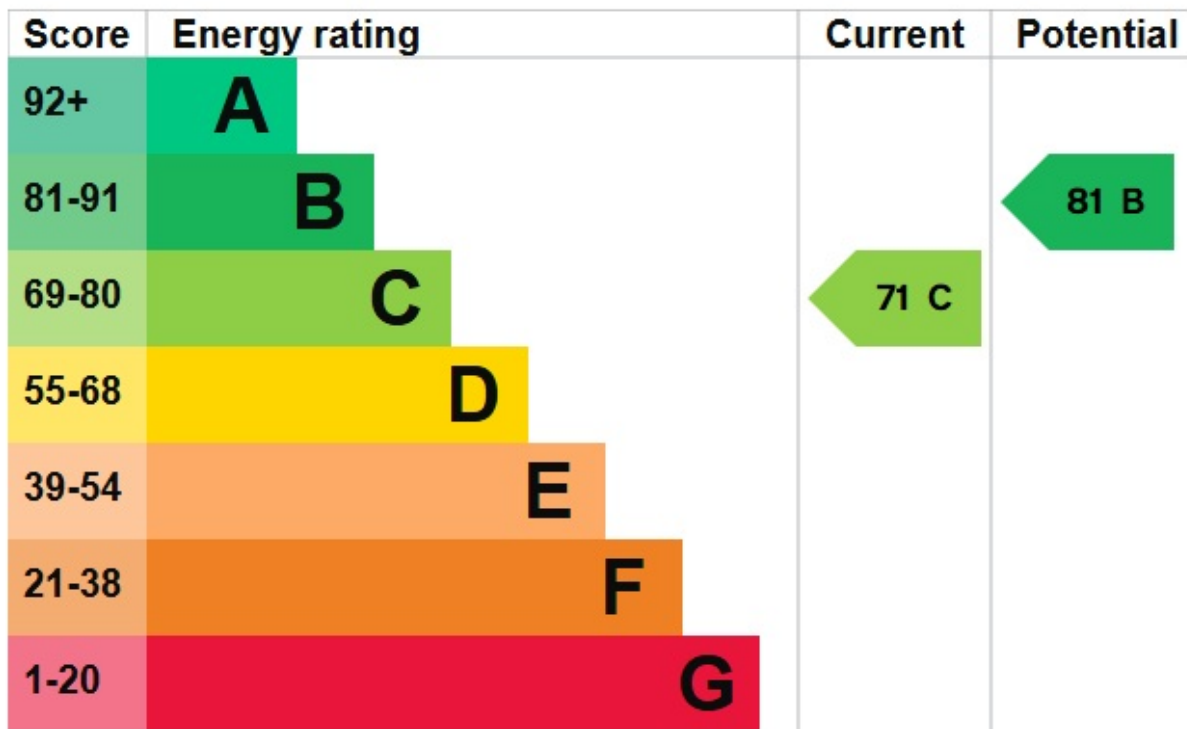


Total floor area 62.4 sq.m. (672 sq.ft.) approx

This floor plan is for illustrative purposes only. It is not drawn to scale. Any measurements, floor areas (including any total floor area), openings and orientation are approximate. No details are guaranteed, they cannot be relied upon for any purpose and they do not form part of any agreement. No liability is taken for any error, omission or misstatement. A party must rely upon its own inspection(s). Powered by [www.focalagent.com](http://www.focalagent.com)

# EPC GRAPH

Illustrations are for identification purposes only and are not to scale.  
All measurements are a maximum and include wardrobes and bay windows where applicable.



**Disclaimer:** The information displayed about this property comprises a property advertisement. 99home.co.uk (/) will not make no warranty for the accuracy or completeness of the advertisement or any linked or associated information, and 99home has no control over the content. This property advertisement does not constitute property particulars, the property may offer to tenants in same condition as they have seen on time of the viewing. The information is provided and maintained by 99home.co.uk (/)

Company registration number in England : 10469887 VAT: 263 3023 36  
Copyright © 99Home Limited 2017. All rights reserved.