

3 Bed Semi-Detached In Nightingale Road , Carshalton, SM5 2DN £530,000





SHORT DESCRIPTION

Property Ref: 15028 We are pleased to present an exceptional Semi-detached located at Nightingale Road, Carshalton, SM5. This wonderful residence boasts 3 bedrooms, 1 bathrooms, and 2 living rooms, offering ample space for comfortable living. Additionally, it features a fully-fitted kitchen, ideal for culinary enthusiasts, along with the convenience of a Front Garden, Rear Garden and On street parking. Positioned in a prime location, this property offers easy access to a range of local amenities and public transportation, ensuring convenience for residents. Its proximity to esteemed schools and a college enhances its appeal, providing families with access to excellent educational opportunities. This residence embodies the perfect blend of comfort, convenience, and quality living, making it an ideal choice for discerning individuals or families seeking a place to call home. -----

----- Beautiful 3 bedroom house. Key Features * No Chain * 3 Bedrooms * Living room * Dining Room and Office * Garden * Side Access * Close to Carshalton train Station * Close to Bus Routes
Property Type: Semi-detached Full selling price: £530000.00 Pricing Options: Offers in excess of Tenure: Freehold Council tax band: D EPC rating: D Measurement: 1044.1 sq.ft. Outside Space: Front Garden, Rear Garden Parking: On street Heating Type: Double Glazing, Gas Central Heating Chain Sale or Chain Free: Chain Free Possession of the property: Self-Occupied....

3

Bed Room(s)

1

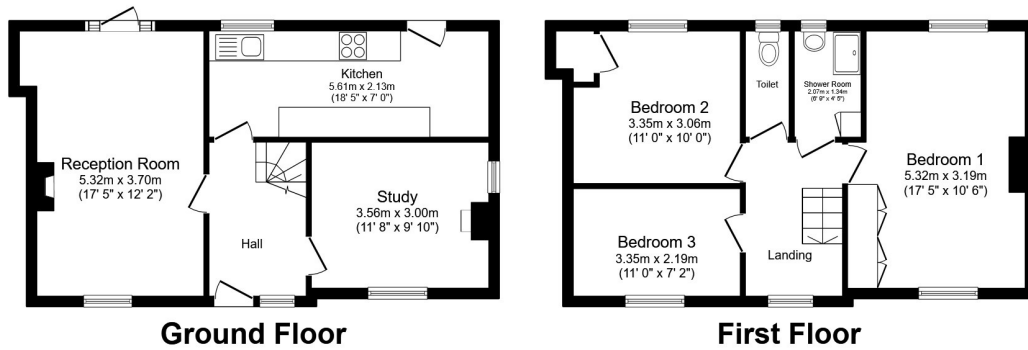
Bath Room(s)

2

Living Room(s)

FLOOR PLAN

Illustrations are for identification purposes only and are not to scale.
All measurements are a maximum and include wardrobes and bay windows where applicable.



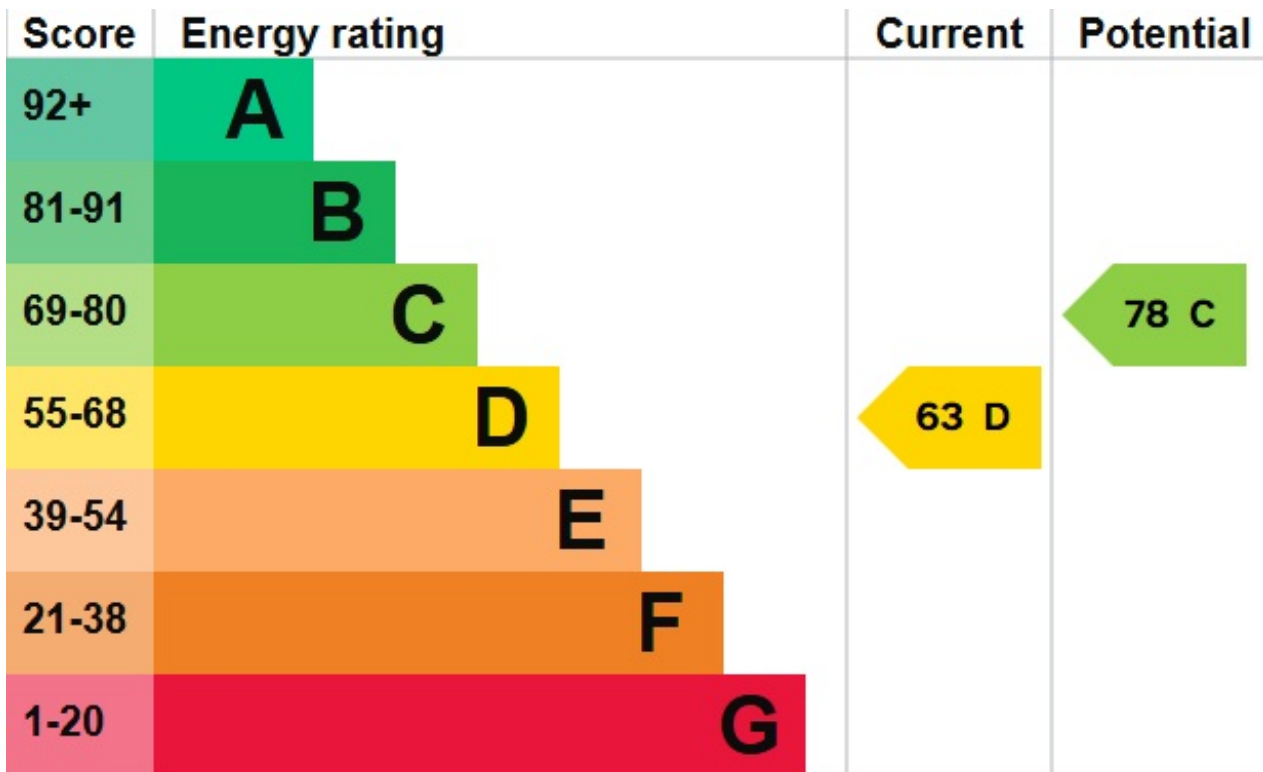
Total floor area 95.9 sq.m. (1,032 sq.ft.) approx

This floor plan is for illustrative purposes only. It is not drawn to scale. Any measurements, floor areas (including any total floor area), openings and orientation are approximate. No details are guaranteed, they cannot be relied upon for any purpose and they do not form part of any agreement. No liability is taken for any error, omission or misstatement. A party must rely upon its own inspection(s). Powered by www.focalagent.com

EPC GRAPH

Illustrations are for identification purposes only and are not to scale.

All measurements are a maximum and include wardrobes and bay windows where applicable.



Disclaimer: The information displayed about this property comprises a property advertisement. 99home.co.uk (/) will not make no warranty for the accuracy or completeness of the advertisement or any linked or associated information, and 99home has no control over the content. This property advertisement does not constitute property particulars, the property may offer to tenants in same condition as they have seen on time of the viewing. The information is provided and maintained by 99home.co.uk (/)

