

## 6 Bed Detached In Thurso Cres , Bishopton, PA7 5GH

£499,900





## SHORT DESCRIPTION

Property Ref: 15035 Exceptional 6-Bedroom Smart Home in Walk-In Condition – Thurso Crescent , Dargavel Village, Bishopton

This is not just a house—it's a state-of-the-art family home in walk-in condition, offering the perfect blend of luxury, technology, and style. Set in a peaceful corner of the sought-after Dargavel Village, this 6-bedroom detached property has been upgraded to the highest standard throughout, with over 2,100 sq ft of beautifully designed living space. From smart tech to stunning outdoor spaces, every detail has been considered to create a home that's as functional as it is impressive. The home features five generous double bedrooms, two of which benefit from sleek en-suite shower rooms. A sixth bedroom offers flexibility as a guest room, nursery, or dedicated home office. The stylish main bathroom includes a bath, and there is a convenient downstairs WC. At the heart of the home is a contemporary open-plan kitchen, dining, and lounge area with bi-fold doors that open onto the garden—perfect for entertaining or relaxing with family. A spacious separate family room to the front provides a utility room and convenient WC complete the ground floor. This home is equipped with full smart home integration, allowing you to control lighting, heating, and security from your phone. The Nest multi-zone heating system ensures energy-efficient comfort, while solar panels and an EV charger support sustainable living. A high-spec alarm system with vibration sensors on every window and door provides peace of mind. The outdoor space has been thoughtfully designed with a fully landscaped rear garden, privacy fencing, a large composite deck, and a stunning tiled patio—ideal for summer gatherings. Outdoor electrical points and smart garden lighting add both convenience and ambience. The front of the property features a 3-car high quality block driveway with smart lighting along both sides, enhancing kerb appeal and functionality. Bishopton is a thriving village in Renfrewshire, offering a fantastic balance of countryside charm and urban convenience. Dargavel Village is one of the area's most sought-after developments, known for its family-friendly atmosphere, green spaces, and excellent transport links. Bishopton train station provides direct access to Glasgow City Centre in under 20 minutes, while the M8 and Glasgow Airport are just a short drive away. The area boasts highly regarded schools, local shops, cafes, and scenic walking routes along the River Clyde and nearby countryside. Whether you're commuting, raising a family, or simply looking for a peaceful place to call home, Bishopton delivers. This home is utterly beautiful and truly one of a kind. Viewing is highly recommended, Home Report available on request.

Property Type- Detached Full selling price- £499900.00 Pricing Options- Offers in excess of Tenure- Freehold Council tax band- G EPC rating- C Measurement- 2206.6 sq.ft. Outside Space- Rear Garden, Patio Parking- Driveway Heating Type- Double Glazing, Gas Central Heating Chain Sale or Chain Free- Chain Free Possession of the property- Self-occupied -----

6

Bed Room(s)

4

Bath Room(s)

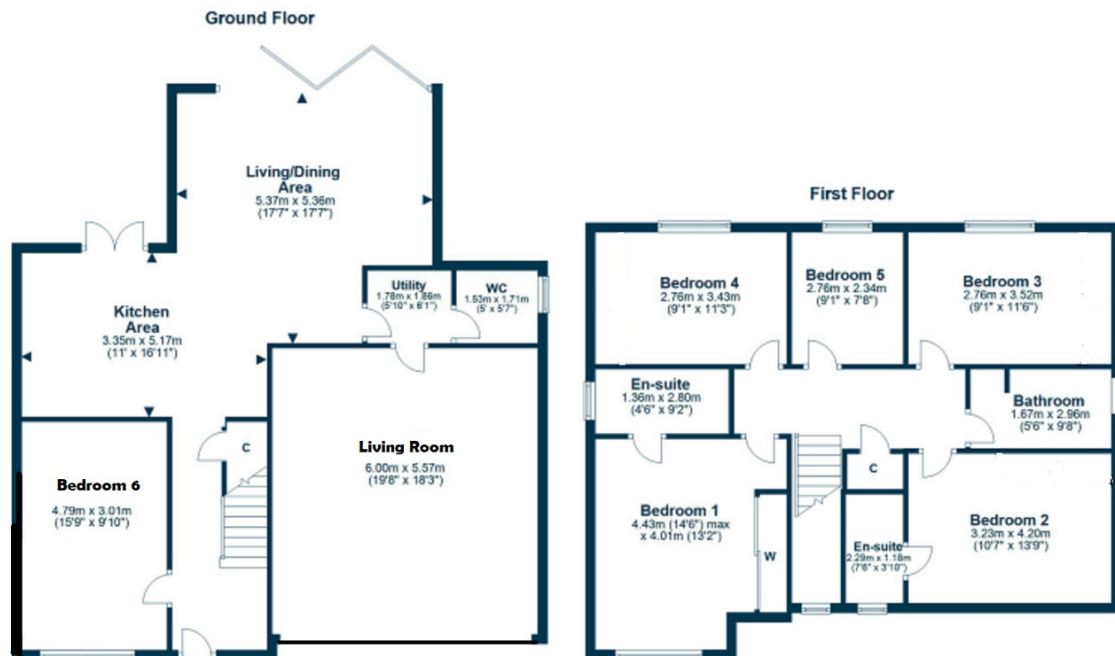
2

Living Room(s)

## FLOOR PLAN

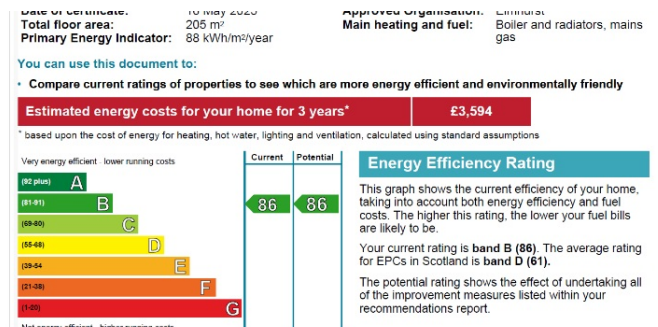
Illustrations are for identification purposes only and are not to scale.  
All measurements are a maximum and include wardrobes and bay windows where applicable.



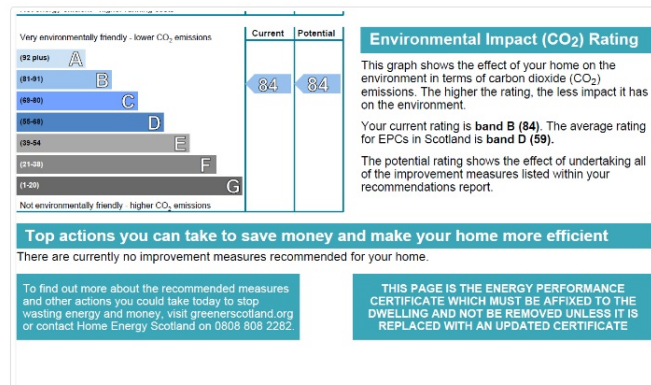


## EPC GRAPH

Illustrations are for identification purposes only and are not to scale.  
All measurements are a maximum and include wardrobes and bay windows where applicable.



### EPC Graphs



**Disclaimer:** The information displayed about this property comprises a property advertisement. 99home.co.uk (/) will not make no warranty for the accuracy or completeness of the advertisement or any linked or associated information, and 99home has no control over the content. This property advertisement does not constitute property particulars, the property may offer to tenants in same condition as they have seen on time of the viewing. The information is provided and maintained by 99home.co.uk (/)

