



99Home Ltd.

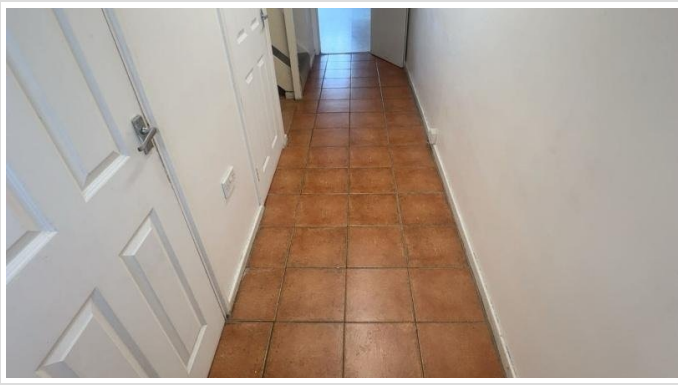
99Home Ltd,
Sutton Business Centre,
Restmor Way,
Wallington,
SM6 7AH,
Phone :0203 5000 999
Email
:info@99home.co.uk

3 Bed Terraced In Tynemouth Close Heaton, Newcastle Upon Tyne, NE6 1XR
£150,000



Ref:15057





SHORT DESCRIPTION

Property Ref: 15057 We are pleased to present an exceptional three-bedroom terraced house located at Tynemouth Close, Heaton, Newcastle upon Tyne, NE6. This wonderful residence boasts three bedrooms, two bathrooms, and a separate living room, offering ample space for comfortable family living arranged over three floors. Additionally, it features a fitted kitchen, ideal for culinary enthusiasts, along with the convenience of permit holders' parking (bays off the main road) and a pleasant rear garden. Positioned in a prime location, this property offers easy access to a range of local amenities and public transportation, including the nearby Metro station, ensuring convenience for residents. It is also situated with schools and a college within easy reach. This residence embodies the perfect blend of comfort, convenience, and quality living, making it an ideal choice for individuals or families seeking a place to call home. Early viewing is highly recommended to appreciate the space and location on offer. Property Type: Terraced Full Selling price: £150000.00 Pricing Options: Offers in the region of Tenure: Freehold Council tax band: A EPC rating: C Measurement: 1087.15 sq.ft. Outside Space: Rear Garden, Enclosed Garden Parking: Permit, On street Heating Type: Gas Central Heating Chain Sale or Chain Free: Chain free Possession of the property: Vacant -----

3

Bed Room(s)

2

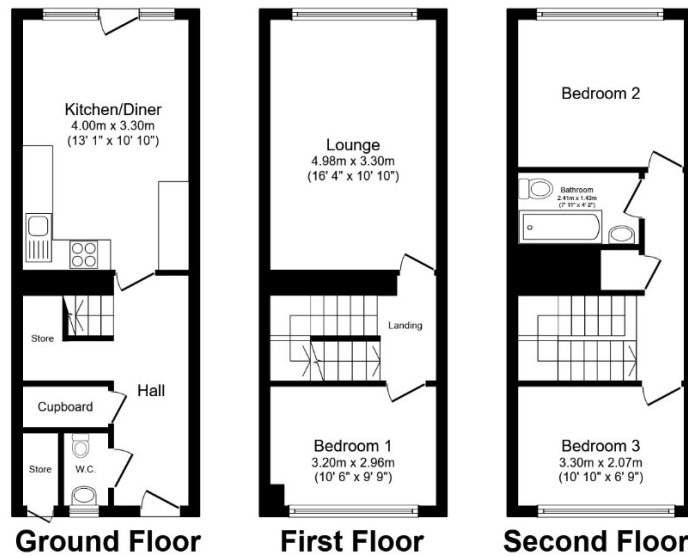
Bath Room(s)

1

Living Room(s)

FLOOR PLAN

Illustrations are for identification purposes only and are not to scale.
All measurements are a maximum and include wardrobes and bay windows where applicable.



Total floor area 95.5 sq.m. (1,028 sq.ft.) approx

This floor plan is for illustrative purposes only. It is not drawn to scale. Any measurements, floor areas (including any total floor area), openings and orientation are approximate. No details are guaranteed, they cannot be relied upon for any purpose and they do not form part of any agreement. No liability is taken for any error, omission or misstatement. A party must rely upon its own inspection(s).

EPC GRAPH

Illustrations are for identification purposes only and are not to scale.
All measurements are a maximum and include wardrobes and bay windows where applicable.

Property type	Mid-terrace house
Total floor area	101 square metres

Rules on letting this property

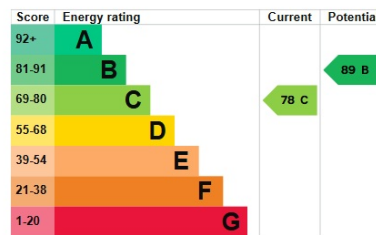
Properties can be let if they have an energy rating from A to E.

You can read [guidance for landlords on the regulations and exemptions](#).

Energy rating and score

This property's energy rating is C. It has the potential to be B.

[See how to improve this property's energy efficiency](#).



The graph shows this property's current and potential energy rating.

Properties get a rating from A (best) to G (worst) and a score. The better the rating and score, the lower your energy bills are likely to be.

For properties in England and Wales:

- the average energy rating is D
- the average energy score is 60

Disclaimer: The information displayed about this property comprises a property advertisement. 99home.co.uk (/) will not make no warranty for the accuracy or completeness of the advertisement or any linked or associated information, and 99home has no control over the content. This property advertisement does not constitute property particulars, the property may offer to tenants in same condition as they have seen on time of the viewing. The information is provided and maintained by 99home.co.uk (/)

