

2 Bed Bungalow In Moat Hills Court, Bentley, DN5 0DS

£80,500





SHORT DESCRIPTION

Property Ref: 15107 We are pleased to present an exceptional Bungalow located at Moat Hills Court, Bentley, DN5. This wonderful residence boasts 2 bedrooms, 1 bathroom, and 1 living room, offering ample space for comfortable living. Additionally, it features a fully-fitted kitchen, ideal for culinary enthusiasts, along with convenience and Parking. Positioned in a prime location, this property offers easy access to a range of local amenities and public transportation, ensuring convenience for residents. Its proximity to esteemed schools and a college enhances its appeal, providing families with access to excellent educational opportunities. This residence embodies the perfect blend of comfort, convenience, and quality living, making it an ideal choice for discerning individuals or families seeking a place to call home. Discover your perfect retirement sanctuary with this charming and well-maintained 2-bedroom bungalow located in the peaceful Moat Hills Court, Bentley. Designed exclusively for over 55's, this property offers a tranquil and private sanctuary, perfect for those seeking an easy and convenient lifestyle. Nestled in a great private location next to Bentley Park, this retirement bungalow ensures a tranquil and pleasant atmosphere for its residents. With easy access to beautiful green spaces for leisurely strolls and ample outdoor activities, this location allows you to enjoy the best of both worlds - peaceful surroundings and close proximity to essential amenities & buses. Property Type: Bungalow Full selling price: £115000.00 Pricing Options: Shared ownership Tenure: Leasehold Percentage to be sold: 70% Share price: £80500.00 Monthly rent based on 70% share: £0 Remaining lease (In Years): 64 Yearly Ground Rent Cost: £0.00 Yearly Management Cost: £980.64 Council tax band: A EPC rating: C Measurement: Bedrooms, Bathrooms, and Living Room Outside Space: Communal Garden Parking: Driveway Heating Type: Gas Central Heating Possession of the property: Occupied

2

Bed Room(s)

1

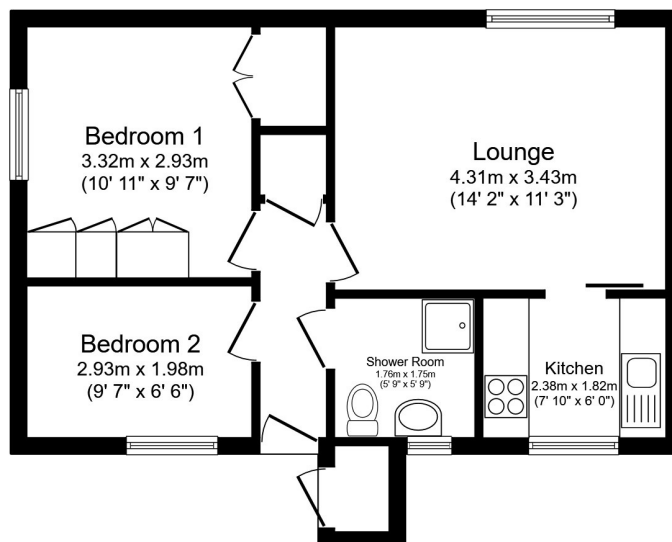
Bath Room(s)

1

Living Room(s)

FLOOR PLAN

Illustrations are for identification purposes only and are not to scale.
All measurements are a maximum and include wardrobes and bay windows where applicable.



Total floor area 45.3 sq.m. (488 sq.ft.) approx

This floor plan is for illustrative purposes only. It is not drawn to scale. Any measurements, floor areas (including any total floor area), openings and orientation are approximate. No details are guaranteed, they cannot be relied upon for any purpose and they do not form part of any agreement. No liability is taken for any error, omission or misstatement. A party must rely upon its own inspection(s). Powered by www.focalagent.com

EPC GRAPH

Illustrations are for identification purposes only and are not to scale.
All measurements are a maximum and include wardrobes and bay windows where applicable.

Score	Energy rating	Current	Potential
92+	A		
81-91	B		90 B
69-80	C	71 C	
55-68	D		
39-54	E		
21-38	F		
1-20	G		

Disclaimer: The information displayed about this property comprises a property advertisement. 99home.co.uk (/) will not make no warranty for the accuracy or completeness of the advertisement or any linked or associated information, and 99home has no control over the content. This property advertisement does not constitute property particulars, the property may offer to tenants in same condition as they have seen on time of the viewing. The information is provided and maintained by 99home.co.uk (/)

