

1 Bed Apartment In Cloakham Drive , Axminster, EX13 5GS

£38,750





SHORT DESCRIPTION

Property Ref: 15111 We are pleased to present an exceptional Apartment located at Cloakham Drive, Axminster, EX13. This wonderful residence boasts 1 bedroom, 1 bathroom, and 1 living room, offering ample space for comfortable living. Additionally, it features a fully-fitted kitchen, ideal for culinary enthusiasts, along with the convenience of a Communal Garden and allocated parking. Positioned in a prime location, this property offers easy access to a range of local amenities and public transportation, ensuring convenience for residents. Its proximity to esteemed schools and a college enhances its appeal, providing families with access to excellent educational opportunities. This residence embodies the perfect blend of comfort, convenience, and quality living, making it an ideal choice for discerning individuals or families seeking a place to call home. Property Type: Apartment Full selling price: £155000.00 Pricing Options: Shared ownership Tenure: Leasehold Percentage to be sold: 25% Share price: £38750.00 Monthly rent based on 25% share: £324.65 Remaining lease (In Years): 245 Yearly Ground Rent Cost: £0.00 Yearly Management Cost: £1084.56 Council tax band: B EPC rating: B Measurement: Bedrooms, Bathrooms and Living room Outside Space: Communal Garden Parking: Allocated Heating Type: Gas Central Heating Possession of the property: Occupied

1

Bed Room(s)

1

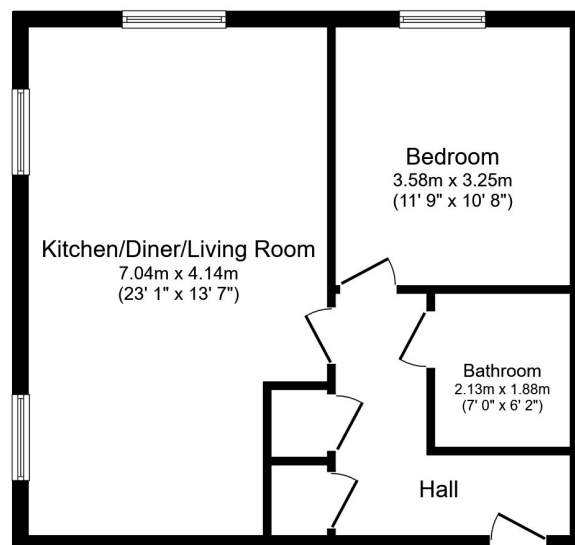
Bath Room(s)

1

Living Room(s)

FLOOR PLAN

Illustrations are for identification purposes only and are not to scale.
All measurements are a maximum and include wardrobes and bay windows where applicable.

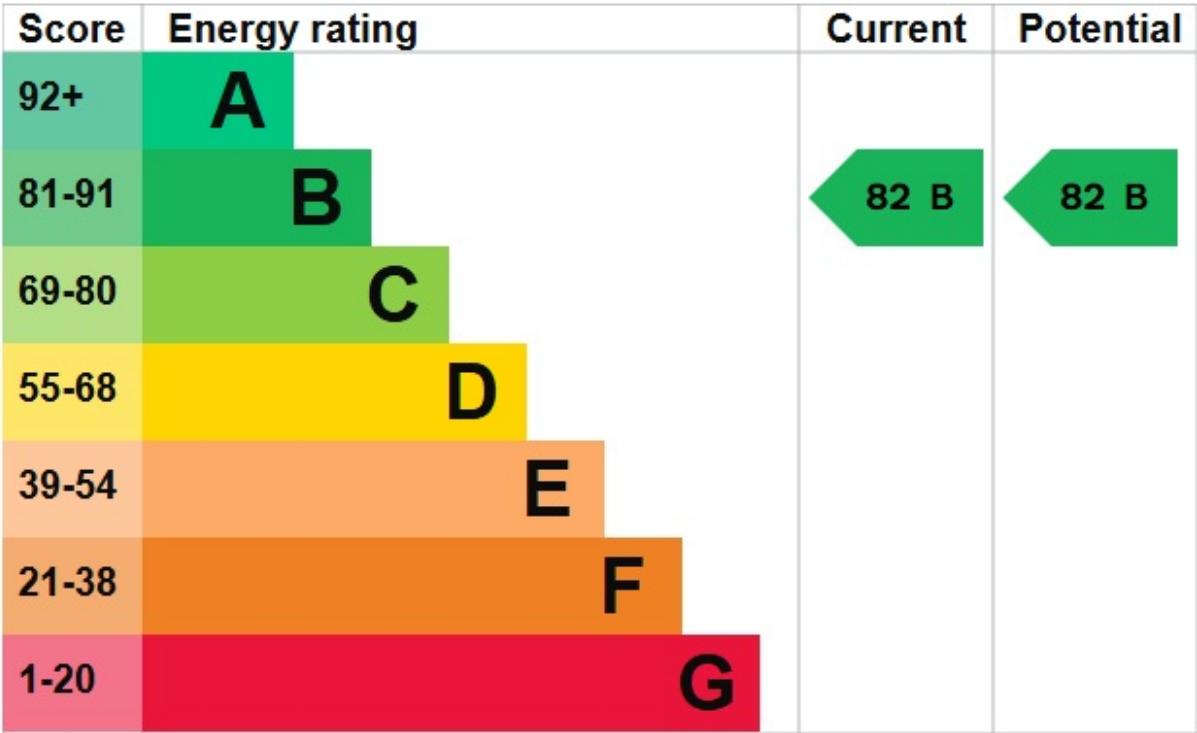


Total floor area 52.7 sq.m. (567 sq.ft.) approx

This floor plan is for illustrative purposes only. It is not drawn to scale. Any measurements, floor areas (including any total floor area), openings and orientation are approximate. No details are guaranteed, they cannot be relied upon for any purpose and they do not form part of any agreement. No liability is taken for any error, omission or misstatement. A party must rely upon its own inspection(s). Powered by www.focalagent.com

EPC GRAPH

Illustrations are for identification purposes only and are not to scale.
All measurements are a maximum and include wardrobes and bay windows where applicable.



Disclaimer: The information displayed about this property comprises a property advertisement. 99home.co.uk (/) will not make no warranty for the accuracy or completeness of the advertisement or any linked or associated information, and 99home has no control over the content. This property advertisement does not constitute property particulars, the property may offer to tenants in same condition as they have seen on time of the viewing. The information is provided and maintained by 99home.co.uk (/)