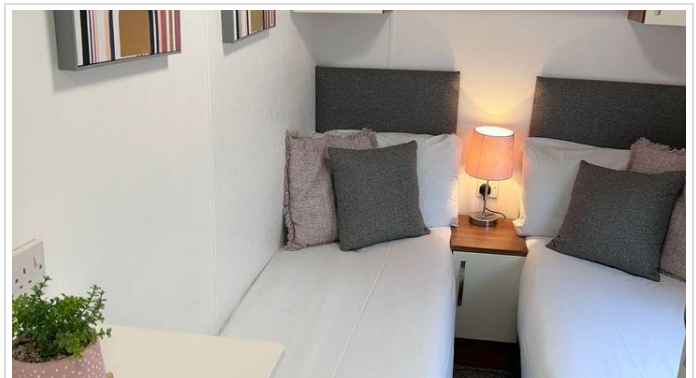
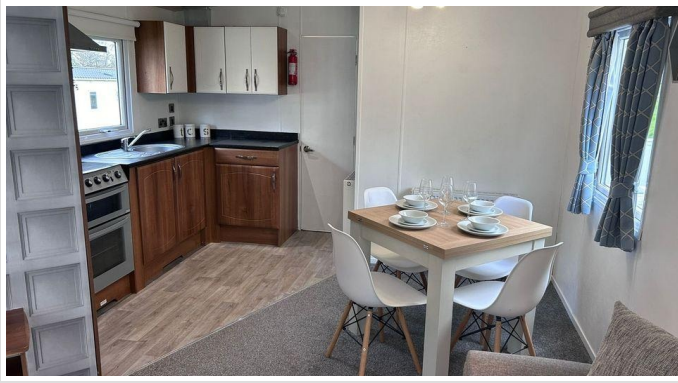


2 Bed Park Home In Hanford Nature Holiday Park , Harwich, CO12 3TA

£450 Monthly





SHORT DESCRIPTION

Property Ref: 15146 This is an ownership opportunity, paid monthly – not a rental. We're excited to present this beautiful 2-bedroom static caravan available through a monthly payment plan towards full ownership, located on a sought-after park in the Harwich or Dovercourt area of Essex. Ideally placed for access to the Essex coastline, with nearby beaches, local shops, and family attractions. This is not a short-term rental — each payment goes towards owning your caravan outright, giving you the freedom and flexibility that comes with being an owner. The caravan features: Double glazing and central heating throughout Fully fitted kitchen Spacious bathroom Comfort and convenience in a peaceful, coastal setting The advertised price reflects the monthly repayment plan. Site fees and utilities are additional, but site fees for the 2025 season are included. There's also no council tax to pay. Why choose ownership? Build something of your own instead of wasting money on rent Personalise your space however you like Sublet when you're not using it to help cover costs Part-exchange or sell privately in future Additional benefits: No stamp duty No solicitor fees Flexible deposit options (cash, credit, or debit card accepted) Applicants must be over 25, eligible for finance, and able to pass a credit check — we offer free, no-obligation soft checks over the phone. We also have a variety of other models available in the area — 2- and 3-bedroom caravans in different layouts and price points. Get in touch to book a viewing or find out more today! Property Type: Park Home Full Renting price: £450.00 Pricing Options: Fixed Price Tenure: 11.5 months Outside Space: Rear Garden Parking: Communal Heating Type: Gas Central Heating -----

2

Bed Room(s)

1

Bath Room(s)

1

Living Room(s)

FLOOR PLAN

Illustrations are for identification purposes only and are not to scale.
All measurements are a maximum and include wardrobes and bay windows where applicable.

EPC GRAPH

Illustrations are for identification purposes only and are not to scale.
All measurements are a maximum and include wardrobes and bay windows where applicable.

Disclaimer: The information displayed about this property comprises a property advertisement. 99home.co.uk (/) will not make no warranty for the accuracy or completeness of the advertisement or any linked or associated information, and 99home has no control over the content. This property advertisement does not constitute property particulars, the property may offer to tenants in same condition as they have seen on time of the viewing. The information is provided and maintained by 99home.co.uk (/)