

2 Bed Apartment In Nathaniel Close , Sarisbury Green, SO31 7NT £98,000





SHORT DESCRIPTION

Property Ref: 15159 We are pleased to present an exceptional Apartment located at Nathaniel Close, Sarisbury Green, SO31. This wonderful residence boasts 2 bedrooms, 1 bathroom, and 1 living room, offering ample space for comfortable living. Additionally, it features a fully-fitted kitchen, ideal for culinary enthusiasts, along with convenience and Allocated parking. Positioned in a prime location, this property offers easy access to a range of local amenities and public transportation, ensuring convenience for residents. Its proximity to esteemed schools and a college enhances its appeal, providing families with access to excellent educational opportunities. This residence embodies the perfect blend of comfort, convenience, and quality living, making it an ideal choice for discerning individuals or families seeking a place to call home. The shopping centre is a ten-minute walk away and next to a good secondary school. Beautiful woodland walks nearby... Property Type: Apartment Full selling price: £245000.00 Pricing Options: Shared ownership Tenure: Leasehold Percentage to be sold: 40% Share price: £98000.00 Monthly rent based on 40% share: £365.08 Remaining lease (In Years): 114 Yearly Ground Rent Cost: £0.00 Yearly Management Cost: £937.32 Council tax band: C EPC rating: C Measurement: Bedrooms, Bathrooms and Living room Possession of the property: Occupied

2

Bed Room(s)

1

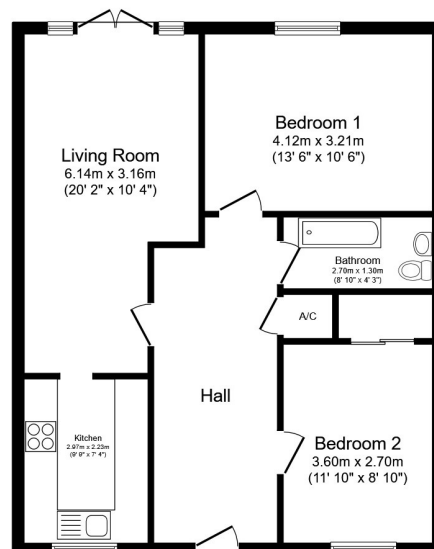
Bath Room(s)

1

Living Room(s)

FLOOR PLAN

Illustrations are for identification purposes only and are not to scale.
All measurements are a maximum and include wardrobes and bay windows where applicable.

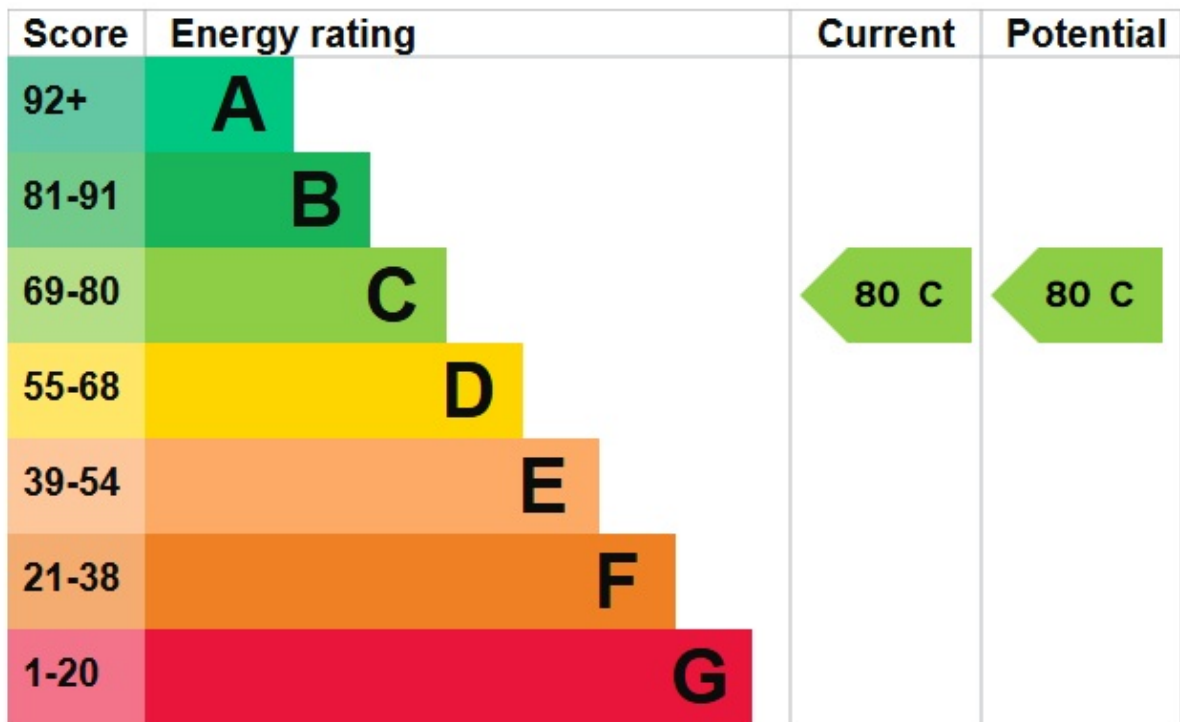


Total floor area 68.0 sq.m. (732 sq.ft.) approx

This floor plan is for illustrative purposes only. It is not drawn to scale. Any measurements, floor areas (including any total floor area), openings and orientation are approximate. No details are guaranteed, they cannot be relied upon for any purpose and they do not form part of any agreement. No liability is taken for any error, omission or misstatement. A party must rely upon its own inspection(s). Powered by www.focalagent.com

EPC GRAPH

Illustrations are for identification purposes only and are not to scale.
All measurements are a maximum and include wardrobes and bay windows where applicable.



Disclaimer: The information displayed about this property comprises a property advertisement. 99home.co.uk (/) will not make no warranty for the accuracy or completeness of the advertisement or any linked or associated information, and 99home has no control over the content. This property advertisement does not constitute property particulars, the property may offer to tenants in same condition as they have seen on time of the viewing. The information is provided and maintained by 99home.co.uk (/)

Company registration number in England : 10469887 VAT: 263 3023 36
Copyright © 99Home Limited 2017. All rights reserved.