

4 Bed Detached In Abbey Close Curry Rivel, Langport, TA10 0EL £479,000







## SHORT DESCRIPTION

Property Ref: 15316 FOUR BEDROOM DETACHED FAMILY HOME, RENOVATED THROUGHOUT, PARKING FOR FIVE CARS, SPACIOUS ENSUITE, HOME OFFICE POTENTIAL Beautifully updated detached home in a quiet cul-de-sac in sought-after Curry Rivel. Features include a new boiler and oil tank, new double glazing, wood flooring, new carpets upstairs, and a stylish downstairs WC. The property offers four bedrooms, three doubles, one single, including a master with en-suite. The spacious kitchen diner has a utility room. Additional highlights include a large lounge with wood burner that opens onto a private rear garden via patio doors. Garage, and an outbuilding with power - ideal as an office or studio. Driveway parking for up to five cars. Located close to local schools, Langport town, and excellent road links to Taunton, Yeovil, Bridgwater, and the A303. A turn-key family home with space and flexibility. Property Type: Detached Full selling price: £479000.00 Pricing Options: Offers in excess of Tenure: Freehold Council tax band: E EPC rating: D Measurement:1485.42 sq.ft. Outside Space: Front Garden, Rear Garden, Enclosed Garden Parking: Garage, Driveway, Off street Heating Type: Double Glazing, Oil Chain sale Possession of the property: Self-Occupied -----

4

Bed Room(s)

2

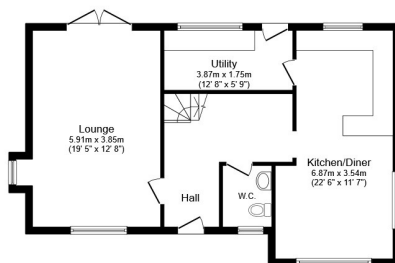
Bath Room(s)

1

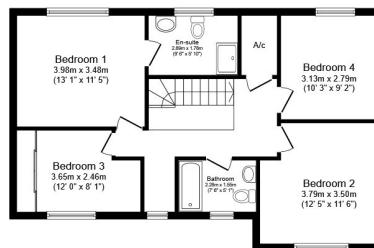
Living Room(s)

## FLOOR PLAN

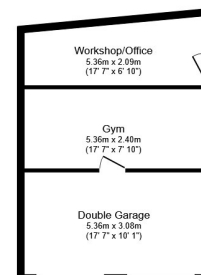
Illustrations are for identification purposes only and are not to scale.  
All measurements are a maximum and include wardrobes and bay windows where applicable.



Ground Floor



First Floor



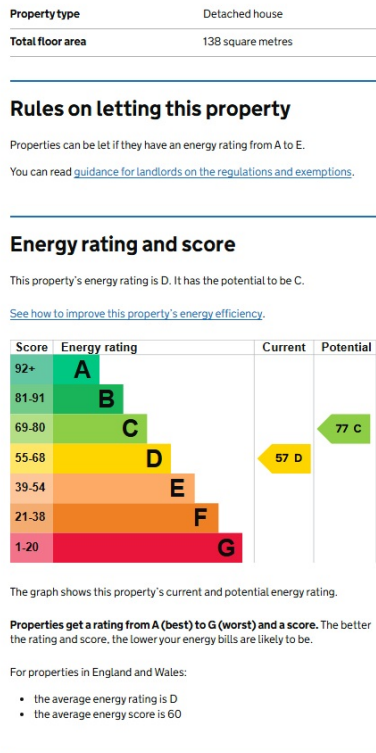
Outbuilding

Total floor area 175.6 sq.m. (1,890 sq.ft.) approx

This floor plan is for illustrative purposes only. It is not drawn to scale. Any measurements, floor areas (including any total floor area), openings and orientation are approximate. No details are guaranteed, they cannot be relied upon for any purpose and they do not form part of any agreement. No liability is taken for any error, omission or misstatement. A party must rely upon its own inspection(s). Powered by [www.focalagent.com](http://www.focalagent.com)

# EPC GRAPH

Illustrations are for identification purposes only and are not to scale.  
All measurements are a maximum and include wardrobes and bay windows where applicable.



**Disclaimer:** The information displayed about this property comprises a property advertisement. 99home.co.uk (/) will not make no warranty for the accuracy or completeness of the advertisement or any linked or associated information, and 99home has no control over the content. This property advertisement does not constitute property particulars, the property may offer to tenants in same condition as they have seen on time of the viewing. The information is provided and maintained by 99home.co.uk (/)

Company registration number in England : 10469887 VAT: 263 3023 36  
Copyright © 99Home Limited 2017. All rights reserved.