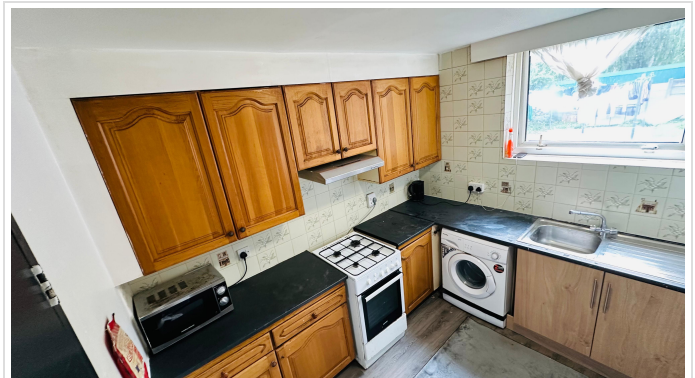


3 Bed Flat In Tomlins Orchard , Barking, IG11 7LR

£270,000





SHORT DESCRIPTION

Property Ref: 15355 Discover this beautifully presented 3-bedroom apartment offering comfort, space, and convenience in the heart of Barking. * Key Features: Spacious Living Room – Bright and airy, ideal for relaxing or entertaining Three Generously Sized Bedrooms – Perfect for families or sharers Separate Fitted Kitchen – Well-appointed and functional Modern Design – Thoughtfully laid out with a calm, elegant finish Peaceful & Safe Neighborhood – A friendly and welcoming community * Prime Location: Just moments from Barking Station – Excellent transport links to Central London Walking distance to Barking Town Centre, shops, schools & amenities Whether you're a first-time buyer, growing family, or savvy investor, this property ticks all the boxes. Property Type: Flat Full selling price: £270000.00 Pricing Options: Guide Price Tenure: Leasehold Remaining lease (In Year): 86 Yearly Ground Rent Cost: £300.00 Yearly Management Cost: £500.00 Council tax band: B EPC rating: C Measurement: 850.349 Outside Space: Communal Garden Parking: Off street Heating Type: Gas Central Heating Chain Free or Chain sale:Chain free -----

3

Bed Room(s)

1

Bath Room(s)

1

Living Room(s)

FLOOR PLAN

Illustrations are for identification purposes only and are not to scale.
All measurements are a maximum and include wardrobes and bay windows where applicable.

EPC GRAPH

Illustrations are for identification purposes only and are not to scale.
All measurements are a maximum and include wardrobes and bay windows where applicable.

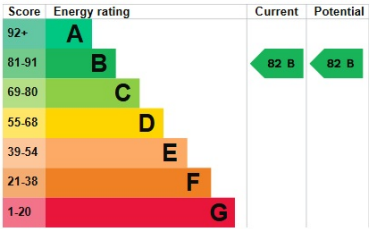
Property type	Mid-floor flat
Total floor area	59 square metres

Rules on letting this property

Properties can be let if they have an energy rating from A to E.
You can read [guidance for landlords on the regulations and exemptions](#).

Energy rating and score

This property's energy rating is B. It has the potential to be B.
[See how to improve this property's energy efficiency](#).



The graph shows this property's current and potential energy rating.

Properties get a rating from A (best) to G (worst) and a score. The better the rating and score, the lower your energy bills are likely to be.

For properties in England and Wales:

- the average energy rating is D
- the average energy score is 60

Disclaimer: The information displayed about this property comprises a property advertisement. 99home.co.uk (/) will not make no warranty for the accuracy or completeness of the advertisement or any linked or associated information, and 99home has no control over the content. This property advertisement does not constitute property particulars, the property may offer to tenants in same condition as they have seen on time of the viewing. The information is provided and maintained by 99home.co.uk (/)