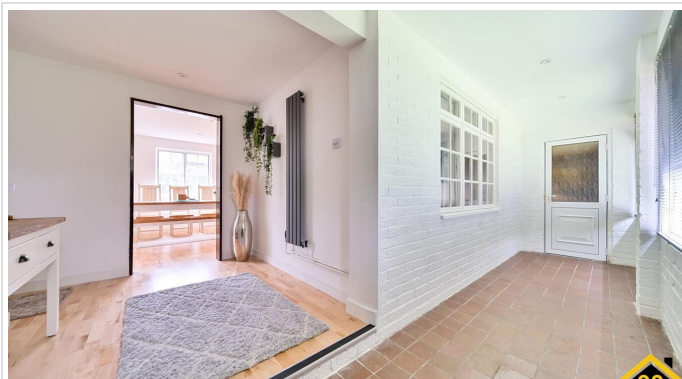


4 Bed Detached Bungalow In Lambourne Close , Thruxton, Andover, SP11 8LS  
£550,000





## SHORT DESCRIPTION

Property Ref: 15432 \* Great Location Superb connections: A303, M3, A34 just minutes away Peaceful setting with breathtaking countryside walks on your doorstep Only 10 mins to Andover or Grateley stations – direct fast trains to London Waterloo \* Great Property Stylishly renovated to a high standard throughout Light-filled, flowing open-plan living spaces 4 bedrooms, 2 very generous with private ensuites Single-level living – perfect for forever home Oversized double garage + driveway for 4–6 vehicles Total privacy on all boundaries \* Great Price Street sales in the last 24 months: £500k–£750k Lower-priced homes needed substantial renovation – this one's move-in ready! Property Type: Detached Bungalow Full selling price: £550000.00 Pricing Options: Offers in excess of Tenure: Freehold Council tax band:F EPC rating: D Measurement: 1463.89 sq.ft. Outside Space: Front Garden, Patio Parking: Garage, Driveway, Private, Off street Heating Type: Solar Powered, Double Glazing, Oil Chain Sale or Chain Free: NA Possession of the property: Self-occupied -----

4

Bed Room(s)

3

Bath Room(s)

1

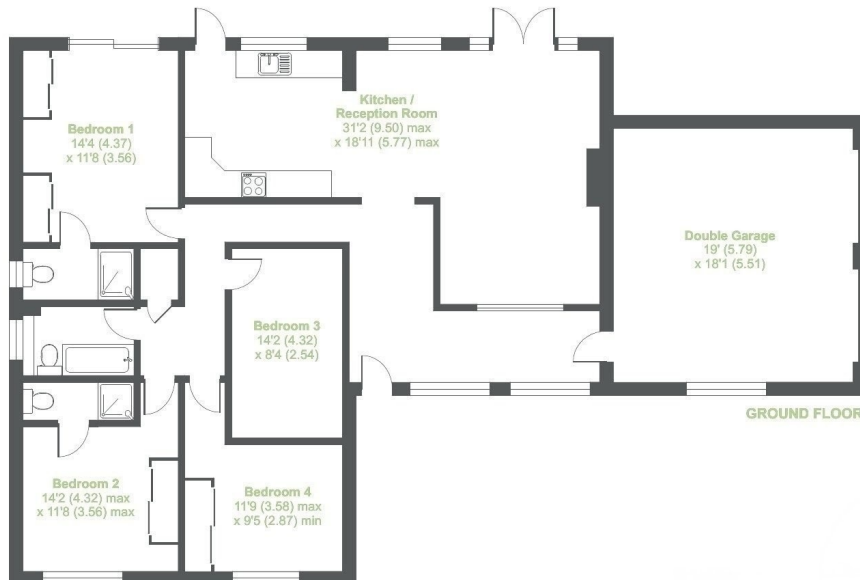
Living Room(s)

## FLOOR PLAN

Illustrations are for identification purposes only and are not to scale.  
All measurements are a maximum and include wardrobes and bay windows where applicable.

**Lambourne Close, Thruxton, Andover, SP11**

Approximate Area = 1758 sq ft / 163.3 sq m  
For identification only - Not to scale



# EPC GRAPH

Illustrations are for identification purposes only and are not to scale.  
All measurements are a maximum and include wardrobes and bay windows where applicable.

|                  |                   |
|------------------|-------------------|
| Property type    | Detached bungalow |
| Total floor area | 136 square metres |

## Rules on letting this property

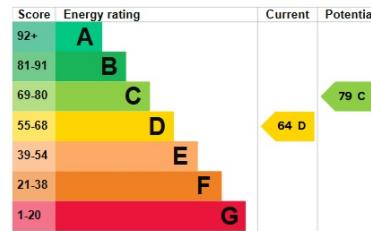
Properties can be let if they have an energy rating from A to E.

You can read [guidance for landlords on the regulations and exemptions](#).

## Energy rating and score

This property's energy rating is D. It has the potential to be C.

[See how to improve this property's energy efficiency.](#)



The graph shows this property's current and potential energy rating.

**Properties get a rating from A (best) to G (worst) and a score.** The better the rating and score, the lower your energy bills are likely to be.

For properties in England and Wales:

- the average energy rating is D
- the average energy score is 60

**Disclaimer:** The information displayed about this property comprises a property advertisement. 99home.co.uk (/) will not make no warranty for the accuracy or completeness of the advertisement or any linked or associated information, and 99home has no control over the content. This property advertisement does not constitute property particulars, the property may offer to tenants in same condition as they have seen on time of the viewing. The information is provided and maintained by 99home.co.uk (/)

Company registration number in England : 10469887 VAT: 263 3023 36  
Copyright © 99Home Limited 2017. All rights reserved.