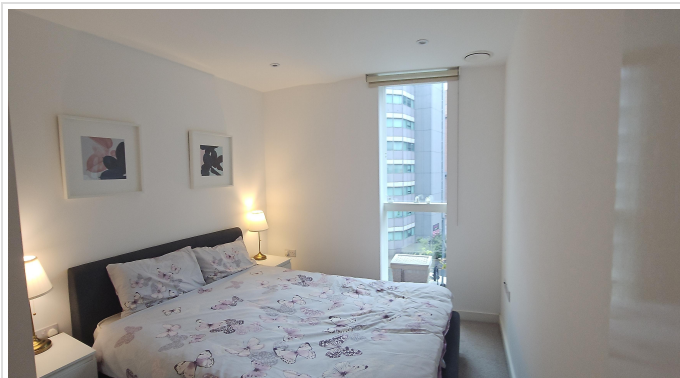


1 Bed Flat In Tennyson Apartments 1 Saffron Central Square, Croydon, CR0
2FW £189,950



SHORT DESCRIPTION

Property Ref: 15679 987 YEAR LEASE. PRICED to Sell FAST. Stylish modern apartment. Private car park available. Underfloor heating in every room. For further information or to arrange a viewing: Please fill out the contact form below — this will send your message directly to me. The form isn't specific to this advert (I know, it's a bit awkward!) — but don't worry, I'll still receive your enquiry personally. Once I do, I'll reply with my direct phone number and email address so we can arrange viewings or answer any questions quickly. I'll also send you a YouTube link with a full walkthrough of the building and the apartment so you can get a proper feel for it before visiting. Unfortunately I'm not allowed to list my contact details directly on this advert — but you only need to fill out the contact form once. 987 Year Lease! Modern One-Bedroom Apartment Tennyson Apartments, Saffron Square, Croydon CR0 Enjoy nearly a millennium of ownership with this long-lease one-bedroom apartment in Croydon's landmark Saffron Square development, designed for effortless modern city living. Located on the 4th floor, the apartment features a bright open-plan layout, full-height glazing, and efficient underfloor heating. Every detail reflects comfort, convenience, and contemporary design. Residents enjoy access to a 24-hour concierge, private residents gym, secure underground car park, cycle storage, and roof terraces with panoramic city views. All part of a beautifully maintained, community-focused development. The service charge is fully paid up. Key Highlights 987-year lease. Virtual freehold Ground rent: £250 per year 24 hour concierge and on-site residents gym Secure underground parking and bike storage Underfloor heating with efficient communal system Double glazing throughout. Quiet and energy-efficient Roof terraces, landscaped gardens and community areas Video entry linked directly to your phone Tram stop directly outside the building connecting across Croydon and into Wimbledon 2 mins to West Croydon. 5 mins to East Croydon Station Close to shops, cafes, Boxpark and London transport links Strong residents community with annual events and meetings. Ideal for first-time buyers or investors. Fully furnished or unfurnished. A rare opportunity to own a long-lease apartment in one of Croydon's best-managed developments Modern, secure, and ready to move in or rent out immediately. Property Type: Flat Full selling price: £189950.00 Pricing Options: Fixed Price Tenure: Leasehold Remaining lease (In Year): 987 Council tax band: D EPC rating: C Measurement: 419.793 sq.ft. Outside Space: Communal Garden, Shared Garden, Enclosed Garden, Roof Garden Parking: Communal, Private, On street Heating Type: Underfloor Heating, Double Glazing, Central Heating, Gas Central Heating Chain Sale or Chain Free: Chain free Possession of the property: Vacant -----

1

Bed Room(s)

1

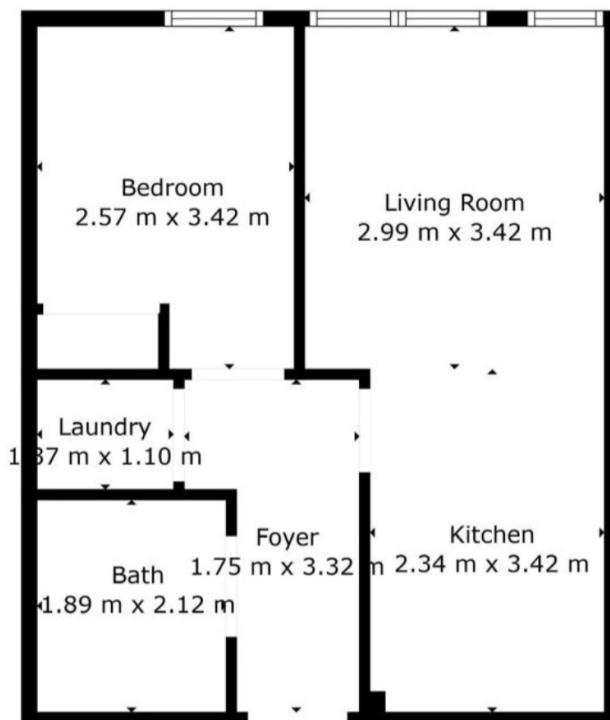
Bath Room(s)

1

Living Room(s)

FLOOR PLAN

Illustrations are for identification purposes only and are not to scale. All measurements are a maximum and include wardrobes and bay windows where applicable.



EPC GRAPH

Illustrations are for identification purposes only and are not to scale.
All measurements are a maximum and include wardrobes and bay windows where applicable.

Property type	Mid-floor flat
Total floor area	39 square metres

Rules on letting this property

Properties can be let if they have an energy rating from A to E.

You can read [guidance for landlords on the regulations and exemptions](#).

Energy rating and score

This property's energy rating is C. It has the potential to be C.

[See how to improve this property's energy efficiency.](#)

Score	Energy rating	Current	Potential
92+	A		
81-91	B		
69-80	C	79 c	80 c
55-68	D		
39-54	E		
21-38	F		
1-20	G		

The graph shows this property's current and potential energy rating.

Properties get a rating from A (best) to G (worst) and a score. The better the rating and score, the lower your energy bills are likely to be.

For properties in England and Wales:

- the average energy rating is D
- the average energy score is 60

Disclaimer: The information displayed about this property comprises a property advertisement. 99home.co.uk (<http://www.99home.co.uk/>) will not make no warranty for the accuracy or completeness of the advertisement or any linked or associated information, and 99home has no control over the content. This property advertisement does not constitute property particulars, the property may offer to tenants in same condition as they have seen on time of the viewing. The information is provided and maintained by 99home.co.uk (<http://www.99home.co.uk/>)

Company registration number in England : 10469887 VAT: 263 3023 36
Copyright © 99Home Limited 2017. All rights reserved.