

2 Bed Terraced In Greencoat Place , London, SW1P 1PP

£9,250 Monthly





SHORT DESCRIPTION

Property Ref: 15795 Overview An executive style, refurbished two bedroom two bathroom house with private entrance located on a quiet street in the heart of Westminster. Contemporary interior styling elevates this unique townhouse which has been meticulously refurbished throughout providing sophisticated accommodation in one of London's most sought after neighborhoods providing a peaceful and exclusive city centre hideaway within easy walking distance of central London's world class attractions. The Living Spaces The light-filled open-plan kitchen and dining area are located on the ground floor and provide ample space for entertaining with Gaggaenau appliances complimenting the stunning marble worktops. The entire top floor is dedicated to a live & work suite completed with a flat screen TV and an in-ceiling speaker system. The spacious master bedroom is completed with a bespoke built in dressing table and has an en-suite bathroom, with a further bedroom on the ground and another bathroom on the first floor. The Neighborhood Discretely located on a quiet street in the heart of Westminster, the house is accessed via its own gate leading to a private courtyard approach and dedicated and private entrance. Located in the heart of central London as is a short stroll from London's finest green spaces including St James's Park, Green Park and Hyde Park. Within a 15 minute walk some of London's most iconic landmarks can be found including Buckingham Palace, Westminster Abbey and Big Ben. Transport Links Transport connections are superb with mainline rail services including the Gatwick Express ant Victoria Station and access to underground services on the Victoria, District and Circle and Jubilee Line all within a short stroll. Property Type: Terraced Full Renting price: £9250.00 Pricing Options: No Status Tenure: minimum-1 month, maximum-12 months Council tax band: G EPC rating: D Measurement:893.405 sq.ft. Outside Space: Rear Garden Heating Type: Central Heating -----

2

Bed Room(s)

2

Bath Room(s)

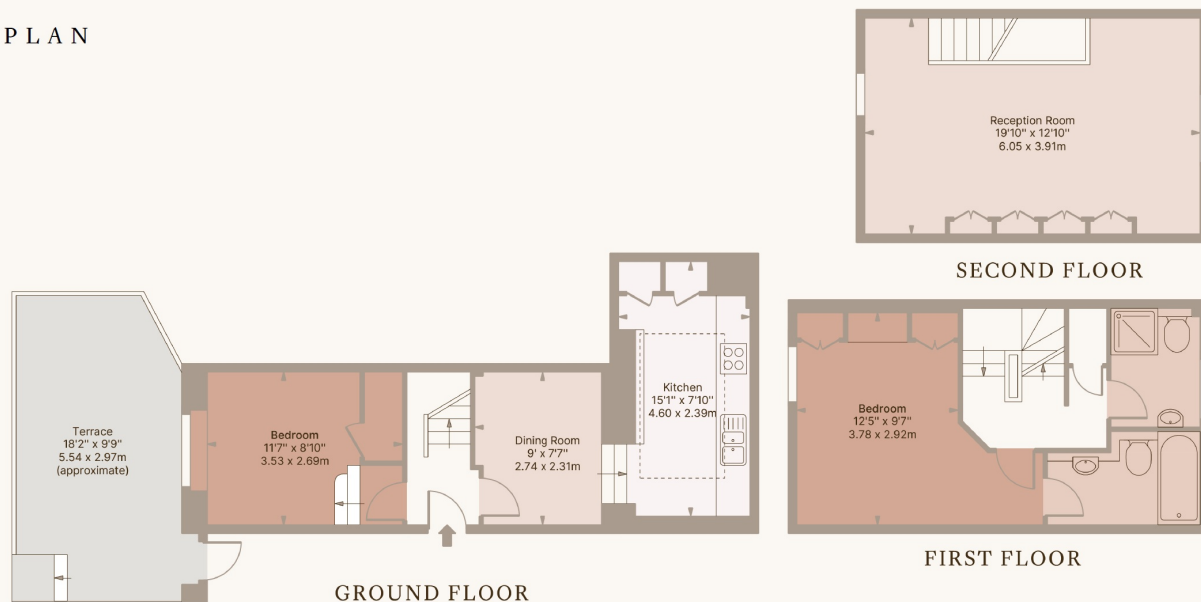
1

Living Room(s)

FLOOR PLAN

Illustrations are for identification purposes only and are not to scale.
All measurements are a maximum and include wardrobes and bay windows where applicable.

FLOORPLAN



EPC GRAPH

Illustrations are for identification purposes only and are not to scale.
All measurements are a maximum and include wardrobes and bay windows where applicable.

Property type	Mid-terrace house
Total floor area	83 square metres

Rules on letting this property

Properties can be let if they have an energy rating from A to E.

You can read [guidance for landlords on the regulations and exemptions](#).

Energy rating and score

This property's energy rating is D. It has the potential to be B.

[See how to improve this property's energy efficiency.](#)

Score	Energy rating	Current	Potential
92+	A		
81-91	B		86 B
69-80	C		
55-68	D	58 D	
39-54	E		
21-38	F		
1-20	G		

The graph shows this property's current and potential energy rating.

Properties get a rating from A (best) to G (worst) and a score. The better the rating and score, the lower your energy bills are likely to be.

For properties in England and Wales:

- the average energy rating is D
- the average energy score is 60

Disclaimer: The information displayed about this property comprises a property advertisement. 99home.co.uk (/) will not make no warranty for the accuracy or completeness of the advertisement or any linked or associated information, and 99home has no control over the content. This property advertisement does not constitute property particulars, the property may offer to tenants in same condition as they have seen on time of the viewing. The information is provided and maintained by 99home.co.uk (/)

