

5 Bed Maisonette In 64 Eccleston Square , London, SW1V 1PH £25,000 Monthly





SHORT DESCRIPTION

Property Ref: 15838 Welcome to Eccleston Square — a truly exceptional residence set within one of Pimlico’s most sought-after garden squares. Spanning approximately 7,000 sq ft, this beautifully presented apartment combines classic period charm with modern luxury, offering an abundance of space, light, and comfort. The property features four generously sized bedrooms, including a luxurious principal suite with built-in wardrobes and en-suite bathroom. The grand reception rooms boast high ceilings, elegant detailing, and tall sash windows that fill the home with natural light. A modern fitted kitchen with premium appliances seamlessly connects to a bright dining area, making it perfect for entertaining or family gatherings. Step outside onto your private balcony, ideal for morning coffee or evening drinks overlooking the beautifully maintained communal gardens of Eccleston Square. Additional benefits include on-street residents’ parking, ample storage throughout, and access to the private gardens (by separate arrangement). Located moments from Victoria Station, the property offers superb transport links across London and beyond. The area is home to a range of boutique shops, fine dining restaurants, and excellent schools — making it an outstanding choice for families and professionals alike. — Key Features: • Five spacious bedrooms • Approx. 7,000 sq ft of living space • Private balcony with garden views • Elegant period features with modern finishes • Access to Eccleston Square gardens • On-street residents’ parking • Prime SW1 location – moments from Victoria Station • Ideal for families and entertaining • . Two Kitchens Property Type: Maisonette Full renting price: £25000.00 Pricing Options: No Status Tenure: 12 months Council tax band: H EPC rating:C Measurement: 6922 sq.ft.(internal area) Outside Space: Communal Garden, Shared Garden, Balcony, Terrace Parking: On street Heating Type: Electric Heating,Gas Heating,Underfloor Heating -----

5

Bed Room(s)

4

Bath Room(s)


2

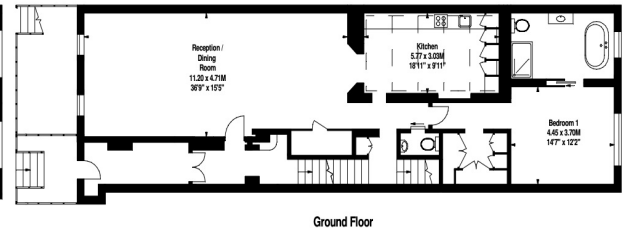
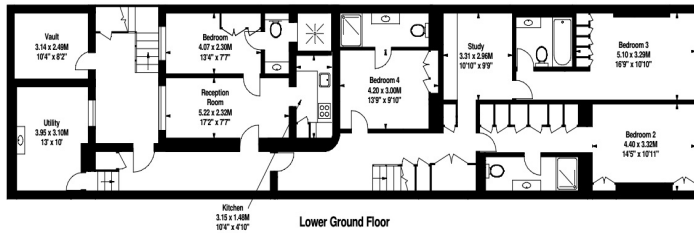
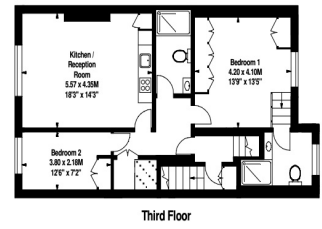
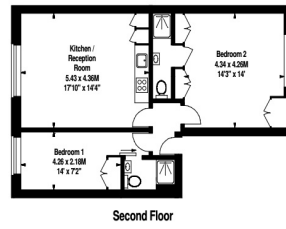
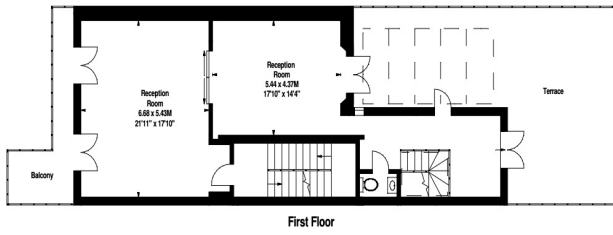
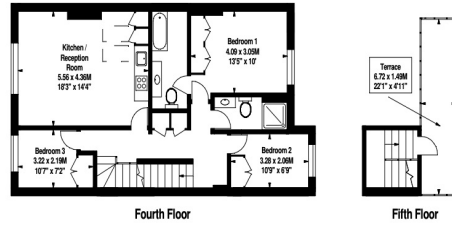
Living Room(s)

FLOOR PLAN

Illustrations are for identification purposes only and are not to scale.
All measurements are a maximum and include wardrobes and bay windows where applicable.



Eccleston Square, SW1
Approximate Gross Internal Area 643.02 sq m (6922 sq ft)
Approximate Area Of Terrace/Balcony/Vault 100.88 sq m (1086 sq ft)
 Under 1.5m head height



EPC GRAPH

Illustrations are for identification purposes only and are not to scale.
All measurements are a maximum and include wardrobes and bay windows where applicable.

Property type	Basement maisonette
Total floor area	390 square metres

Rules on letting this property

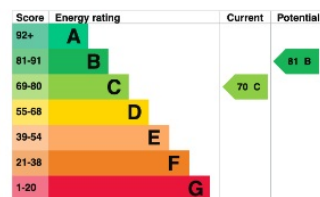
Properties can be let if they have an energy rating from A to E.

You can read [guidance for landlords on the regulations and exemptions \(https://www.gov.uk/guidance/domestic-private-rented-property-minimum-energy-efficiency-standard-landlord-guidance\)](https://www.gov.uk/guidance/domestic-private-rented-property-minimum-energy-efficiency-standard-landlord-guidance).

Energy rating and score

This property's energy rating is C. It has the potential to be B.

[See how to improve this property's energy efficiency.](#)



The graph shows this property's current and potential energy rating.

Properties get a rating from A (best) to G (worst) and a score. The better the rating and score, the lower your energy bills are likely to be.

For properties in England and Wales:

the average energy rating is D
the average energy score is 60

Disclaimer: The information displayed about this property comprises a property advertisement. 99home.co.uk (/) will not make no warranty for the accuracy or completeness of the advertisement or any linked or associated information, and 99home has no control over the content. This property advertisement does not constitute property particulars, the property may offer to tenants in same condition as they have seen on time of the viewing. The information is provided and maintained by 99home.co.uk (/)

