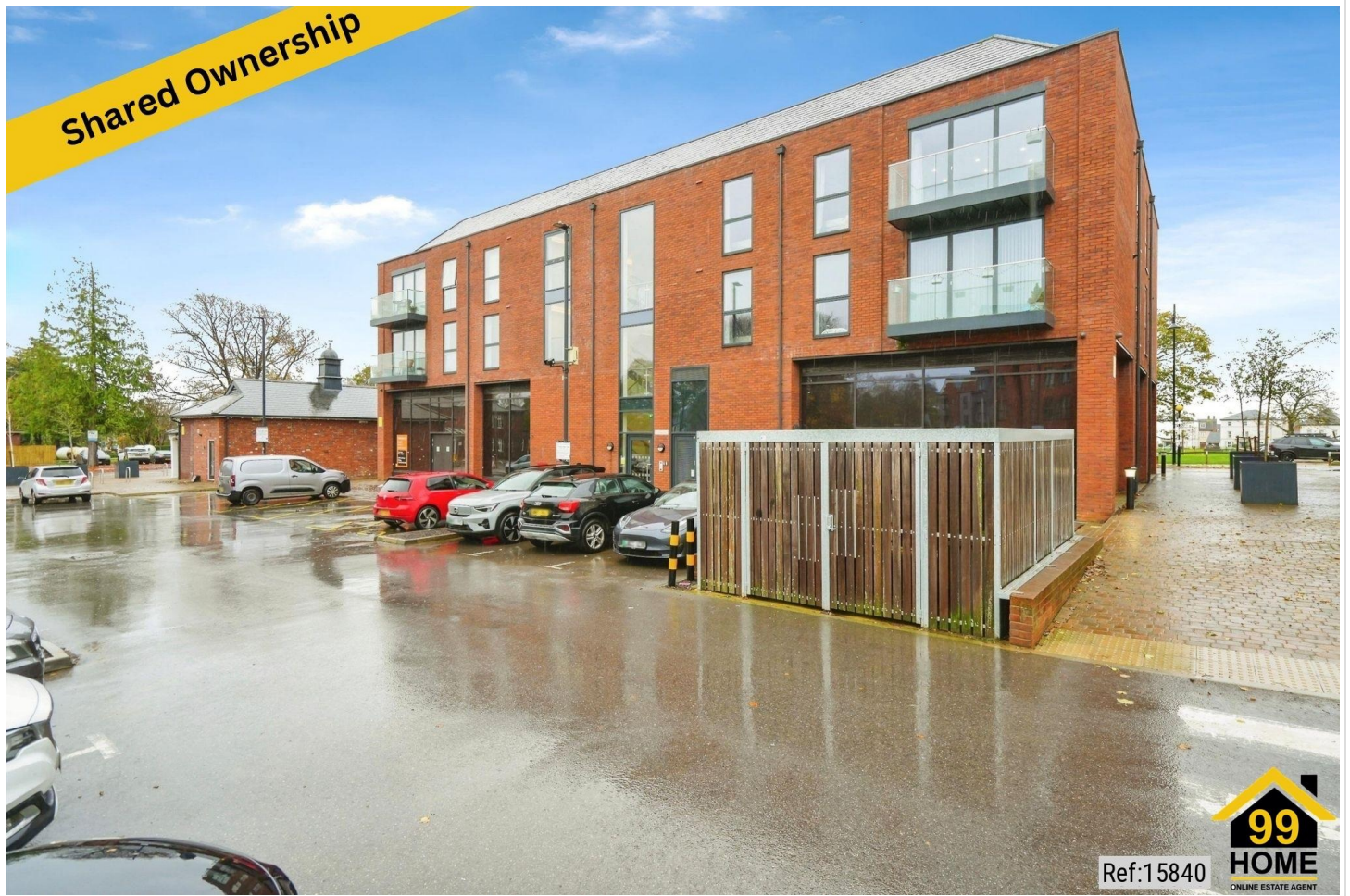


2 Bed Flat In West Castle Street Upper Heyford, Bicester, OX25 5BX £120,000





## SHORT DESCRIPTION

Property Ref: 15840 The Gate House, West Castle Street, Upper Heyford, Bicester, OX25. Elegant 2-Bedroom Apartment in a Charming Countryside Setting. Welcome to The Gate House, a beautifully presented two-bedroom apartment perfectly positioned in the picturesque village of Upper Heyford, just a short drive from Bicester. This stylish home combines modern comfort with classic charm, offering a tranquil retreat in one of Oxfordshire's most desirable locations. Step inside to discover a bright and spacious living room, ideal for relaxing or entertaining. Large windows fill the space with natural light, highlighting the contemporary finishes and thoughtfully designed layout. The modern kitchen is well-appointed with high-quality fittings and ample storage, making it perfect for everyday living. The apartment boasts two generous double bedrooms, each offering a calm and inviting atmosphere. The two bathrooms, including one en-suite, feature elegant fixtures and a sleek, modern design. Outside, residents can enjoy the serenity of the surrounding countryside while benefiting from convenient access to local amenities, Bicester Village, and excellent transport links to Oxford and London. Whether you're seeking a stylish home, a peaceful countryside escape, or a smart investment opportunity, The Gate House offers the perfect balance of comfort, convenience, and character. Property Type: Flat Full selling price: £300000.00 Pricing Options: Shared ownership Tenure: Leasehold Percentage to be sold: 40% Share price: £120000.00 Monthly rent based on 40% share: £473.02 Remaining lease (In Years): 994 Yearly Ground Rent Cost: £0.00 Yearly Management Cost: £99.96 Council tax band: B EPC rating: B Measurement: Bedrooms, Bathrooms, and Living Room Possession of the property: Occupied

2

Bed Room(s)

2

Bath Room(s)

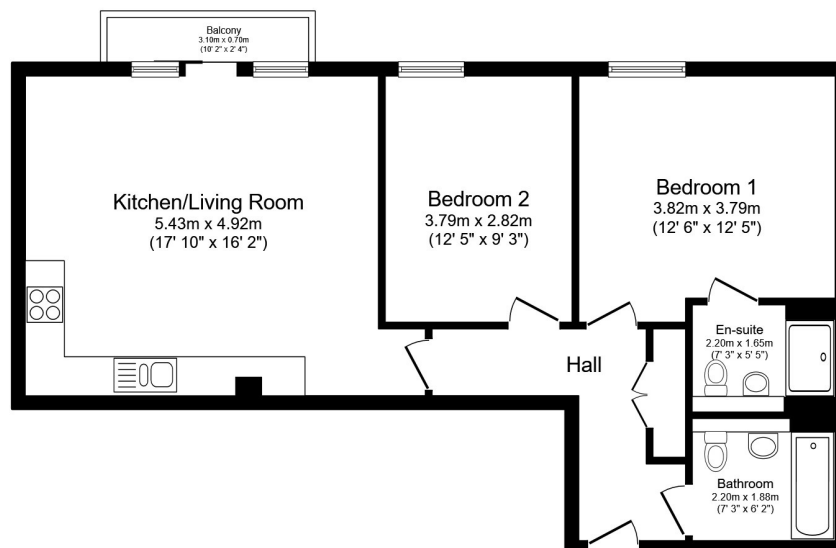
1

Living Room(s)

## FLOOR PLAN

Illustrations are for identification purposes only and are not to scale.  
All measurements are a maximum and include wardrobes and bay windows where applicable.





Total floor area 70.0 sq.m. (754 sq.ft.) approx

This floor plan is for illustrative purposes only. It is not drawn to scale. Any measurements, floor areas (including any total floor area), openings and orientation are approximate. No details are guaranteed, they cannot be relied upon for any purpose and they do not form part of any agreement. No liability is taken for any error, omission or misstatement. A party must rely upon its own inspection(s). Powered by [www.focalagent.com](http://www.focalagent.com)

## EPC GRAPH

Illustrations are for identification purposes only and are not to scale.  
All measurements are a maximum and include wardrobes and bay windows where applicable.

Score	Energy rating	Current	Potential
92+	A		
81-91	B	83 B	83 B
69-80	C		
55-68	D		
39-54	E		
21-38	F		
1-20	G		

**Disclaimer:** The information displayed about this property comprises a property advertisement. 99home.co.uk (/) will not make no warranty for the accuracy or completeness of the advertisement or any linked or associated information, and 99home has no control over the content. This property advertisement does not constitute property particulars, the property may offer to tenants in same condition as they have seen on time of the viewing. The information is provided and maintained by 99home.co.uk (/)

