

2 Bed Apartment In Garthowen House 2 Garth Road, Chiswick, W4 4DQ £186,250





SHORT DESCRIPTION

Property Ref: 15855 We are pleased to present an exceptional Apartment located at Garthowen House 2, Chiswick, W4. This wonderful residence boasts 2 bedrooms, 2 bathrooms, and 1 living room, offering ample space for comfortable living. Additionally, it features a fully-fitted kitchen, ideal for culinary enthusiasts, along with the convenience of a Communal Garden, Balcony, and on-street parking. Positioned in a prime location, this property offers easy access to a range of local amenities and public transportation, ensuring convenience for residents. Its proximity to esteemed schools and a college enhances its appeal, providing families with access to excellent educational opportunities. This residence embodies the perfect blend of comfort, convenience, and quality living, making it an ideal choice for discerning individuals or families seeking a place to call home. - 3 Underground stations and a National Rail station within a mile radius. - 10 mins walk to Chiswick High Road offering loads of shops and eateries. - Chiswick Cinema is within walking distance. - M4 10 minutes away - Heathrow is 20 minutes by car and 30 minutes by public transport. Property Type: Apartment Full selling price: £745000.00 Pricing Options: Shared ownership Tenure: Leasehold Percentage to be sold: 25% Share price: £186250.00 Monthly rent based on 25% share: £1117.44 Remaining lease (In Years): 121 Yearly Ground Rent Cost: £0.00 Yearly Management Cost: £2573.40 Council tax band: E EPC rating: B Measurement: Bedrooms, Bathrooms, and Living Room Possession of the property: Occupied

2

Bed Room(s)

2

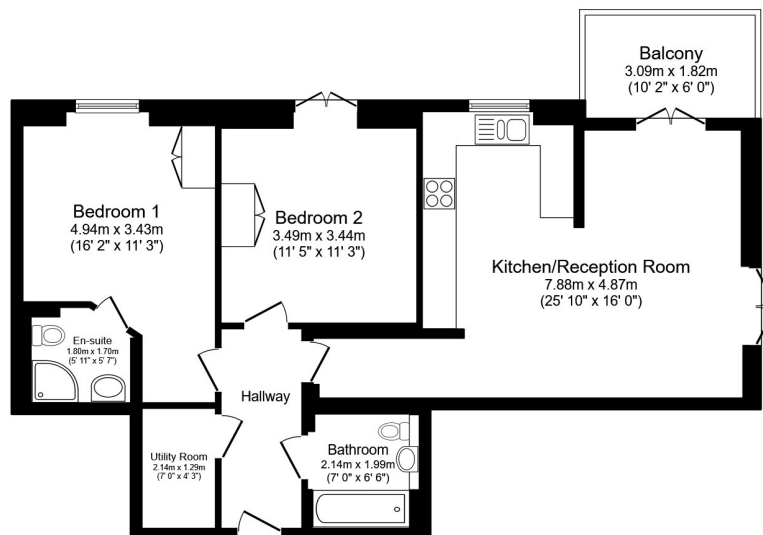
Bath Room(s)

1

Living Room(s)

FLOOR PLAN

Illustrations are for identification purposes only and are not to scale.
All measurements are a maximum and include wardrobes and bay windows where applicable.



Total floor area 76.7 sq.m. (826 sq.ft.) approx

This floor plan is for illustrative purposes only. It is not drawn to scale. Any measurements, floor areas (including any total floor area), openings and orientation are approximate. No details are guaranteed, they cannot be relied upon for any purpose and they do not form part of any agreement. No liability is taken for any error, omission or misstatement. A party must rely upon its own inspection(s). Powered by www.focalagent.com

EPC GRAPH

Illustrations are for identification purposes only and are not to scale.

All measurements are a maximum and include wardrobes and bay windows where applicable.

Score	Energy rating	Current	Potential
92+	A		
81-91	B	86 B	86 B
69-80	C		
55-68	D		
39-54	E		
21-38	F		
1-20	G		

Disclaimer: The information displayed about this property comprises a property advertisement. 99home.co.uk (/) will not make no warranty for the accuracy or completeness of the advertisement or any linked or associated information, and 99home has no control over the content. This property advertisement does not constitute property particulars, the property may offer to tenants in same condition as they have seen on time of the viewing. The information is provided and maintained by 99home.co.uk (/)

