

2 Bed Flat In Wheathill House Croydon Road, London, SE20 7UJ £1,500 Monthly





SHORT DESCRIPTION

Property Ref: 15894 Spacious, bright and airy flat just 0.5 miles from Anerley Station amenities and rail links. With separate kitchen, generous double and 1 single bedroom the flat offers comfortable home for professional couple or small family. In purpose built large residential block, there is secure communal entry system and lighting as well as residents' parking and well kept communal gardens. Rent directly from local landlord. Property Type: Flat Full Renting price: £1500.00 Pricing Options: Fixed Price Tenure: 12 months Council tax band: B EPC rating: C Measurement: 731.946 sq.ft. Outside Space: Communal Garden Parking: Residents Heating Type: Gas Central Heating -----

2
Bed Room(s)

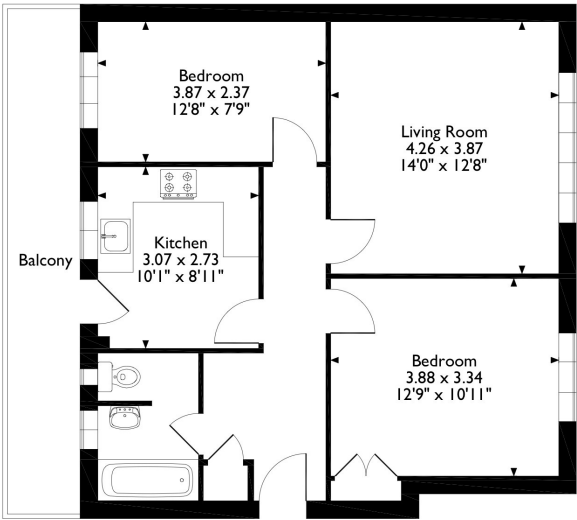
1
Bath Room(s)

1
Living Room(s)

FLOOR PLAN

Illustrations are for identification purposes only and are not to scale.
All measurements are a maximum and include wardrobes and bay windows where applicable.

Wheathill House Croydon Road, London
Approximate Gross Internal Area
62 Sq M/664 Sq Ft

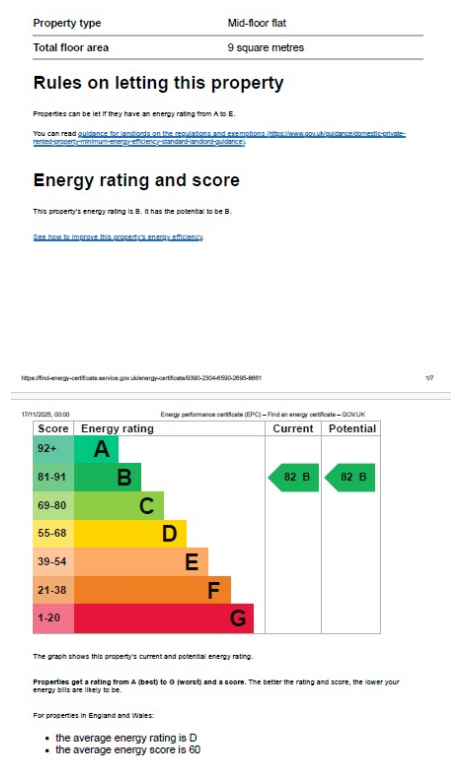


Second Floor

Please note that the location of doors, windows and other items are approximate and this floorplan is to be used for illustrative purposes only. Unauthorized reproduction is prohibited.

EPC GRAPH

Illustrations are for identification purposes only and are not to scale.
All measurements are a maximum and include wardrobes and bay windows where applicable.



Disclaimer: The information displayed about this property comprises a property advertisement. 99home.co.uk (/) will not make no warranty for the accuracy or completeness of the advertisement or any linked or associated information, and 99home has no control over the content. This property advertisement does not constitute property particulars, the property may offer to tenants in same condition as they have seen on time of the viewing. The information is provided and maintained by 99home.co.uk (/)