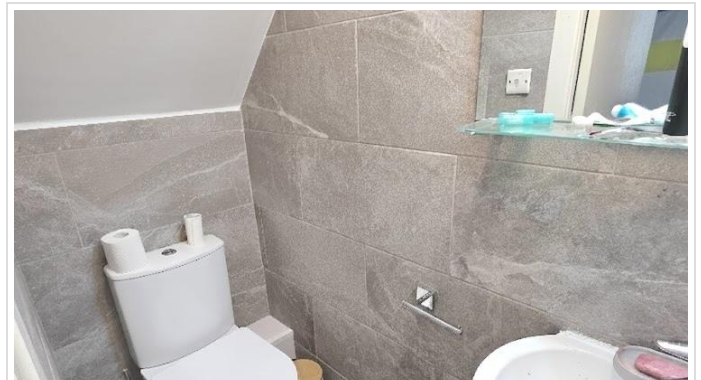
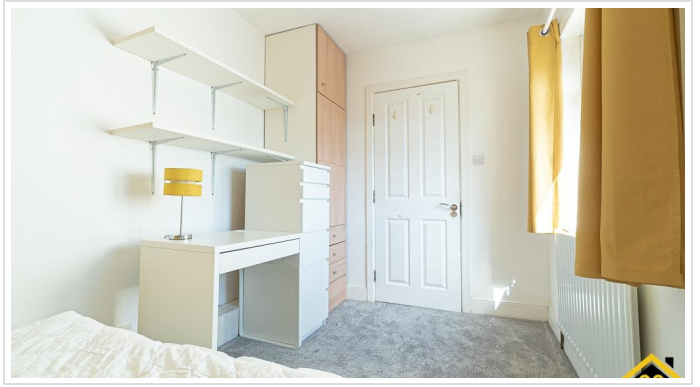


5 Bed Terraced In Avenue Road , Southampton, SO14 6BB

£2,708 Monthly





SHORT DESCRIPTION

Property Ref: 15959 STUDENT HOME - This thoughtfully designed home with 5 bedrooms and 2 bathrooms is perfect for students seeking a warm and pleasant home in a great location. The open plan living room is decorated in a fresh, modern style, and this leads onto a stylish and well appointed kitchen. This includes Velux windows and a vaulted ceiling which provide a bright and airy environment for cooking or socialising. There will also be a separate dining room (not pictured) adjoining the kitchen, with access out onto the garden. The house includes 2 bathrooms, one on each floor. The kitchen is well equipped, with a washing machine, tumble dryer, two fridges, induction hob, oven, two freezers and plenty of storage space. There's also a brand new, high efficiency boiler. Patio doors from the kitchen lead out onto a beautiful, south-facing garden, and there's a patio area too, perfect for a summer BBQ or party. The garden also has access from the road and contains a secure bike shed. All the bedrooms have been thoughtfully designed and are fully furnished, with modern Ikea furniture, and all have double beds. They are each tastefully decorated in a fresh, contemporary style. In order to minimise bills, LED lighting is fitted throughout the house, and there's also high levels of insulation, a high efficiency boiler, and double glazing throughout. For your security all the rooms have their own door locks. Property Type: Terraced Full Renting price: £2708.33 Pricing Options: No Status Tenure: 12 months Council tax band: C EPC rating: D Measurement: 1065.63 sq.ft. Outside Space: Rear Garden Parking: On street Heating Type: Gas Central Heating --



Bed Room(s)



Bath Room(s)



Living Room(s)

FLOOR PLAN

Illustrations are for identification purposes only and are not to scale.
All measurements are a maximum and include wardrobes and bay windows where applicable.

EPC GRAPH

Illustrations are for identification purposes only and are not to scale.
All measurements are a maximum and include wardrobes and bay windows where applicable.

