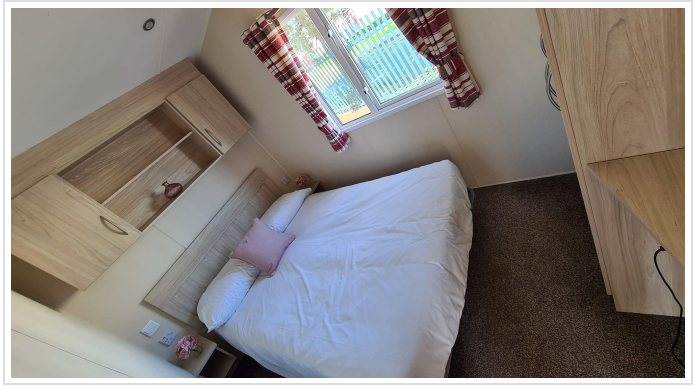


2 Bed Park Home In Newquay , Crantock, Newquay, TR8 5EW £1,000 Monthly





## SHORT DESCRIPTION

Property Ref: 16075 Finance made simple: Finance options are available, subject to a credit check with our panel of lenders. Terms and deposits vary depending on individual circumstances, and we're happy to talk through the options in detail. The caravan comes fully connected to gas, water and electricity, ready for immediate use. Site fees included: Site fees are included in the price and are free for 2026. Choice and variety: We offer a range of 2 and 3 bedroom caravans, with options to suit different budgets, styles and requirements. Whether you're looking for something practical and affordable or a more spacious holiday home, there are plenty of options available. Park highlights: Set on a well-maintained coastal park close to sandy beaches and scenic walking routes, the park is open all year round and offers: Excellent on-park amenities Family-friendly facilities and social spaces Easy access to coastal paths, beaches and local villages A relaxed atmosphere ideal for both quiet escapes and active breaks Subletting options for income potential The surroundings and lifestyle: Located in the heart of Crantock, this coastal park offers the perfect opportunity to enjoy Cornwall as much or as little as you like during the open season. You'll have easy access to: Beautiful sandy beaches and the South West Coast Path Scenic coastal walks, dunes and countryside Local pubs, cafés and village amenities A laid-back Cornish setting ideal for peaceful escapes or active breaks Whether you're looking for your own coastal retreat or a holiday home with income potential, this is a fantastic opportunity to enjoy Cornwall all year round. Images may be for example purposes only. Property Type: Park Home Full Renting price: £1000.00 Pricing Options: Fixed Price Outside Space: Rear Garden Parking: Communal Heating Type: Electric Heating... -----



**Bed Room(s)**



**Bath Room(s)**



**Living Room(s)**

## FLOOR PLAN

Illustrations are for identification purposes only and are not to scale.  
All measurements are a maximum and include wardrobes and bay windows where applicable.

## EPC GRAPH

Illustrations are for identification purposes only and are not to scale.  
All measurements are a maximum and include wardrobes and bay windows where applicable.

---

**Disclaimer:** The information displayed about this property comprises a property advertisement. 99home.co.uk (<http://www.99home.co.uk/>) will not make no warranty for the accuracy or completeness of the advertisement or any linked or associated information, and 99home has no control over the content. This property advertisement does not constitute property particulars, the property may offer to tenants in same condition as they have seen on time of the viewing. The information is provided and maintained by 99home.co.uk (<http://www.99home.co.uk/>)

---