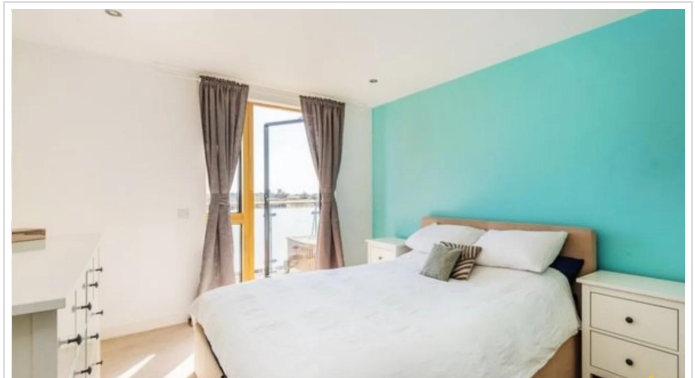


1 Bed Flat In Church Road , London, NW10 9BA

£1,400 Monthly





SHORT DESCRIPTION

Property Ref: 16133 Luxurious 1 bedroom flat with gated parking available and fantastic views over London. The kitchen has a dishwasher, electric cooker, oven microwave and washing machine. It has underfloor heating, great storage and a Fast HyperOptic Broadband router. Viewing highly recommended! Please provide some brief information about yourself when enquiring. Please note: - Can be provided semi furnished or unfurnished at tenant preference - The parking permit is not included in the rent and must be applied for separately. ***Full affordability, credit and reference checks will be carried out without exception.*** Property Type: Flat Pricing Options: Fixed Price Tenure: 6 months Council tax band: B EPC rating: B Measurement: 484.376 sq.ft. Parking: Gated, Permit, Off street Heating Type: Underfloor Heating -----



Bed Room(s)



Bath Room(s)



Living Room(s)

FLOOR PLAN

Illustrations are for identification purposes only and are not to scale.
All measurements are a maximum and include wardrobes and bay windows where applicable.

EPC GRAPH

Illustrations are for identification purposes only and are not to scale.
All measurements are a maximum and include wardrobes and bay windows where applicable.

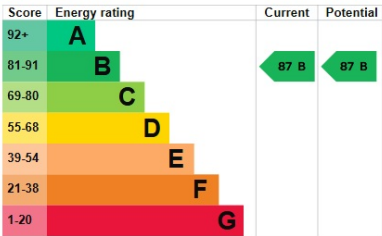
Property type	Mid-floor flat
Total floor area	45 square metres

Rules on letting this property

Properties can be let if they have an energy rating from A to E.
You can read [guidance for landlords on the regulations and exemptions](#).

Energy rating and score

This property's energy rating is B. It has the potential to be B.
[See how to improve this property's energy efficiency](#).



The graph shows this property's current and potential energy rating.

Properties get a rating from A (best) to G (worst) and a score. The better the rating and score, the lower your energy bills are likely to be.

For properties in England and Wales:

- the average energy rating is D
- the average energy score is 60

Disclaimer: The information displayed about this property comprises a property advertisement. 99home.co.uk (/) will not make no warranty for the accuracy or completeness of the advertisement or any linked or associated information, and 99home has no control over the content. This property advertisement does not constitute property particulars, the property may offer to tenants in same condition as they have seen on time of the viewing. The information is provided and maintained by 99home.co.uk (/)