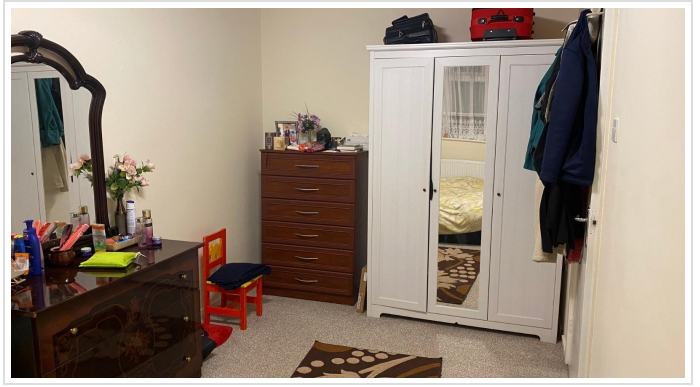
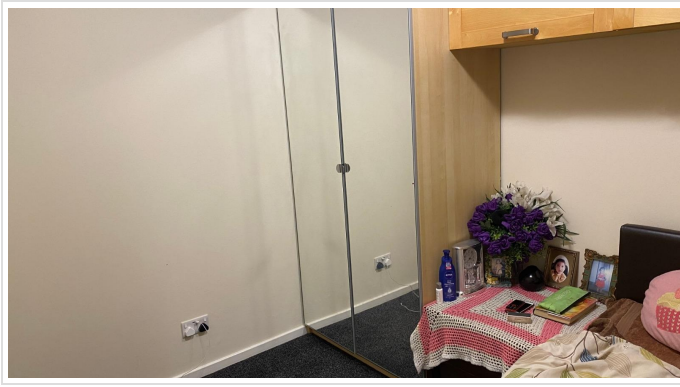


3 Bed Terraced In Plesman Way , Wallington, SM6 9NB

£2,150 Monthly





SHORT DESCRIPTION

Property Ref: 16246 To Let: A Three-Bedroom Terraced House Situated in the popular Wallington area, this well-presented three-bedroom terraced house offers bright, comfortable living with the added benefit of a garage and private parking. The property features a large and light-filled living room with laminate flooring, gas central heating, a gas fire, ceiling lighting, and useful under-stairs storage. A separate kitchen and dining area provide a practical and welcoming space for everyday living. Upstairs, the property comprises two good-sized double bedrooms and one smaller bedroom, all carpeted. The bathroom includes a three-piece suite with bath, electric shower, shower screen, and tiled splashbacks. The house is known for being warm and energy-efficient, retaining heat well throughout the year. Externally, there is a good-sized rear garden with convenient rear access via an alleyway for bin removal. Ideally located just a stone's throw from a large park with children's play areas and leisure facilities, the property also benefits from excellent bus links and easy access to main roads and motorways. Rent: £2150 Deposit: £2480 Council Tax: D EPC: C Early viewing is highly recommended.

3

Bed Room(s)

1

Bath Room(s)

1

Living Room(s)

FLOOR PLAN

Illustrations are for identification purposes only and are not to scale.
All measurements are a maximum and include wardrobes and bay windows where applicable.

EPC GRAPH

Illustrations are for identification purposes only and are not to scale.
All measurements are a maximum and include wardrobes and bay windows where applicable.

Energy rating and score

This property's energy rating is C. It has the potential to be B.

[See how to improve this property's energy efficiency.](#)

Score	Energy rating	Current	Potential
92+	A		
81-91	B		90 B
69-80	C	76 C	
55-68	D		
39-54	E		
21-38	F		
1-20	G		

The graph shows this property's current and potential energy rating.

Properties get a rating from A (best) to G (worst) and a score. The better the rating and score, the lower your energy bills are likely to be.

For properties in England and Wales:

the average energy rating is D
the average energy score is 60

Disclaimer: The information displayed about this property comprises a property advertisement. 99home.co.uk (/) will not make no warranty for the accuracy or completeness of the advertisement or any linked or associated information, and 99home has no control over the content. This property advertisement does not constitute property particulars, the property may offer to tenants in same condition as they have seen on time of the viewing. The information is provided and maintained by 99home.co.uk (/)