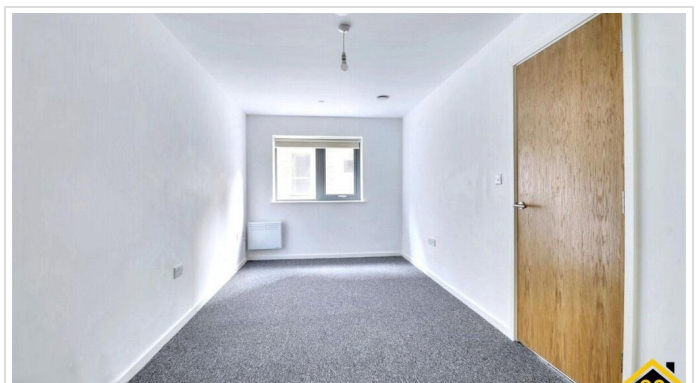
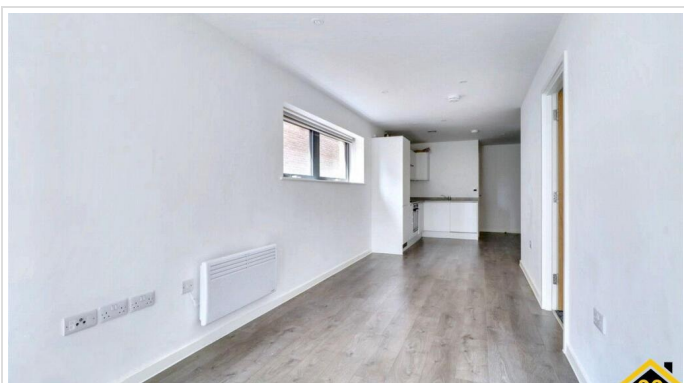


1 Bed Flat In Hindle House 11 Traffic Street, Nottingham, NG2 1NE £975 Monthly





SHORT DESCRIPTION

Property Ref: 16393 A well-presented one-bedroom apartment located in a convenient and sought-after area of Nottingham. This property offers comfortable and modern living accommodation, comprising two spacious bedrooms, one contemporary bathroom, and a bright and airy living room ideal for relaxing or entertaining guests. The property benefits from a well-appointed kitchen, ample natural light throughout, and a practical layout suitable for professionals, couples, or small families. Situated close to local amenities, transport links, shops, and Nottingham City Centre, this apartment provides both convenience and comfortable living. Early viewing is highly recommended. Property Type: Flat Full Renting price: £975.00 Pricing Options: Fixed Price Tenure: 12 months Council tax band: B EPC rating: B Measurement: 441.32 sq.ft. Heating Type: Electric Heating -----



Bed Room(s)



Bath Room(s)



Living Room(s)

FLOOR PLAN

Illustrations are for identification purposes only and are not to scale.
All measurements are a maximum and include wardrobes and bay windows where applicable.

EPC GRAPH

Illustrations are for identification purposes only and are not to scale.
All measurements are a maximum and include wardrobes and bay windows where applicable.

Property type	Ground-floor flat
Total floor area	41 square metres

Rules on letting this property

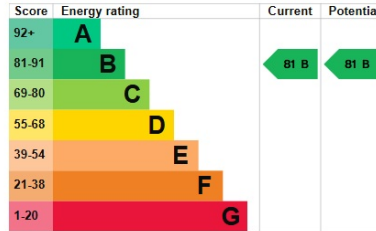
Properties can be let if they have an energy rating from A to E.

You can read [guidance for landlords on the regulations and exemptions](#).

Energy rating and score

This property's energy rating is B. It has the potential to be B.

[See how to improve this property's energy efficiency.](#)



The graph shows this property's current and potential energy rating.

Properties get a rating from A (best) to G (worst) and a score. The better the rating and score, the lower your energy bills are likely to be.

For properties in England and Wales:

- the average energy rating is D
- the average energy score is 60

Disclaimer: The information displayed about this property comprises a property advertisement. 99home.co.uk (<http://www.99home.co.uk/>) will not make no warranty for the accuracy or completeness of the advertisement or any linked or associated information, and 99home has no control over the content. This property advertisement does not constitute property particulars, the property may offer to tenants in same condition as they have seen on time of the viewing. The information is provided and maintained by 99home.co.uk (<http://www.99home.co.uk/>)

Company registration number in England : 10469887 VAT: 263 3023 36
 Copyright © 99Home Limited 2017. All rights reserved.