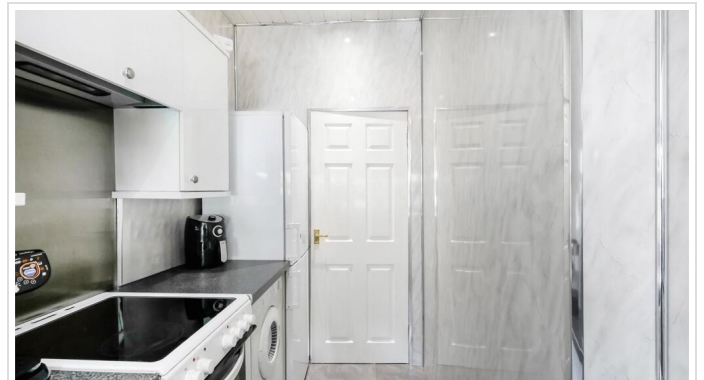
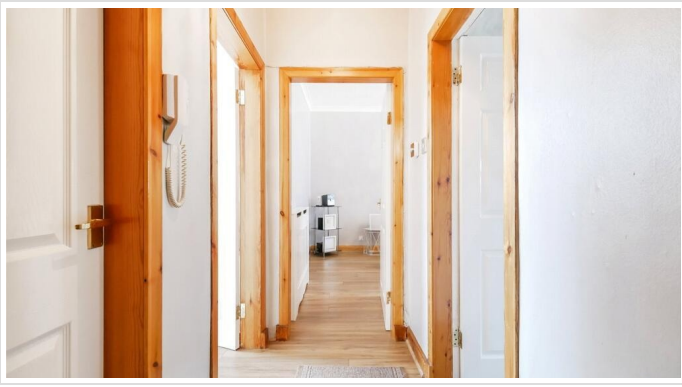


2 Bed Flat In Royston Road , Glasgow, G21 2DJ

£950 Monthly





## SHORT DESCRIPTION

Property Ref: 16545 **Charming 2-Bedroom Ground Floor Flat for Rent - G21 , Glasgow** This beautifully presented **unfurnished ground floor flat** offers an ideal living space with a cozy and inviting atmosphere. Located in the sought-after area of **G21 , Glasgow**, this delightful home boasts a perfect blend of modern comfort and classic touches. **Key Features:** **2 bedrooms** - perfect for a couple, small family, or professionals. **Bright and airy living room** with lovely decor and **warm accents**, including stylish **window shutters** and **radiator covers**. **Electric fireplace** in the living room, adding a cozy touch to your space. **Ample storage** - plenty of room to keep your home organised. **Gas central heating** **Private front garden** **Local Amenities & Transport Links:** Situated just a short distance from local **shops**, cafes, and convenience stores, ensuring you have everything you need right on your doorstep. **Excellent transport links** to **Glasgow City Centre**, with bus stops and **Carntyne Railway Station** nearby, making your commute quick and easy. **Close to parks and green spaces**, perfect for outdoor activities and leisurely walks. This delightful flat is perfect for those seeking a comfortable and well-located home in Glasgow. Don't miss out on the opportunity to make it yours! For more information or to arrange a viewing, please get in touch today! **Available now - Ready to move in!** Property Type: Flat Full Renting price: £950.00 Pricing Options: Fixed Price Tenure: 12 Council tax band: A EPC rating: C Measurement: 645.835 sq.ft. Outside Space: Front Garden Parking: On street Heating Type: Double Glazing, Gas Central Heating Possession of the property: Vacant -----



**Bed Room(s)**



**Bath Room(s)**



**Living Room(s)**

## FLOOR PLAN

Illustrations are for identification purposes only and are not to scale.  
All measurements are a maximum and include wardrobes and bay windows where applicable.

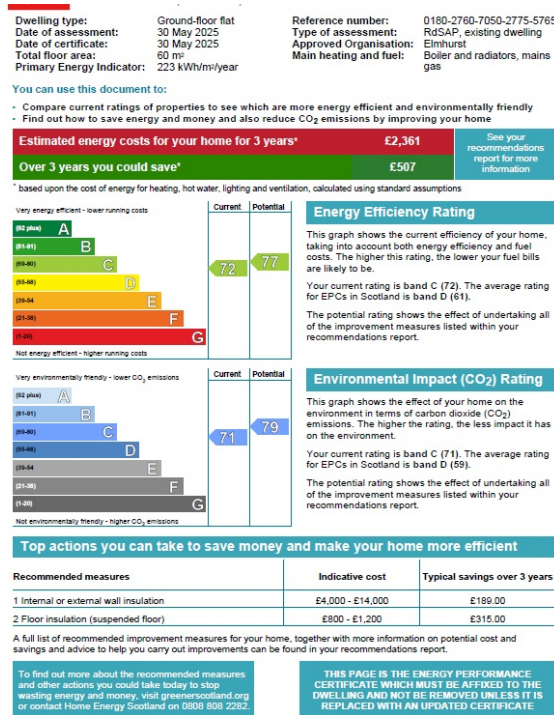


This plan is for layout guidance only and is not drawn to scale. Whilst every care is taken in the preparation of this plan, please check all dimension and shapes before making any decision reliant upon them. All room dimensions taken through cupboard/wardrobes to wall surface where possible or to surfaces indicated by arrow heads.

## EPC GRAPH

Illustrations are for identification purposes only and are not to scale.

All measurements are a maximum and include wardrobes and bay windows where applicable.



**Disclaimer:** The information displayed about this property comprises a property advertisement. 99home.co.uk (/) will not make no warranty for the accuracy or completeness of the advertisement or any linked or associated information, and 99home has no control over the content. This property advertisement does not constitute property particulars, the property may offer to tenants in same condition as they have seen on time of the viewing. The information is provided and maintained by 99home.co.uk (/)

