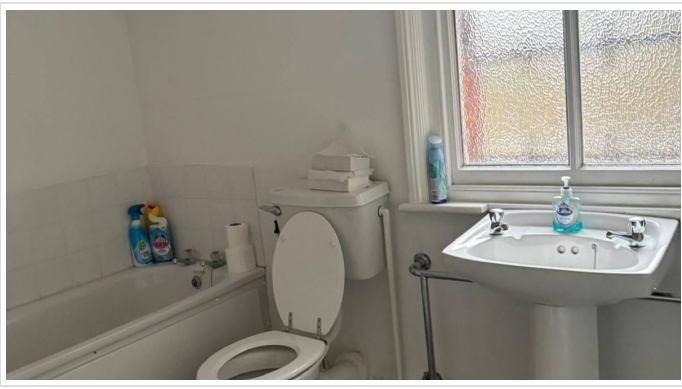


Office In Crewe Green Road , Crewe, CW1 5NW

£2,166 Monthly





SHORT DESCRIPTION

Property Ref: 16567 A stylish, self contained period office building. Comprising of 10 individual offices, gas heating, attractive gardened surrounds, courtyard area, courtyard buildings and basement area. There is parking available on the private road. The Mill House is very much a statement building. Gross internal area 3067.25sqft Courtyard Buildings 385sqft Basement 284sqft The Mill House is well located for access to the motorway network, Crewe Town Centre and Railway Station. The property is offered on a full repairing and insuring lease. Business rates - £6519per annum Property Type: Office Full Renting price: £2166.00 Pricing Options: No Status EPC rating:E Measurement: 3,736.25 sq.ft. -----



Bed Room(s)



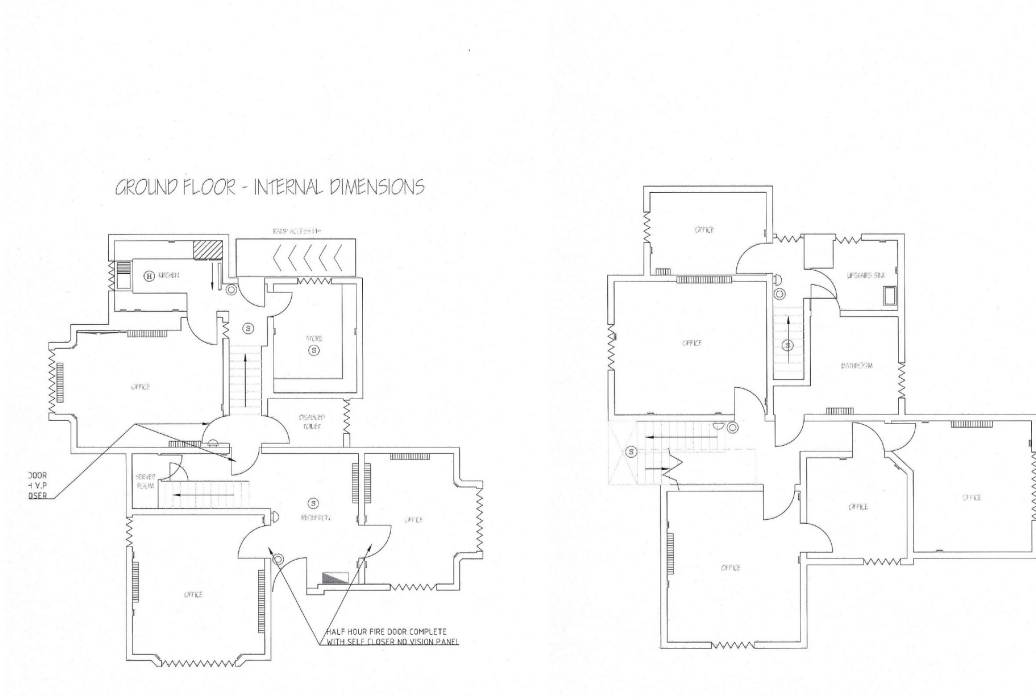
Bath Room(s)



Living Room(s)

FLOOR PLAN

Illustrations are for identification purposes only and are not to scale.
All measurements are a maximum and include wardrobes and bay windows where applicable.



EPC GRAPH

Illustrations are for identification purposes only and are not to scale.
All measurements are a maximum and include wardrobes and bay windows where applicable.



Disclaimer: The information displayed about this property comprises a property advertisement. 99home.co.uk (<http://www.99home.co.uk/>) will not make no warranty for the accuracy or completeness of the advertisement or any linked or associated information, and 99home has no control over the content. This property advertisement does not constitute property particulars, the property may offer to tenants in same condition as they have seen on time of the viewing. The information is provided and maintained by 99home.co.uk (<http://www.99home.co.uk/>)

Company registration number in England : 10469887 VAT: 263 3023 36
Copyright © 99Home Limited 2017. All rights reserved.