



**99Home Ltd.**

99Home Ltd,  
Sutton Business Centre,  
Restmor Way,  
Wallington,  
SM6 7AH,  
Phone :0203 5000 999  
Email  
:info@99home.co.uk

---

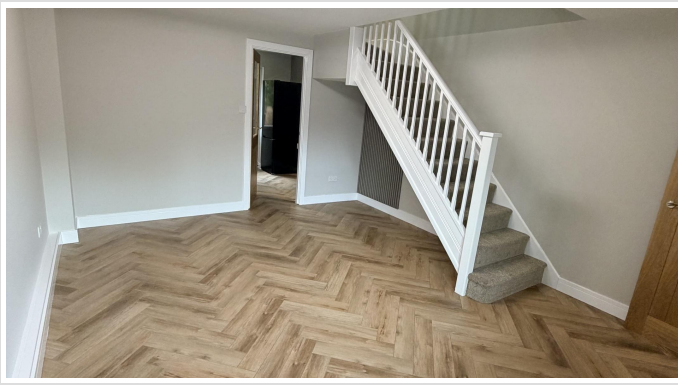
2 Bed End Of Terrace In Mariner Avenue Edgbaston, Birmingham, B16 9DF

£1,200 Monthly



Ref:16783





## **SHORT DESCRIPTION**

Property Ref: 16783 Modern and beautifully renovated throughout, this two double bedroom end terrace home is perfectly positioned on a quiet residential street, just moments from the scenic reservoir and a range of local amenities. The property offers stylish contemporary living with a bright and airy interior, featuring a newly fitted kitchen, bathroom and modern finishes throughout. The home would be ideal for professionals and couples alike. Externally, the property benefits from driveway parking for two cars and a large rear garden with a patio area, perfect for outdoor dining and entertaining. Located in a peaceful setting while remaining conveniently close to shops, schools, transport links, and scenic walking routes around the reservoir, this is a fantastic opportunity to rent a high-quality home in a desirable location. Property Type: End of Terrace Full Renting price: £1200.00 Pricing Options: Fixed Price Tenure: Long-term Council tax band: C EPC rating: D Measurement: 602.779 sq.ft. Outside Space: Patio Parking: Off-street Heating Type: Gas.

**2**

**Bed Room(s)**

**1**

**Bath Room(s)**

**1**

**Living Room(s)**

## **FLOOR PLAN**

Illustrations are for identification purposes only and are not to scale.  
All measurements are a maximum and include wardrobes and bay windows where applicable.

## **EPC GRAPH**

Illustrations are for identification purposes only and are not to scale.  
All measurements are a maximum and include wardrobes and bay windows where applicable.

Property type	End-terrace house
Total floor area	56 square metres

### Rules on letting this property

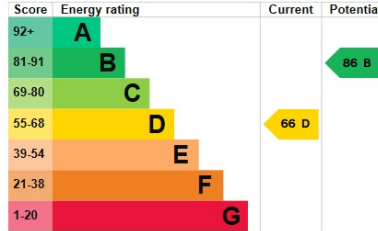
Properties can be let if they have an energy rating from A to E.

You can read [guidance for landlords on the regulations and exemptions](#).

### Energy rating and score

This property's energy rating is D. It has the potential to be B.

[See how to improve this property's energy efficiency.](#)



The graph shows this property's current and potential energy rating.

Properties get a rating from A (best) to G (worst) and a score. The better the rating and score, the lower your energy bills are likely to be.

For properties in England and Wales:

- the average energy rating is D
- the average energy score is 60

**Disclaimer:** The information displayed about this property comprises a property advertisement. 99home.co.uk (<http://www.99home.co.uk/>) will not make no warranty for the accuracy or completeness of the advertisement or any linked or associated information, and 99home has no control over the content. This property advertisement does not constitute property particulars, the property may offer to tenants in same condition as they have seen on time of the viewing. The information is provided and maintained by 99home.co.uk (<http://www.99home.co.uk/>)

Company registration number in England : 10469887 VAT: 263 3023 36  
 Copyright © 99Home Limited 2017. All rights reserved.