



**99Home Ltd.**  
99Home Ltd,  
Sutton Business Centre,  
Restmor Way,  
Wallington,  
SM6 7AH,  
Phone :0203 5000 999  
Email  
:info@99home.co.uk

## 2 Bed Apartment In Elderflower Drive Emersons Green, Bristol, BS16 7NJ

£94,000





## SHORT DESCRIPTION

Property Ref: 16826 A well-presented ground-floor two-bedroom flat located in the popular and modern Lyde Green development. This bright and spacious property offers comfortable contemporary living, featuring an open-plan kitchen and living area, two good-sized bedrooms, and a bathroom. The flat benefits from plenty of natural light throughout, modern fixtures and fittings, and ample storage space. Ideally suited for first-time buyers, professional couples, the property is conveniently located close to local amenities, schools, parks, with excellent transport links, including easy access to the A4174 ring road and Bristol city centre. Shared bike storage available Additional benefits include allocated parking and a well-maintained communal area. Property Type: Apartment Full selling price: £235000.00 Pricing Options: Shared ownership Tenure: Leasehold Percentage to be sold: 40% Share price: £94000.00 Monthly rent based on 40% share: £355.96 Remaining lease (In Years): 987 Yearly Ground Rent Cost: £0.00 Yearly Management Cost: £3436.80 Council tax band: B EPC rating: B Measurement: Bedrooms, Bathrooms and Living room Possession of the property: Occupied

2

Bed Room(s)

1

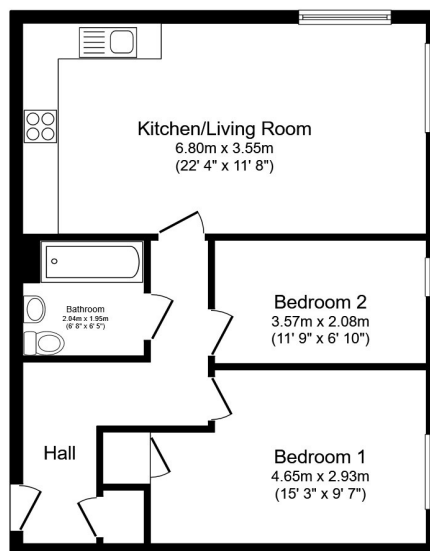
Bath Room(s)

1

Living Room(s)

## FLOOR PLAN

Illustrations are for identification purposes only and are not to scale. All measurements are a maximum and include wardrobes and bay windows where applicable.



Total floor area 59.6 sq.m. (641 sq.ft.) approx

This floor plan is for illustrative purposes only. It is not drawn to scale. Any measurements, floor areas (including any total floor area), openings and orientation are approximate. No details are guaranteed, they cannot be relied upon for any purpose and they do not form part of any agreement. No liability is taken for any error, omission or misstatement. A party must rely upon its own inspection(s). Powered by [www.focalagent.com](http://www.focalagent.com)

# EPC GRAPH

Illustrations are for identification purposes only and are not to scale.  
All measurements are a maximum and include wardrobes and bay windows where applicable.

Score	Energy rating	Current	Potential
92+	A		
81-91	B	83 B	83 B
69-80	C		
55-68	D		
39-54	E		
21-38	F		
1-20	G		

**Disclaimer:** The information displayed about this property comprises a property advertisement. 99home.co.uk (<http://www.99home.co.uk/>) will not make no warranty for the accuracy or completeness of the advertisement or any linked or associated information, and 99home has no control over the content. This property advertisement does not constitute property particulars, the property may offer to tenants in same condition as they have seen on time of the viewing. The information is provided and maintained by 99home.co.uk (<http://www.99home.co.uk/>)

Company registration number in England : 10469887 VAT: 263 3023 36  
Copyright © 99Home Limited 2017. All rights reserved.