



99Home Ltd.
99Home Ltd,
Sutton Business Centre,
Restmor Way,
Wallington,
SM6 7AH,
Phone :0203 5000 999
Email
:info@99home.co.uk

1 Bed Apartment In Isabella Apartments 102 Granville Road, Lewisham, SE13
7DU £87,500





SHORT DESCRIPTION

Property Ref: 16945 We are delighted to present this well-appointed one-bedroom apartment, ideally situated on the second floor of the contemporary Isabella Apartments development. Offering a stylish and convenient lifestyle, this modern home is an excellent opportunity for first-time buyers, professionals, or investors seeking a well-connected London residence. The property comprises a bright and spacious open-plan living and kitchen area, creating a versatile space perfect for both relaxing and entertaining. The modern fitted kitchen provides a practical and contemporary setting, while the generous double bedroom offers a comfortable retreat. The apartment is completed by a sleek and well-maintained bathroom, designed with modern fixtures and fittings. A standout feature of this apartment is the private balcony, providing valuable outdoor space and an ideal spot to enjoy fresh air or unwind after a busy day. Built circa 2017, Isabella Apartments is a contemporary purpose-built development set within a vibrant and highly desirable area. The apartment offers approximately 54 sq m of well-designed internal accommodation and is presented in good overall condition, providing a low-maintenance and comfortable home. The location benefits from excellent access to a wide range of local amenities, including nearby shops, cafés, supermarkets, and leisure facilities. Residents will also appreciate being close to gyms and excellent transport connections, including convenient access to the DLR, making commuting into Canary Wharf, the City, and Central London straightforward. This fantastic apartment combines modern living, excellent connectivity, and everyday convenience, making it a superb choice for those looking for a stylish home in a sought-after London location. Property Type: Apartment Full selling price: £350000.00 Pricing Options: Shared ownership Tenure: Leasehold Percentage to be sold: 25% Share price: £87500.00 Monthly rent based on 25% share: £601.56 Remaining lease (In Years): 125 Yearly Ground Rent Cost: £0.00 Yearly Management Cost: £2520.00 Council tax band: B EPC rating: B Measurement: Bedrooms, Bathrooms, and Living Room Possession of the property: Occupied



Bed Room(s)



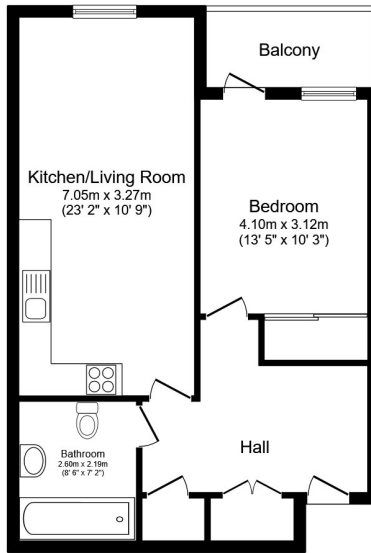
Bath Room(s)



Living Room(s)

FLOOR PLAN

Illustrations are for identification purposes only and are not to scale.
All measurements are a maximum and include wardrobes and bay windows where applicable.



Total floor area 57.1 sq.m. (615 sq.ft.) approx

This floor plan is for illustrative purposes only. It is not drawn to scale. Any measurements, floor areas (including any total floor area), openings and orientation are approximate. No details are guaranteed, they cannot be relied upon for any purpose and they do not form part of any agreement. No liability is taken for any error, omission or misstatement. A party must rely upon its own inspection(s). Powered by www.focalagent.com

EPC GRAPH

Illustrations are for identification purposes only and are not to scale.

All measurements are a maximum and include wardrobes and bay windows where applicable.

Score	Energy rating	Current	Potential
92+	A		
81-91	B	84 B	84 B
69-80	C		
55-68	D		
39-54	E		
21-38	F		
1-20	G		

Disclaimer: The information displayed about this property comprises a property advertisement. 99home.co.uk (<http://www.99home.co.uk/>) will not make no warranty for the accuracy or completeness of the advertisement or any linked or associated information, and 99home has no control over the content. This property advertisement does not constitute property particulars, the property may offer to tenants in same condition as they have seen on time of the viewing. The information is provided and maintained by 99home.co.uk (<http://www.99home.co.uk/>)

