

2 Bed Apartment In Kingswood Road London, London, SW2 4JL £2,400 Monthly





SHORT DESCRIPTION

Property Ref: 16973 Description We are delighted to present this beautiful two bedroom garden flat, set within an attractive period terrace on the sought after Kingswood Road. The property also benefits from having its own private entrance and low maintenance private rear garden patio area. Accommodation; Private entrance and hallway which leads to all the main rooms. There are two good size double bedrooms, both with wood floors, bathroom with a shower over the bath and a WC. Lounge kitchen diner. The private patio garden is accessed directly from living room, which provides a peaceful and low-maintenance outdoor retreat, ideal for al fresco dining or relaxing. The property is offered Unfurnished, Part Furnished or Fully Furnished to suit, and is available from 1st August 2026. GROUND FLOOR Hallway; Leading to all rooms, strip wood flooring, storage cupboard. Reception Room - Kitchen; 17ft 11 x 11ft 8. Strip wood flooring with patio doors opening on to private rear patio and garden area. The kitchen has a gas hob, electric oven, fridge freezer, and dishwasher. Bathroom; Character white suite, Washing machine Bedroom 1; 11ft 10 x 11ft 1. Strip wood flooring, fitted wardrobes Bedroom 2; 11ft 6 x 11ft 1. Strip wood flooring, fitted wardrobes Patio; Approx 19ft 3 x 11ft 6 Delightful south facing rear garden and patio, LOCATION; Kingswood Road is ideally located for access to local amenities, transport links, and green spaces. OTHER; Rent; £2,400.00. Deposit; £2,750.00. Furnished Available From; 1st August 2026 Floor Area; 660 Sq Ft Council Tax Band; C. EPC Rating; D. Lambeth Council. VIDEO TOUR AVAILABLE ON REQUEST MUST SEE OPPORTUNITY VIEWINGS BY APPOINTMENT



Bed Room(s)



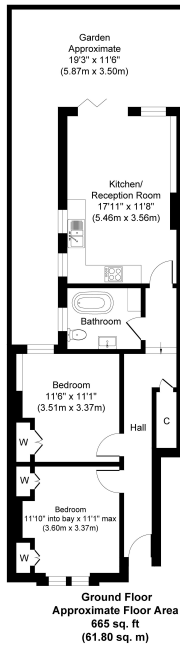
Bath Room(s)



Living Room(s)

FLOOR PLAN

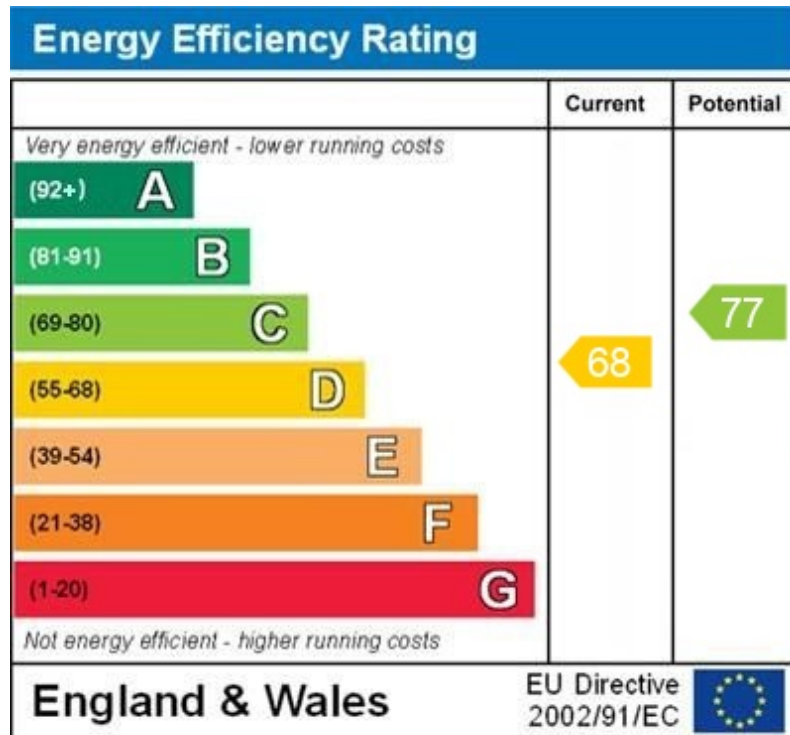
Illustrations are for identification purposes only and are not to scale.
All measurements are a maximum and include wardrobes and bay windows where applicable.



Whilst every attempt has been made to ensure the accuracy of the floor plan contained here, measurements of doors, windows, rooms and any other items are approximate and no responsibility is taken for any error, omission, or mis-statement. The measurements should not be relied upon for valuation, transaction and/or funding purposes. This plan is for illustrative purposes only and should be used as such by any prospective purchaser or tenant. The services, systems and appliances shown have not been tested and no guarantee as to their operability or efficiency can be given.
Copyright © 2008 Ltd 2008 | www.houseview.com

EPC GRAPH

Illustrations are for identification purposes only and are not to scale.
All measurements are a maximum and include wardrobes and bay windows where applicable.



WWW.EPC4U.COM

Disclaimer: The information displayed about this property comprises a property advertisement. 99home.co.uk (<http://www.99home.co.uk/>) will not make no warranty for the accuracy or completeness of the advertisement or any linked or associated information, and 99home has no control over the content. This property advertisement does not constitute property particulars, the property may offer to tenants in same condition as they have seen on time of the viewing. The information is provided and maintained by 99home.co.uk (<http://www.99home.co.uk/>)

