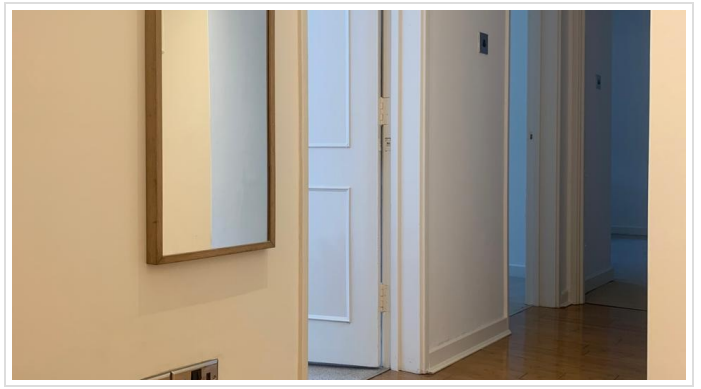


2 Bed Flat In French Apartments Lansdowne Road, Purley, CR8 2PH £1,950 Monthly





SHORT DESCRIPTION

Property Ref: 17034 We are proud to offer this delightful 2 bedroom, 1 bathroom flat in a great location. Available to move in immediately, this property offers several benefits hard to find: - concierge, secure entry and 24-7 CCTV surveillance, - Fully equipped kitchen including dish washer, fridge-freezer, microwave, stove-oven, washing machine and tumble dryer - private allocated covered parking, - covered bike storage rack - free gym access, rare to find anywhere - communal garden access. - The property also has rare advantage of its own private patio, perfect to enjoy morning breakfast or afternoon tea. - Residents can also book communal party room and barbeque area if want to host a larger gathering. - Property is offered furnished or unfurnished (tenant can decide). Viewing highly recommended. Contact today for more details or to arrange a viewing! Property Type: Flat Full Renting price: £1950.00+water charges £60 Pricing Options: Fixed Price Tenure: 12 months Council tax band: D EPC rating: D Measurement: 688.89 sq.ft. Outside Space: Patio Parking: Covered Heating Type: Electric Heating -----



Bed Room(s)



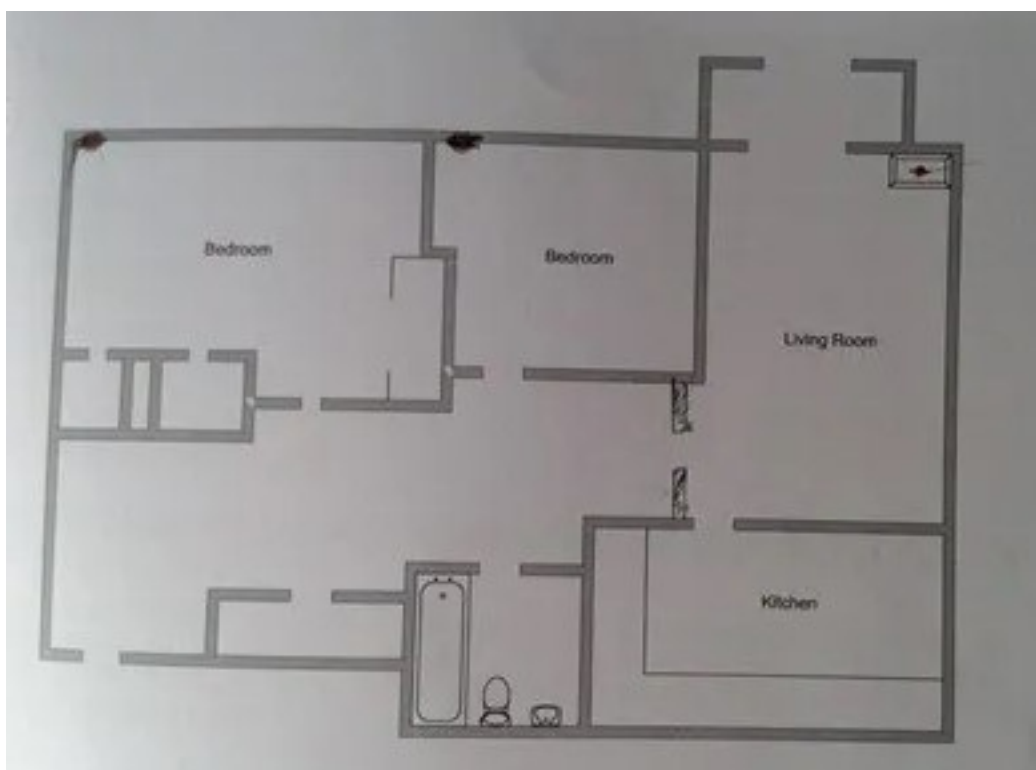
Bath Room(s)



Living Room(s)

FLOOR PLAN

Illustrations are for identification purposes only and are not to scale.
All measurements are a maximum and include wardrobes and bay windows where applicable.



EPC GRAPH

Illustrations are for identification purposes only and are not to scale.
All measurements are a maximum and include wardrobes and bay windows where applicable.

Valid until 23 June 2036	Certificate number 2343-3063-3206-9556-8200
-----------------------------	--

Property type	Ground-floor flat
Total floor area	64 square metres

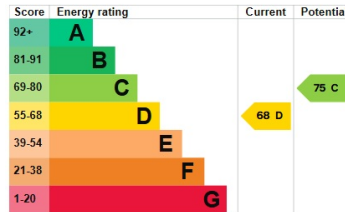
Rules on letting this property

Properties can be let if they have an energy rating from A to E.
You can read [guidance for landlords on the regulations and exemptions](#).

Energy rating and score

This property's energy rating is D. It has the potential to be C.

[See how to improve this property's energy efficiency.](#)



The graph shows this property's current and potential energy rating.

Properties get a rating from A (best) to G (worst) and a score. The better the rating and score, the lower your energy bills are likely to be.

For properties in England and Wales:

- the average energy rating is D
- the average energy score is 60

Disclaimer: The information displayed about this property comprises a property advertisement. 99home.co.uk (<http://www.99home.co.uk/>) will not make no warranty for the accuracy or completeness of the advertisement or any linked or associated information, and 99home has no control over the content. This property advertisement does not constitute property particulars, the property may offer to tenants in same condition as they have seen on time of the viewing. The information is provided and maintained by 99home.co.uk (<http://www.99home.co.uk/>)

Company registration number in England : 10469887 VAT: 263 3023 36
Copyright © 99Home Limited 2017. All rights reserved.