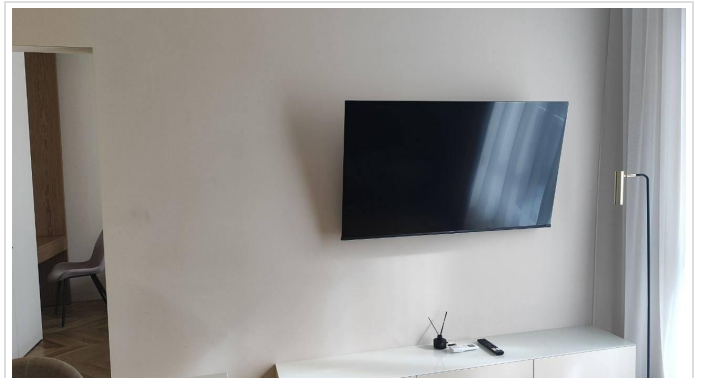
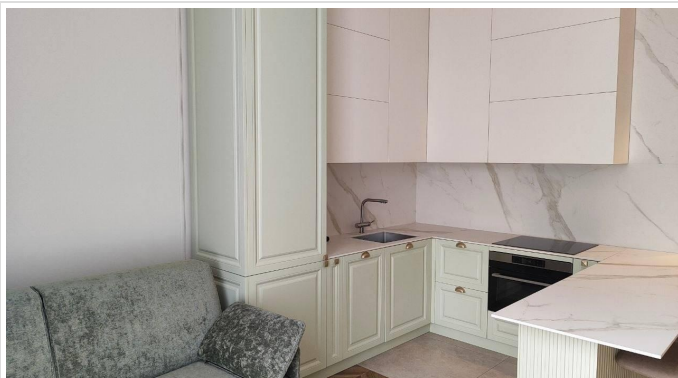
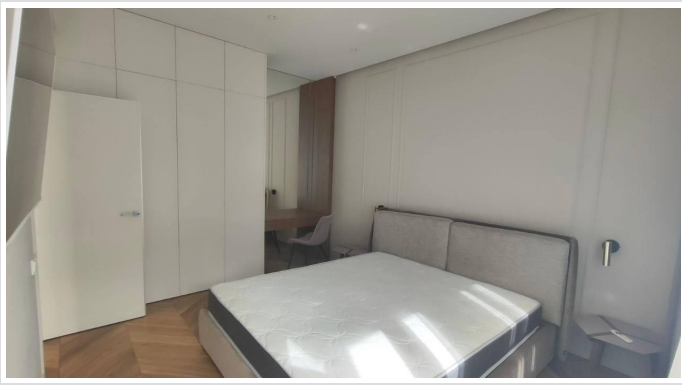


1 Bed Flat In 10 Wilfred Street , London, SW1E 6PL

£2,150 Monthly





SHORT DESCRIPTION

Property Ref: 17041 A cozy and well-maintained one-bedroom, one-bathroom flat situated in the heart of Westminster, Central London. This inviting property features a bright living area, a modern kitchen, and a comfortable bedroom, making it ideal for professionals or couples. Conveniently located near excellent transport links, local amenities, and some of London's most iconic landmarks, it offers comfortable city living in a highly desirable location. Property Type: Flat Full Renting price: £2150.00 Pricing Options: Fixed Price Tenure: Minimum 2 months Council tax band: C EPC rating: D Measurement: 204.514 sq.ft. Parking: Allocated Heating Type: Central



Bed Room(s)



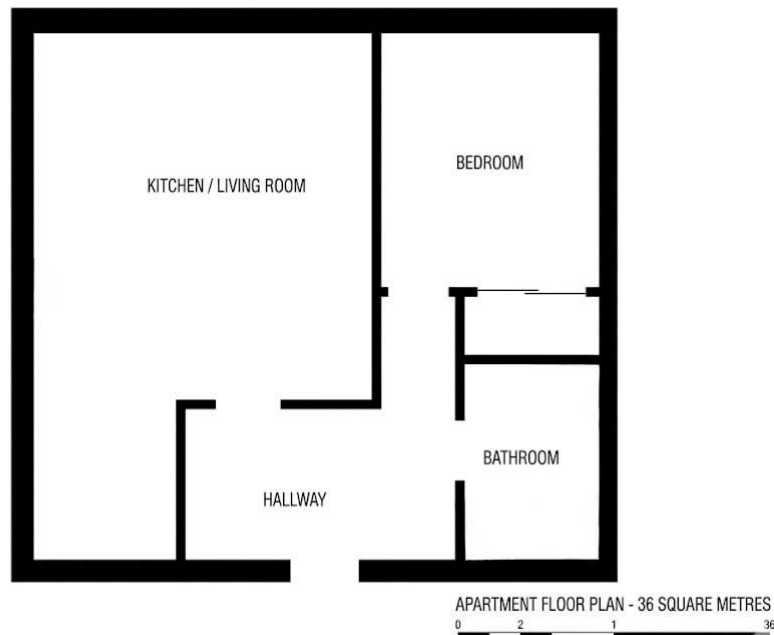
Bath Room(s)



Living Room(s)

FLOOR PLAN

Illustrations are for identification purposes only and are not to scale. All measurements are a maximum and include wardrobes and bay windows where applicable.



EPC GRAPH

Illustrations are for identification purposes only and are not to scale.
All measurements are a maximum and include wardrobes and bay windows where applicable.

Property type	Mid-floor flat
Total floor area	19 square metres

Rules on letting this property

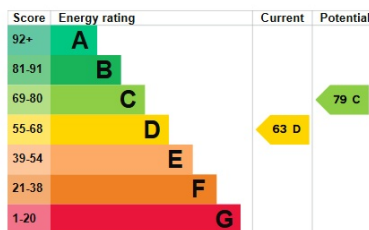
Properties can be let if they have an energy rating from A to E.

You can read [guidance for landlords on the regulations and exemptions](#).

Energy rating and score

This property's energy rating is D. It has the potential to be C.

[See how to improve this property's energy efficiency](#).



The graph shows this property's current and potential energy rating.

Properties get a rating from A (best) to G (worst) and a score. The better the rating and score, the lower your energy bills are likely to be.

For properties in England and Wales:

- the average energy rating is D
- the average energy score is 60

Disclaimer: The information displayed about this property comprises a property advertisement. 99home.co.uk (<http://www.99home.co.uk/>) will not make no warranty for the accuracy or completeness of the advertisement or any linked or associated information, and 99home has no control over the content. This property advertisement does not constitute property particulars, the property may offer to tenants in same condition as they have seen on time of the viewing. The information is provided and maintained by 99home.co.uk (<http://www.99home.co.uk/>)

Company registration number in England : 10469887 VAT: 263 3023 36
Copyright © 99Home Limited 2017. All rights reserved.