

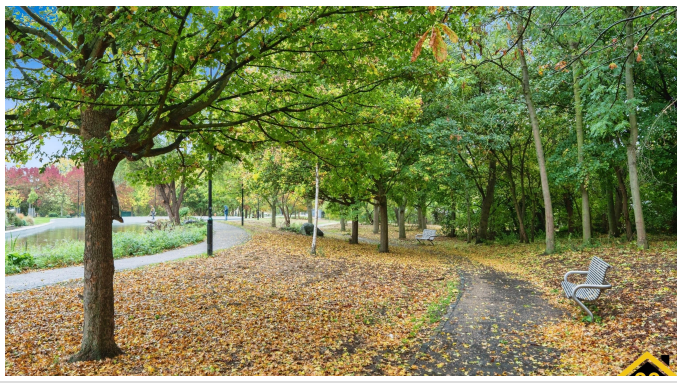


**99Home Ltd.**  
99Home Ltd,  
Sutton Business Centre,  
Restmor Way,  
Wallington,  
SM6 7AH,  
Phone :0203 5000 999  
Email  
:info@99home.co.uk

5 Bed Terraced In Grand Walk Mile End, London, E1 4PJ

£4,690 Monthly





## SHORT DESCRIPTION

Property Ref: 17060 4 BEDROOM house available+1 Study room ( FIVE ) Persons can stay in 4 bedrooms by paying extra rent .It is OPPOSITE QUEEN MARY UNIVERSITY 24 SQUARE METER open plan Kitchen It is 3-4 minutes walk from Mile End Underground Station, It also resides by the canal. 4 Bed rooms and 1 generous study room. It is newly Decorated . 5 PERSONS (1 couple + 3 Single Person) can stay BY paying £390 EXTRA RENT £5080 for 5 persons--- Extra study room- The living areas are large and spacious, and allow lots of light in. - The property comes fully furnished- It is ideally situated close to local amenities, shops and restaurants. - There is a large, easily maintained garden. - The kitchen comes complete with dining table, and there is a great deal of storage Property Type: Terraced Full Renting price: £4690.00 Pricing Options: Fixed Price Council tax band: E EPC rating:C Measurement: 1211 sq.ft. Outside Space: Front Garden, Rear Garden Parking: Allocated, Rear, Permit, Residents, On street Heating Type: Double Glazing, Gas Central Heating -----



**Bed Room(s)**



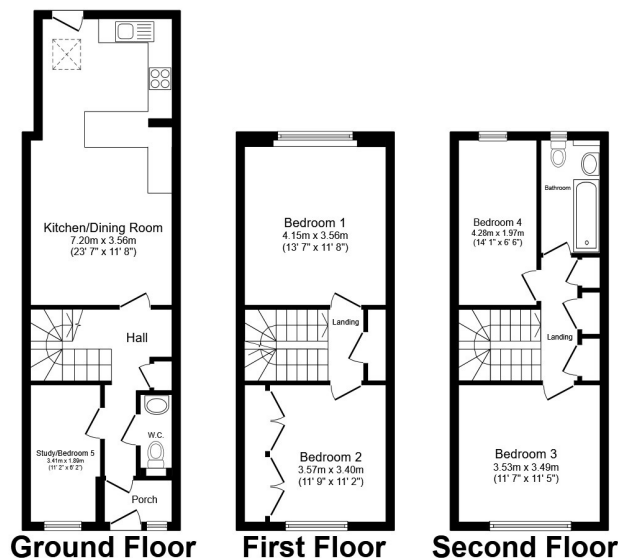
**Bath Room(s)**



**Living Room(s)**

## FLOOR PLAN

Illustrations are for identification purposes only and are not to scale.  
All measurements are a maximum and include wardrobes and bay windows where applicable.



Total floor area 112.5 sq.m. (1,211 sq.ft.) approx

This floor plan is for illustrative purposes only. It is not drawn to scale. Any measurements, floor areas (including any total floor area), openings and orientation are approximate. No details are guaranteed, they cannot be relied upon for any purpose and they do not form part of any agreement. No liability is taken for any error, omission or misstatement. A party must rely upon its own inspection(s). Powered by [www.focalagent.com](http://www.focalagent.com)

# EPC GRAPH

Illustrations are for identification purposes only and are not to scale.  
All measurements are a maximum and include wardrobes and bay windows where applicable.

This property's energy rating is C. It has the potential to be B.

[See how to improve this property's energy efficiency.](#)

Score	Energy rating	Current	Potential
92+	A		
81-91	B		85 B
69-80	C	70 C	
55-68	D		
39-54	E		
21-38	F		
1-20	G		

The graph shows this property's current and potential energy rating.

**Properties get a rating from A (best) to G (worst) and a score.** The better the rating and score, the lower your energy bills are likely to be.

---

**Disclaimer:** The information displayed about this property comprises a property advertisement. 99home.co.uk (<http://www.99home.co.uk/>) will not make no warranty for the accuracy or completeness of the advertisement or any linked or associated information, and 99home has no control over the content. This property advertisement does not constitute property particulars, the property may offer to tenants in same condition as they have seen on time of the viewing. The information is provided and maintained by 99home.co.uk (<http://www.99home.co.uk/>)

---

Company registration number in England : 10469887 VAT: 263 3023 36  
Copyright © 99Home Limited 2017. All rights reserved.