

2 Bed Flat In Brunswick Court Regency Street, London, SW1P 4AE £2,650 Monthly





SHORT DESCRIPTION

Property Ref: 17135 Nestled in the heart of Marylebone, this modern and cozy two-bedroom, two-bathroom apartment offers a perfect blend of comfort and contemporary style. Beautifully designed with bright, open living spaces and high-quality finishes, it's an ideal choice for both business and leisure stays. The spacious bedrooms and sleek bathrooms provide a relaxing retreat, while the fully equipped living area makes you feel right at home. Surrounded by Marylebone's renowned cafés, independent boutiques, and excellent transport links, this apartment is perfectly positioned to experience the very best of London. Property Type: Flat Full Renting price: £2650.00 Pricing Options: Fixed Price Council tax band: NA EPC rating: C Measurement: 828.821 sq.ft. Parking: On street Heating Type: Central -----

2

Bed Room(s)

2

Bath Room(s)

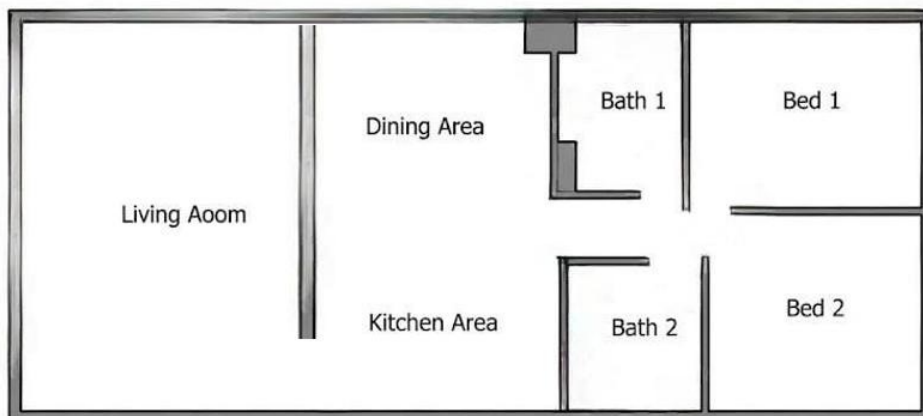
1

Living Room(s)

FLOOR PLAN

Illustrations are for identification purposes only and are not to scale.
All measurements are a maximum and include wardrobes and bay windows where applicable.

77 SQ M
APARTMENT FLOOR PLAN



EPC GRAPH

Illustrations are for identification purposes only and are not to scale.
All measurements are a maximum and include wardrobes and bay windows where applicable.

Valid until 8 January 2036	Certificate number 0350-2366-4590-2806-1715
-------------------------------	--

Property type	Ground-floor maisonette
Total floor area	77 square metres

Rules on letting this property

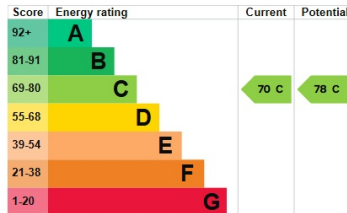
Properties can be let if they have an energy rating from A to E.

You can read [guidance for landlords on the regulations and exemptions](#).

Energy rating and score

This property's energy rating is C. It has the potential to be C.

[See how to improve this property's energy efficiency.](#)



The graph shows this property's current and potential energy rating.

Properties get a rating from A (best) to G (worst) and a score. The better the rating and score, the lower your energy bills are likely to be.

For properties in England and Wales:

- the average energy rating is D
- the average energy score is 60

Disclaimer: The information displayed about this property comprises a property advertisement. 99home.co.uk (<http://www.99home.co.uk/>) will not make no warranty for the accuracy or completeness of the advertisement or any linked or associated information, and 99home has no control over the content. This property advertisement does not constitute property particulars, the property may offer to tenants in same condition as they have seen on time of the viewing. The information is provided and maintained by 99home.co.uk (<http://www.99home.co.uk/>)

Company registration number in England : 10469887 VAT: 263 3023 36
Copyright © 99Home Limited 2017. All rights reserved.