



**99Home Ltd.**

99Home Ltd,  
Sutton Business Centre,  
Restmor Way,  
Wallington,  
SM6 7AH,  
Phone :0203 5000 999  
Email  
:info@99home.co.uk

---

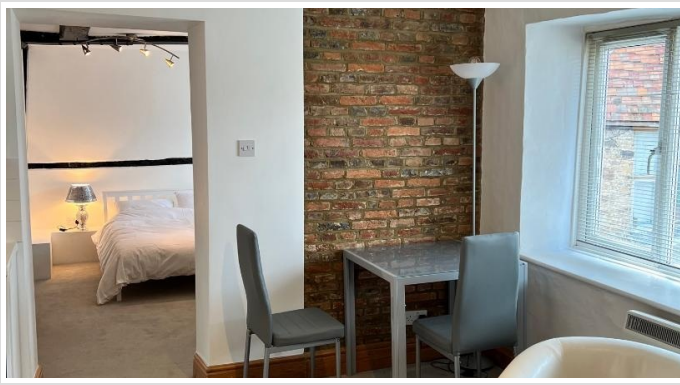
1 Bed Flat In Flat 2 High Street, Godalming, GU7 1DU

£1,150 Monthly



Ref: 8281





## SHORT DESCRIPTION

Property Ref: 8281 The George Inn A quiet and secluded fully furnished apartment in the heart of Godalming High Street, recently completely refurbished. Situated within the historic George Inn ;one of the oldest buildings in the town; the flat offers a wonderful sense of calm while remaining moments from all amenities. An ideal live-work unit with air conditioning and reverse-cycle heating throughout. Zero deposit Scheme. Property Type: Flat Full Renting price: £1150.00 Pricing Options: Fixed Price Tenure: 24 months Council tax band: C EPC rating: D Measurement:441.32 sq.ft. Parking: On street Heating Type: Air Conditioning Reverse Cycle Heating, -----

1

Bed Room(s)

1

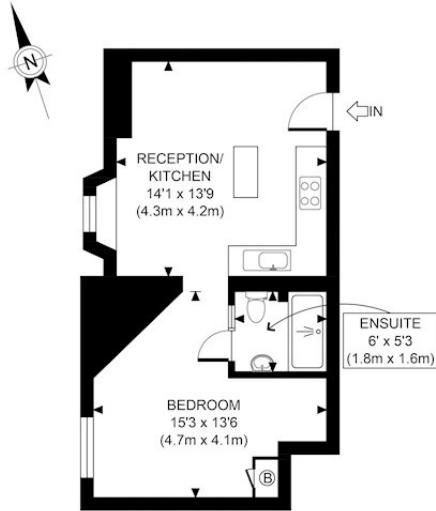
Bath Room(s)

1

Living Room(s)

## FLOOR PLAN

Illustrations are for identification purposes only and are not to scale.  
All measurements are a maximum and include wardrobes and bay windows where applicable.



FIRST FLOOR  
GROSS INTERNAL  
FLOOR AREA 407 SQ FT

## EPC GRAPH

Illustrations are for identification purposes only and are not to scale.  
All measurements are a maximum and include wardrobes and bay windows where applicable.

Property type	Top-floor flat
Total floor area	41 square metres

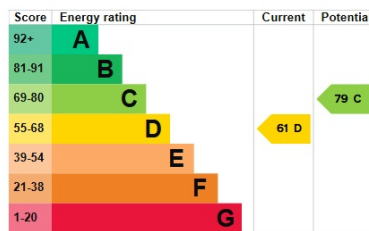
### Rules on letting this property

Properties can be let if they have an energy rating from A to E.  
You can read [guidance for landlords on the regulations and exemptions](#).

### Energy rating and score

This property's energy rating is D. It has the potential to be C.

[See how to improve this property's energy efficiency.](#)



The graph shows this property's current and potential energy rating.

Properties get a rating from A (best) to G (worst) and a score. The better the rating and score, the lower your energy bills are likely to be.

For properties in England and Wales:

- the average energy rating is D
- the average energy score is 60

**Disclaimer:** The information displayed about this property comprises a property advertisement. 99home.co.uk (<http://www.99home.co.uk/>) will not make no warranty for the accuracy or completeness of the advertisement or any linked or associated information, and 99home has no control over the content. This property advertisement does not constitute property particulars, the property may offer to tenants in same condition as they have seen on time of the viewing. The information is provided and maintained by 99home.co.uk (<http://www.99home.co.uk/>)

